

Sets are bulk shipped

Order SHIMS by individual piece or set

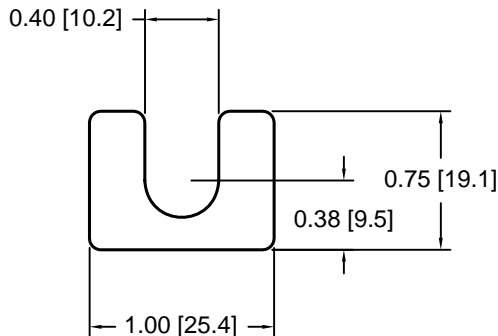
Drawings are not to scale

Metric shims over 0.25mm thick are black oxidized

Slots and holes are centered unless otherwise noted

DSCH001 Series - Individual Shims

DSC Part No.	Description	Thickness	Other part numbers
DSCH001-M025	Metric thickness shim	.25mm	FSD 34492-54
DSCH001-M050	Metric thickness shim	.50mm	FSD 34492-53
DSCH001-M100	Metric thickness shim	1.00mm	FSD 34492-52
DSCH001-M200	Metric thickness shim	2.00mm	FSD 34492-51
DSCH001-E015	Inch thickness shim	.015 inch	FSD 14180-54
DSCH001-E032	Inch thickness shim	.031 Inch	FSD 14180-52
DSCH001-E062	Inch thickness shim	.062 inch	FSD 14180-51

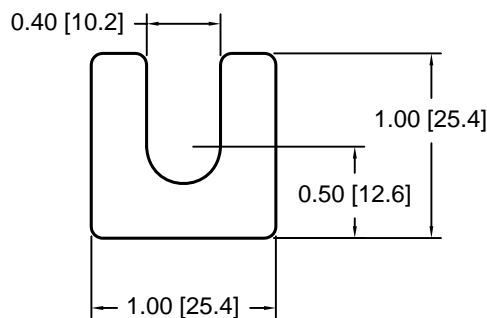


DSCH001 Series - Shim Sets

DSC Part No.	Description	Thickness	Set includes
DSCH001-M454	Four piece metric shim set	4.50mm	(1) 2.00mm, (2) 1.00mm, (1) .50mm
DSCH001-M505	Five piece metric shim set	5.00mm	(1) 2.00mm, (2) 1.00mm, (2) .50mm
DSCH001-M506	Six piece metric shim set	5.00mm	(1) 2.00mm, (2) 1.00mm, (1) .50mm, (2) .25mm
DSCH001-M507	Seven piece metric shim set	5.00mm	(1) 2.00mm, (1) 1.00mm, (3) .50mm, (2) .25mm
DSCH001-M605	Five piece metric shim set	6.00mm	(2) 2.00mm, (1) 1.00mm, (2) .50mm
DSCH001-E255	Five piece inch shim set	.250 inch	(3) .062 inch, (2) .031 Inch

DSCH002 Series - Individual Shims

DSC Part No.	Description	Thickness	Other part numbers
DSCH002-M025	Metric thickness shim	.25mm	FSD 34493-54, GSD-B-25
DSCH002-M050	Metric thickness shim	.50mm	FSD 34493-53, GSD-B-50
DSCH002-M100	Metric thickness shim	1.00mm	FSD 34493-52, GSD-B-1
DSCH002-M200	Metric thickness shim	2.00mm	FSD 34493-51, GSD-B-2
DSCH002-E015	Inch thickness shim	.015 inch	FSD 14181-54
DSCH002-E032	Inch thickness shim	.031 Inch	FSD 14181-52
DSCH002-E062	Inch thickness shim	.062 inch	FSD 14181-51

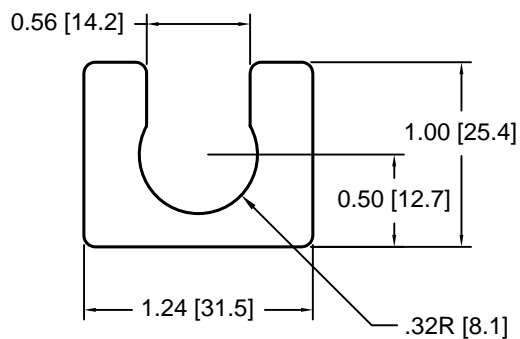


DSCH002 Series - Shim Sets

DSC Part No.	Description	Thickness	Set includes
DSCH002-M454	Four piece metric shim set	4.50mm	(1) 2.00mm, (2) 1.00mm, (1) .50mm
DSCH002-M505	Five piece metric shim set	5.00mm	(1) 2.00mm, (2) 1.00mm, (2) .50mm
DSCH002-M506	Six piece metric shim set	5.00mm	(1) 2.00mm, (2) 1.00mm, (1) .50mm, (2) .25mm
DSCH002-M507	Seven piece metric shim set	5.00mm	(1) 2.00mm, (1) 1.00mm, (3) .50mm, (2) .25mm
DSCH002-M605	Five piece metric shim set	6.00mm	(2) 2.00mm, (1) 1.00mm, (2) .50mm
DSCH002-E255	Five piece inch shim set	.250 inch	(3) .062 inch, (2) .031 Inch

DSCH003 Series - Individual Shims

DSC Part No.	Description	Thickness	Other part numbers
DSCH003-M025	Metric thickness shim	.25mm	FSD 34494-54
DSCH003-M050	Metric thickness shim	.50mm	FSD 34494-53
DSCH003-M100	Metric thickness shim	1.00mm	FSD 34494-52
DSCH003-M200	Metric thickness shim	2.00mm	FSD 34494-51
DSCH003-E015	Inch thickness shim	.015 inch	FSD 14129-54
DSCH003-E032	Inch thickness shim	.031 Inch	FSD 14129-52
DSCH003-E062	Inch thickness shim	.062 inch	FSD 14129-51

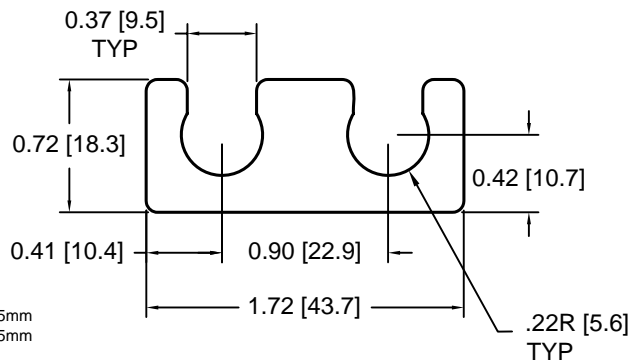


DSCH003 Series - Shim Sets

DSC Part No.	Description	Thickness	Set includes
DSCH003-M454	Four piece metric shim set	4.50mm	(1) 2.00mm, (2) 1.00mm, (1) .50mm
DSCH003-M505	Five piece metric shim set	5.00mm	(1) 2.00mm, (2) 1.00mm, (2) .50mm
DSCH003-M506	Six piece metric shim set	5.00mm	(1) 2.00mm, (2) 1.00mm, (1) .50mm, (2) .25mm
DSCH003-M507	Seven piece metric shim set	5.00mm	(1) 2.00mm, (1) 1.00mm, (3) .50mm, (2) .25mm
DSCH003-M605	Five piece metric shim set	6.00mm	(2) 2.00mm, (1) 1.00mm, (2) .50mm
DSCH003-E255	Five piece inch shim set	.250 inch	(3) .062 inch, (2) .031 Inch

DSCH004 Series - Individual Shims

DSC Part No.	Description	Thickness	Other part numbers
DSCH004-M025	Metric thickness shim	.25mm	FSD 34495-54
DSCH004-M050	Metric thickness shim	.50mm	FSD 34495-53
DSCH004-M100	Metric thickness shim	1.00mm	FSD 34495-52
DSCH004-M200	Metric thickness shim	2.00mm	FSD 34495-51
DSCH004-E015	Inch thickness shim	.015 inch	FSD 14050-54
DSCH004-E032	Inch thickness shim	.031 Inch	FSD 14050-52
DSCH004-E062	Inch thickness shim	.062 inch	FSD 14050-51



DSCH004 Series - Shim Sets

DSC Part No.	Description	Thickness	Set includes
DSCH004-M454	Four piece metric shim set	4.50mm	(1) 2.00mm, (2) 1.00mm, (1) .50mm
DSCH004-M505	Five piece metric shim set	5.00mm	(1) 2.00mm, (2) 1.00mm, (2) .50mm
DSCH004-M506	Six piece metric shim set	5.00mm	(1) 2.00mm, (2) 1.00mm, (1) .50mm, (2) .25mm
DSCH004-M507	Seven piece metric shim set	5.00mm	(1) 2.00mm, (1) 1.00mm, (3) .50mm, (2) .25mm
DSCH004-M605	Five piece metric shim set	6.00mm	(2) 2.00mm, (1) 1.00mm, (2) .50mm
DSCH004-E255	Five piece inch shim set	.250 inch	(3) .062 inch, (2) .031 Inch

Douglas Stamping Company (248) 542-3940 FAX (248) 542-6342

<http://dougstampco.com> sales@dougstampco.com