

Sets are bulk shipped

Order SHIMS by individual piece or set

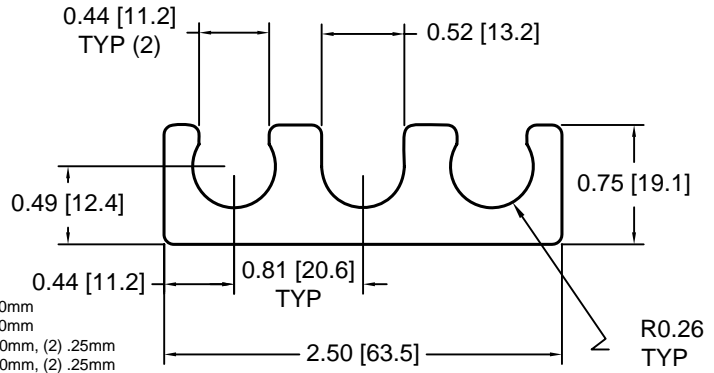
Drawings are not to scale

Metric shims over 0.25mm thick are black oxidized

Slots and holes are centered unless otherwise noted

**DSCH009 Series - Individual Shims**

DSC Part No.	Description	Thickness	Other part numbers
DSCH009-M025	Metric thickness shim	.25mm	FSD 34500-54
DSCH009-M050	Metric thickness shim	.50mm	FSD 34500-53
DSCH009-M100	Metric thickness shim	1.00mm	FSD 34500-52
DSCH009-M200	Metric thickness shim	2.00mm	FSD 34500-51
DSCH009-E015	Inch thickness shim	.015 inch	FSD 14056-54
DSCH009-E032	Inch thickness shim	.031 Inch	FSD 14056-52
DSCH009-E062	Inch thickness shim	.062 inch	FSD 14056-51

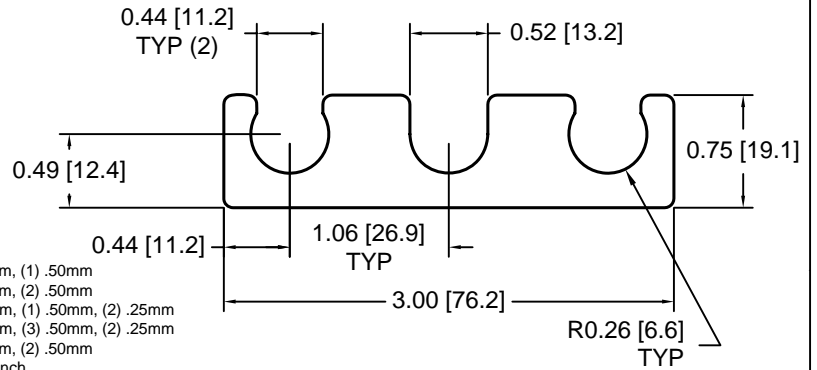


**DSCH009 Series - Shim Sets**

DSC Part No.	Description	Thickness	Set includes
DSCH009-M454	Four piece metric shim set	4.50mm	(1) 2.00mm, (2) 1.00mm, (1) .50mm
DSCH009-M505	Five piece metric shim set	5.00mm	(1) 2.00mm, (2) 1.00mm, (2) .50mm
DSCH009-M506	Six piece metric shim set	5.00mm	(1) 2.00mm, (2) 1.00mm, (1) .50mm, (2) .25mm
DSCH009-M507	Seven piece metric shim set	5.00mm	(1) 2.00mm, (1) 1.00mm, (3) .50mm, (2) .25mm
DSCH009-M605	Five piece metric shim set	6.00mm	(2) 2.00mm, (1) 1.00mm, (2) .50mm
DSCH009-E255	Five piece inch shim set	.250 inch	(3) .062 inch, (2) .031 Inch

**DSCH010 Series - Individual Shims**

DSC Part No.	Description	Thickness	Other part numbers
DSCH010-M025	Metric thickness shim	.25mm	FSD 34501-54
DSCH010-M050	Metric thickness shim	.50mm	FSD 34501-53
DSCH010-M100	Metric thickness shim	1.00mm	FSD 34501-52
DSCH010-M200	Metric thickness shim	2.00mm	FSD 34501-51
DSCH010-E015	Inch thickness shim	.015 inch	FSD 14058-54
DSCH010-E032	Inch thickness shim	.031 Inch	FSD 14058-52
DSCH010-E062	Inch thickness shim	.062 inch	FSD 14058-51

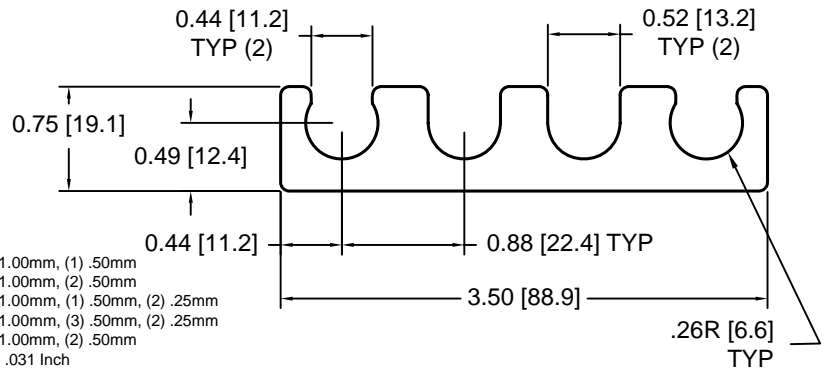


**DSCH010 Series - Shim Sets**

DSC Part No.	Description	Thickness	Set includes
DSCH010-M454	Four piece metric shim set	4.50mm	(1) 2.00mm, (2) 1.00mm, (1) .50mm
DSCH010-M505	Five piece metric shim set	5.00mm	(1) 2.00mm, (2) 1.00mm, (2) .50mm
DSCH010-M506	Six piece metric shim set	5.00mm	(1) 2.00mm, (2) 1.00mm, (1) .50mm, (2) .25mm
DSCH010-M507	Seven piece metric shim set	5.00mm	(1) 2.00mm, (1) 1.00mm, (3) .50mm, (2) .25mm
DSCH010-M605	Five piece metric shim set	6.00mm	(2) 2.00mm, (1) 1.00mm, (2) .50mm
DSCH010-E255	Five piece inch shim set	.250 inch	(3) .062 inch, (2) .031 Inch

**DSCH011 Series - Individual Shims**

DSC Part No.	Description	Thickness	Other part numbers
DSCH011-M025	Metric thickness shim	.25mm	FSD 34502-54
DSCH011-M050	Metric thickness shim	.50mm	FSD 34502-53
DSCH011-M100	Metric thickness shim	1.00mm	FSD 34502-52
DSCH011-M200	Metric thickness shim	2.00mm	FSD 34502-51
DSCH011-E015	Inch thickness shim	.015 inch	FSD 14059-54
DSCH011-E032	Inch thickness shim	.031 Inch	FSD 14059-52
DSCH011-E062	Inch thickness shim	.062 inch	FSD 14059-51

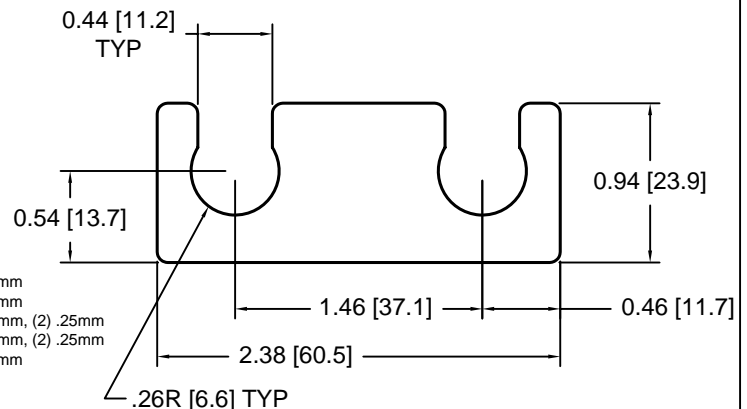


**DSCH011 Series - Shim Sets**

DSC Part No.	Description	Thickness	Set includes
DSCH011-M454	Four piece metric shim set	4.50mm	(1) 2.00mm, (2) 1.00mm, (1) .50mm
DSCH011-M505	Five piece metric shim set	5.00mm	(1) 2.00mm, (2) 1.00mm, (2) .50mm
DSCH011-M506	Six piece metric shim set	5.00mm	(1) 2.00mm, (2) 1.00mm, (1) .50mm, (2) .25mm
DSCH011-M507	Seven piece metric shim set	5.00mm	(1) 2.00mm, (1) 1.00mm, (3) .50mm, (2) .25mm
DSCH011-M605	Five piece metric shim set	6.00mm	(2) 2.00mm, (1) 1.00mm, (2) .50mm
DSCH011-E255	Five piece inch shim set	.250 inch	(3) .062 inch, (2) .031 Inch

**DSCH012 Series - Individual Shims**

DSC Part No.	Description	Thickness	Other part numbers
DSCH012-M025	Metric thickness shim	.25mm	FSD 34503-54
DSCH012-M050	Metric thickness shim	.50mm	FSD 34503-53
DSCH012-M100	Metric thickness shim	1.00mm	FSD 34503-52
DSCH012-M200	Metric thickness shim	2.00mm	FSD 34503-51
DSCH012-E015	Inch thickness shim	.015 inch	FSD 14052-54
DSCH012-E032	Inch thickness shim	.031 Inch	FSD 14052-52
DSCH012-E062	Inch thickness shim	.062 inch	FSD 14052-51



**DSCH012 Series - Shim Sets**

DSC Part No.	Description	Thickness	Set includes
DSCH012-M454	Four piece metric shim set	4.50mm	(1) 2.00mm, (2) 1.00mm, (1) .50mm
DSCH012-M505	Five piece metric shim set	5.00mm	(1) 2.00mm, (2) 1.00mm, (2) .50mm
DSCH012-M506	Six piece metric shim set	5.00mm	(1) 2.00mm, (2) 1.00mm, (1) .50mm, (2) .25mm
DSCH012-M507	Seven piece metric shim set	5.00mm	(1) 2.00mm, (1) 1.00mm, (3) .50mm, (2) .25mm
DSCH012-M605	Five piece metric shim set	6.00mm	(2) 2.00mm, (1) 1.00mm, (2) .50mm
DSCH012-E255	Five piece inch shim set	.250 inch	(3) .062 inch, (2) .031 Inch

Douglas Stamping Company (248) 542-3940 FAX (248) 542-6342

<http://dougstampco.com> [sales@dougstampco.com](mailto:sales@dougstampco.com)