

Sets are bulk shipped

Order SHIMS by individual piece or set

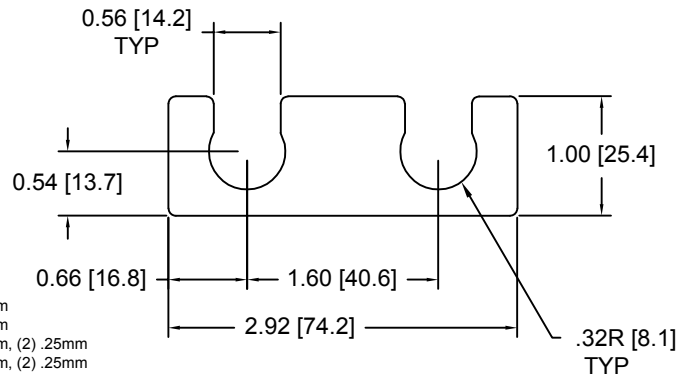
Drawings are not to scale

Metric shims over 0.25mm thick are black oxidized

Slots and holes are centered unless otherwise noted

DSCH013 Series - Individual Shims

DSC Part No.	Description	Thickness	Other part numbers
DSCH013-M025	Metric thickness shim	.25mm	FSD 34504-54
DSCH013-M050	Metric thickness shim	.50mm	FSD 34504-53
DSCH013-M100	Metric thickness shim	1.00mm	FSD 34504-52
DSCH013-M200	Metric thickness shim	2.00mm	FSD 34504-51
DSCH013-E015	Inch thickness shim	.015 inch	FSD 14053-54
DSCH013-E032	Inch thickness shim	.031 Inch	FSD 14053-52
DSCH013-E062	Inch thickness shim	.062 inch	FSD 14053-51

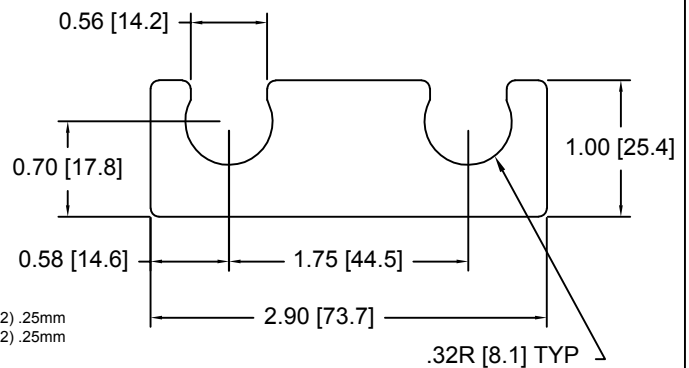


DSCH013 Series - Shim Sets

DSC Part No.	Description	Thickness	Set includes
DSCH013-M454	Four piece metric shim set	4.50mm	(1) 2.00mm, (2) 1.00mm, (1) .50mm
DSCH013-M505	Five piece metric shim set	5.00mm	(1) 2.00mm, (2) 1.00mm, (2) .50mm
DSCH013-M506	Six piece metric shim set	5.00mm	(1) 2.00mm, (2) 1.00mm, (1) .50mm, (2) .25mm
DSCH013-M507	Seven piece metric shim set	5.00mm	(1) 2.00mm, (1) 1.00mm, (3) .50mm, (2) .25mm
DSCH013-M605	Five piece metric shim set	6.00mm	(2) 2.00mm, (1) 1.00mm, (2) .50mm
DSCH013-E255	Five piece inch shim set	.250 inch	(3) .062 inch, (2) .031 Inch

DSCH014 Series - Individual Shims

DSC Part No.	Description	Thickness	Other part numbers
DSCH014-M025	Metric thickness shim	.25mm	FSD 34505-54
DSCH014-M050	Metric thickness shim	.50mm	FSD 34505-53
DSCH014-M100	Metric thickness shim	1.00mm	FSD 34505-52
DSCH014-M200	Metric thickness shim	2.00mm	FSD 34505-51
DSCH014-E015	Inch thickness shim	.015 inch	FSD 14068-54
DSCH014-E032	Inch thickness shim	.031 Inch	FSD 14068-52
DSCH014-E062	Inch thickness shim	.062 inch	FSD 14068-51

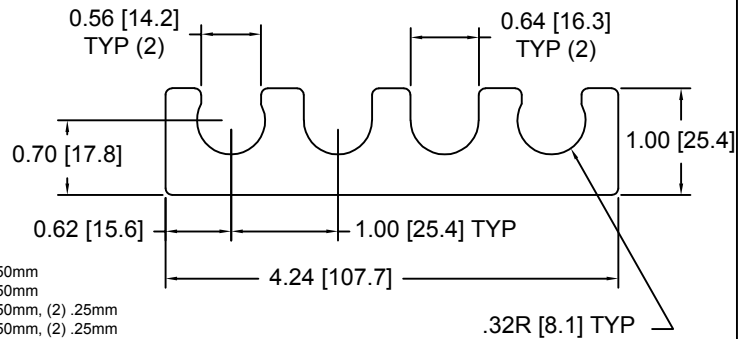


DSCH014 Series - Shim Sets

DSC Part No.	Description	Thickness	Set includes
DSCH014-M454	Four piece metric shim set	4.50mm	(1) 2.00mm, (2) 1.00mm, (1) .50mm
DSCH014-M505	Five piece metric shim set	5.00mm	(1) 2.00mm, (2) 1.00mm, (2) .50mm
DSCH014-M506	Six piece metric shim set	5.00mm	(1) 2.00mm, (2) 1.00mm, (1) .50mm, (2) .25mm
DSCH014-M507	Seven piece metric shim set	5.00mm	(1) 2.00mm, (1) 1.00mm, (3) .50mm, (2) .25mm
DSCH014-M605	Five piece metric shim set	6.00mm	(2) 2.00mm, (1) 1.00mm, (2) .50mm
DSCH014-E255	Five piece inch shim set	.250 inch	(3) .062 inch, (2) .031 Inch

DSCH015 Series - Individual Shims

DSC Part No.	Description	Thickness	Other part numbers
DSCH015-M025	Metric thickness shim	.25mm	FSD 34506-54
DSCH015-M050	Metric thickness shim	.50mm	FSD 34506-53
DSCH015-M100	Metric thickness shim	1.00mm	FSD 34506-52
DSCH015-M200	Metric thickness shim	2.00mm	FSD 34506-51
DSCH015-E015	Inch thickness shim	.015 inch	FSD 14202-54
DSCH015-E032	Inch thickness shim	.031 Inch	FSD 14202-52
DSCH015-E062	Inch thickness shim	.062 inch	FSD 14202-51

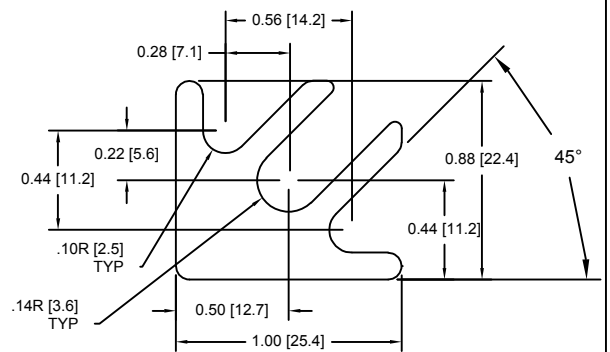


DSCH015 Series - Shim Sets

DSC Part No.	Description	Thickness	Set includes
DSCH015-M454	Four piece metric shim set	4.50mm	(1) 2.00mm, (2) 1.00mm, (1) .50mm
DSCH015-M505	Five piece metric shim set	5.00mm	(1) 2.00mm, (2) 1.00mm, (2) .50mm
DSCH015-M506	Six piece metric shim set	5.00mm	(1) 2.00mm, (2) 1.00mm, (1) .50mm, (2) .25mm
DSCH015-M507	Seven piece metric shim set	5.00mm	(1) 2.00mm, (1) 1.00mm, (3) .50mm, (2) .25mm
DSCH015-M605	Five piece metric shim set	6.00mm	(2) 2.00mm, (1) 1.00mm, (2) .50mm
DSCH015-E255	Five piece inch shim set	.250 inch	(3) .062 inch, (2) .031 Inch

DSCH016 Series - Individual Shims

DSC Part No.	Description	Thickness	Other part numbers
DSCH016-M025	Metric thickness shim	.25mm	FSD 34507-54
DSCH016-M050	Metric thickness shim	.50mm	FSD 34507-53
DSCH016-M100	Metric thickness shim	1.00mm	FSD 34507-52
DSCH016-M200	Metric thickness shim	2.00mm	FSD 34507-51
DSCH016-E015	Inch thickness shim	.015 inch	FSD 14190-54
DSCH016-E032	Inch thickness shim	.031 Inch	FSD 14190-52
DSCH016-E062	Inch thickness shim	.062 inch	FSD 14190-51



DSCH016 Series - Shim Sets

DSC Part No.	Description	Thickness	Set includes
DSCH016-M454	Four piece metric shim set	4.50mm	(1) 2.00mm, (2) 1.00mm, (1) .50mm
DSCH016-M505	Five piece metric shim set	5.00mm	(1) 2.00mm, (2) 1.00mm, (2) .50mm
DSCH016-M506	Six piece metric shim set	5.00mm	(1) 2.00mm, (2) 1.00mm, (1) .50mm, (2) .25mm
DSCH016-M507	Seven piece metric shim set	5.00mm	(1) 2.00mm, (1) 1.00mm, (3) .50mm, (2) .25mm
DSCH016-M605	Five piece metric shim set	6.00mm	(2) 2.00mm, (1) 1.00mm, (2) .50mm
DSCH016-E255	Five piece inch shim set	.250 inch	(3) .062 inch, (2) .031 Inch

Douglas Stamping Company (248) 542-3940 FAX (248) 542-6342

<http://dougstampco.com> sales@dougstampco.com