

Sets are bulk shipped

Order SHIMS by individual piece or set

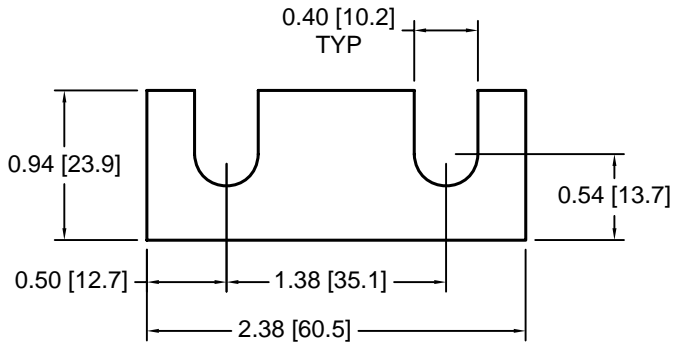
Drawings are not to scale

Metric shims over 0.25mm thick are black oxidized

Slots and holes are centered unless otherwise noted

**DSCH025 Series - Individual Shims**

DSC Part No.	Description	Thickness	Other part numbers
DSCH025-M025	Metric thickness shim	.25mm	FSD 40801-54
DSCH025-M050	Metric thickness shim	.50mm	FSD 40801-53
DSCH025-M100	Metric thickness shim	1.00mm	FSD 40801-52
DSCH025-M200	Metric thickness shim	2.00mm	FSD 40801-51

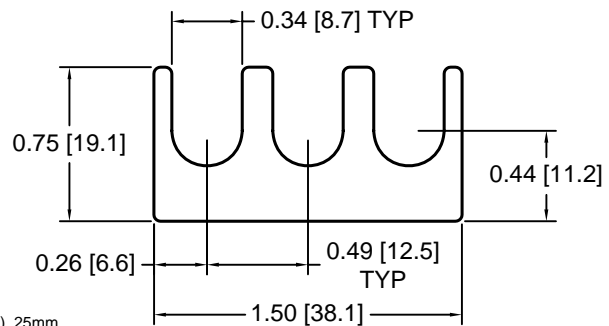


**DSCH025 Series - Shim Sets**

DSC Part No.	Description	Thickness	Set includes
DSCH025-M454	Four piece metric shim set	4.50mm	(1) 2.00mm, (2) 1.00mm, (1) .50mm
DSCH025-M505	Five piece metric shim set	5.00mm	(1) 2.00mm, (2) 1.00mm, (2) .50mm
DSCH025-M506	Six piece metric shim set	5.00mm	(1) 2.00mm, (2) 1.00mm, (1) .50mm, (2) .25mm
DSCH025-M507	Seven piece metric shim set	5.00mm	(1) 2.00mm, (1) 1.00mm, (3) .50mm, (2) .25mm
DSCH025-M605	Five piece metric shim set	6.00mm	(2) 2.00mm, (1) 1.00mm, (2) .50mm

**DSCH026 Series - Individual Shims**

DSC Part No.	Description	Thickness	Other part numbers
DSCH026-M025	Metric thickness shim	.25mm	FSD 40827-50
DSCH026-M050	Metric thickness shim	.50mm	FSD 40827-51
DSCH026-M100	Metric thickness shim	1.00mm	FSD 40827-52
DSCH026-M200	Metric thickness shim	2.00mm	FSD 40827-53

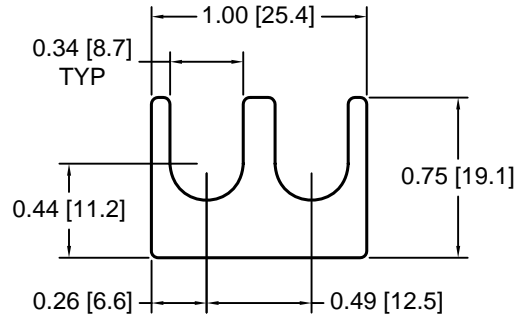


**DSCH026 Series - Shim Sets**

DSC Part No.	Description	Thickness	Set includes
DSCH026-M454	Four piece metric shim set	4.50mm	(1) 2.00mm, (2) 1.00mm, (1) .50mm
DSCH026-M505	Five piece metric shim set	5.00mm	(1) 2.00mm, (2) 1.00mm, (2) .50mm
DSCH026-M506	Six piece metric shim set	5.00mm	(1) 2.00mm, (2) 1.00mm, (1) .50mm, (2) .25mm
DSCH026-M507	Seven piece metric shim set	5.00mm	(1) 2.00mm, (1) 1.00mm, (3) .50mm, (2) .25mm
DSCH026-M605	Five piece metric shim set	6.00mm	(2) 2.00mm, (1) 1.00mm, (2) .50mm

**DSCH027 Series - Individual Shims**

DSC Part No.	Description	Thickness	Other part numbers
DSCH027-M025	Metric thickness shim	.25mm	FSD 40828-50
DSCH027-M050	Metric thickness shim	.50mm	FSD 40828-51
DSCH027-M100	Metric thickness shim	1.00mm	FSD 40828-52
DSCH027-M200	Metric thickness shim	2.00mm	FSD 40828-53

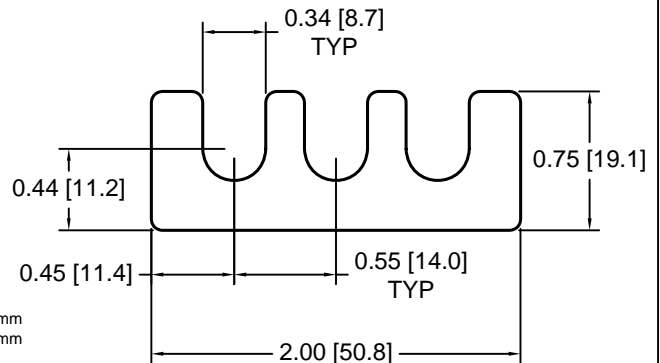


**DSCH027 Series - Shim Sets**

DSC Part No.	Description	Thickness	Set includes
DSCH027-M454	Four piece metric shim set	4.50mm	(1) 2.00mm, (2) 1.00mm, (1) .50mm
DSCH027-M505	Five piece metric shim set	5.00mm	(1) 2.00mm, (2) 1.00mm, (2) .50mm
DSCH027-M506	Six piece metric shim set	5.00mm	(1) 2.00mm, (2) 1.00mm, (1) .50mm, (2) .25mm
DSCH027-M507	Seven piece metric shim set	5.00mm	(1) 2.00mm, (1) 1.00mm, (3) .50mm, (2) .25mm
DSCH027-M605	Five piece metric shim set	6.00mm	(2) 2.00mm, (1) 1.00mm, (2) .50mm

**DSCH028 Series - Individual Shims**

DSC Part No.	Description	Thickness	Other part numbers
DSCH028-M025	Metric thickness shim	.25mm	FSD 40829-50
DSCH028-M050	Metric thickness shim	.50mm	FSD 40829-51
DSCH028-M100	Metric thickness shim	1.00mm	FSD 40829-52
DSCH028-M200	Metric thickness shim	2.00mm	FSD 40829-53



**DSCH028 Series - Shim Sets**

DSC Part No.	Description	Thickness	Set includes
DSCH028-M454	Four piece metric shim set	4.50mm	(1) 2.00mm, (2) 1.00mm, (1) .50mm
DSCH028-M505	Five piece metric shim set	5.00mm	(1) 2.00mm, (2) 1.00mm, (2) .50mm
DSCH028-M506	Six piece metric shim set	5.00mm	(1) 2.00mm, (2) 1.00mm, (1) .50mm, (2) .25mm
DSCH028-M507	Seven piece metric shim set	5.00mm	(1) 2.00mm, (1) 1.00mm, (3) .50mm, (2) .25mm
DSCH028-M605	Five piece metric shim set	6.00mm	(2) 2.00mm, (1) 1.00mm, (2) .50mm

Douglas Stamping Company (248) 542-3940 FAX (248) 542-6342

<http://dougstampco.com> [sales@dougstampco.com](mailto:sales@dougstampco.com)