

Sets are bulk shipped

Order SHIMS by individual piece or set

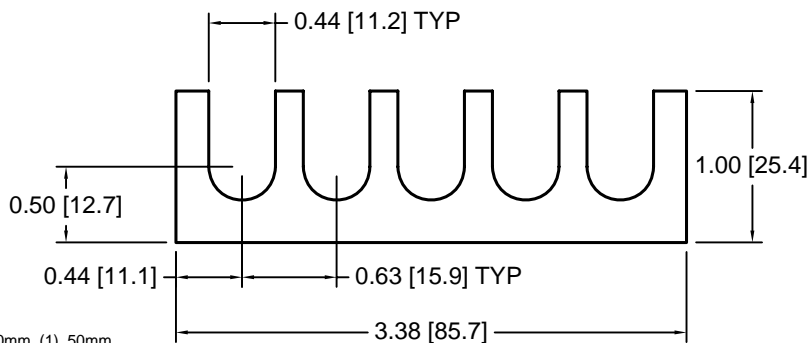
Drawings are not to scale

Unless noted, metric shims over 0.25mm thick are black oxidized

Slots and holes are centered unless otherwise noted

DSCH033 Series - Individual Shims

DSC Part No.	Description	Thickness	Other part numbers
DSCH033-M025	Metric thickness shim	.25mm	FSD 40895-54
DSCH033-M050	Metric thickness shim	.50mm	FSD 40895-53
DSCH033-M100	Metric thickness shim	1.00mm	FSD 40895-52
DSCH033-M200	Metric thickness shim	2.00mm	FSD 40895-51

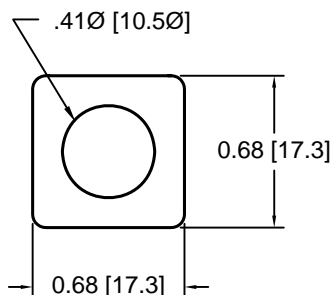


DSCH033 Series - Shim Sets

DSC Part No.	Description	Thickness	Set includes
DSCH033-M454	Four piece metric shim set	4.50mm	(1) 2.00mm, (2) 1.00mm, (1) .50mm
DSCH033-M505	Five piece metric shim set	5.00mm	(1) 2.00mm, (2) 1.00mm, (2) .50mm
DSCH033-M506	Six piece metric shim set	5.00mm	(1) 2.00mm, (2) 1.00mm, (1) .50mm, (2) .25mm
DSCH033-M507	Seven piece metric shim set	5.00mm	(1) 2.00mm, (1) 1.00mm, (3) .50mm, (2) .25mm
DSCH033-M605	Five piece metric shim set	6.00mm	(2) 2.00mm, (1) 1.00mm, (2) .50mm

DSCH034 Series - Individual Shims

DSC Part No.	Description	Thickness	Other part numbers
DSCH034-M025	Metric thickness shim	.25mm	FSD 41256-51
DSCH034-M050	Metric thickness shim	.50mm	FSD 41256-52
DSCH034-M100	Metric thickness shim	1.00mm	FSD 41256-53
DSCH034-M200	Metric thickness shim	2.00mm	FSD 41256-54

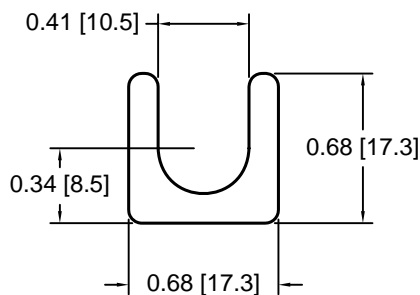


DSCH034 Series - Shim Sets

DSC Part No.	Description	Thickness	Set includes
DSCH034-M454	Four piece metric shim set	4.50mm	(1) 2.00mm, (2) 1.00mm, (1) .50mm
DSCH034-M505	Five piece metric shim set	5.00mm	(1) 2.00mm, (2) 1.00mm, (2) .50mm
DSCH034-M506	Six piece metric shim set	5.00mm	(1) 2.00mm, (2) 1.00mm, (1) .50mm, (2) .25mm
DSCH034-M507	Seven piece metric shim set	5.00mm	(1) 2.00mm, (1) 1.00mm, (3) .50mm, (2) .25mm
DSCH034-M605	Five piece metric shim set	6.00mm	(2) 2.00mm, (1) 1.00mm, (2) .50mm

DSCH035 Series - Individual Shims

DSC Part No.	Description	Thickness	Other part numbers
DSCH035-M025	Metric thickness shim	.25mm	FSD 41257-51
DSCH035-M050	Metric thickness shim	.50mm	FSD 41257-52
DSCH035-M100	Metric thickness shim	1.00mm	FSD 41257-53
DSCH035-M200	Metric thickness shim	2.00mm	FSD 41257-54



DSCH035 Series - Shim Sets

DSC Part No.	Description	Thickness	Set includes
DSCH035-M454	Four piece metric shim set	4.50mm	(1) 2.00mm, (2) 1.00mm, (1) .50mm
DSCH035-M505	Five piece metric shim set	5.00mm	(1) 2.00mm, (2) 1.00mm, (2) .50mm
DSCH035-M506	Six piece metric shim set	5.00mm	(1) 2.00mm, (2) 1.00mm, (1) .50mm, (2) .25mm
DSCH035-M507	Seven piece metric shim set	5.00mm	(1) 2.00mm, (1) 1.00mm, (3) .50mm, (2) .25mm
DSCH035-M605	Five piece metric shim set	6.00mm	(2) 2.00mm, (1) 1.00mm, (2) .50mm

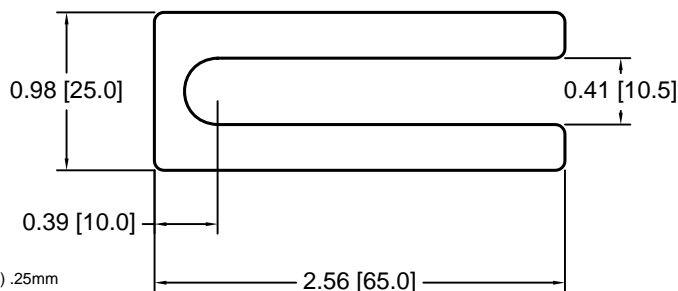
DSCH036 Series - Individual Shims

DSC Part No.	Description	Thickness	Other part numbers
DSCH036-M025	Metric thickness shim	.25mm	ASH102
DSCH036-M050	Metric thickness shim	.50mm	ASH105
DSCH036-M100	Metric thickness shim	1.00mm	ASH110
DSCH036-M200	Metric thickness shim	2.00mm	ASH120

*0.25mm and 2.00mm unfinished
0.50mm yellow dichromate
1.00mm black oxide*

DSCH036 Series - Shim Sets

DSC Part No.	Description	Thickness	Set includes
DSCH036-M454	Four piece metric shim set	4.50mm	(1) 2.00mm, (2) 1.00mm, (1) .50mm
DSCH036-M505	Five piece metric shim set	5.00mm	(1) 2.00mm, (2) 1.00mm, (2) .50mm
DSCH036-M506	Six piece metric shim set	5.00mm	(1) 2.00mm, (2) 1.00mm, (1) .50mm, (2) .25mm
DSCH036-M507	Seven piece metric shim set	5.00mm	(1) 2.00mm, (1) 1.00mm, (3) .50mm, (2) .25mm
DSCH036-M605	Five piece metric shim set	6.00mm	(2) 2.00mm, (1) 1.00mm, (2) .50mm



Douglas Stamping Company (248) 542-3940 FAX (248) 542-6342

<http://dougstampco.com> sales@dougstampco.com