

Sets are bulk shipped

Order SHIMS by individual piece or set

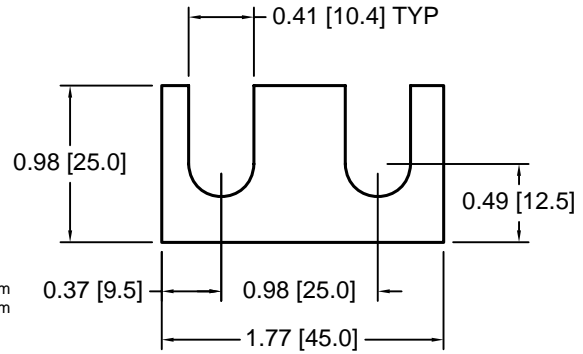
Drawings are not to scale

Metric shims over 0.25mm thick are black oxidized

Slots and holes are centered unless otherwise noted

**DSCH041 Series - Individual Shims**

DSC Part No.	Description	Thickness	Other part numbers
DSCH041-M025	Metric thickness shim	.25mm	56ZF28683-0
DSCH041-M050	Metric thickness shim	.50mm	56ZF28683-1
DSCH041-M100	Metric thickness shim	1.00mm	56ZF28683-2
DSCH041-M200	Metric thickness shim	2.00mm	56ZF28683-3

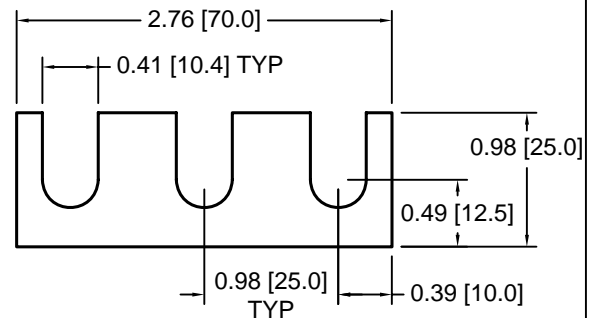


**DSCH041 Series - Shim Sets**

DSC Part No.	Description	Thickness	Set includes
DSCH041-M454	Four piece metric shim set	4.50mm	(1) 2.00mm, (2) 1.00mm, (1) .50mm
DSCH041-M505	Five piece metric shim set	5.00mm	(1) 2.00mm, (2) 1.00mm, (2) .50mm
DSCH041-M506	Six piece metric shim set	5.00mm	(1) 2.00mm, (2) 1.00mm, (1) .50mm, (2) .25mm
DSCH041-M507	Seven piece metric shim set	5.00mm	(1) 2.00mm, (1) 1.00mm, (3) .50mm, (2) .25mm
DSCH041-M605	Five piece metric shim set	6.00mm	(2) 2.00mm, (1) 1.00mm, (2) .50mm

**DSCH042 Series - Individual Shims**

DSC Part No.	Description	Thickness	Other part numbers
DSCH042-M025	Metric thickness shim	.25mm	56ZF28685-0
DSCH042-M050	Metric thickness shim	.50mm	56ZF28685-1
DSCH042-M100	Metric thickness shim	1.00mm	56ZF28685-2
DSCH042-M200	Metric thickness shim	2.00mm	56ZF28685-3

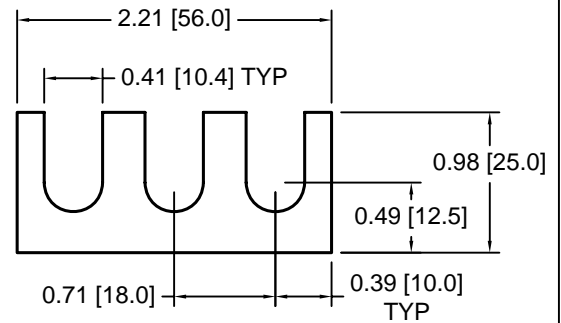


**DSCH042 Series - Shim Sets**

DSC Part No.	Description	Thickness	Set includes
DSCH042-M454	Four piece metric shim set	4.50mm	(1) 2.00mm, (2) 1.00mm, (1) .50mm
DSCH042-M505	Five piece metric shim set	5.00mm	(1) 2.00mm, (2) 1.00mm, (2) .50mm
DSCH042-M506	Six piece metric shim set	5.00mm	(1) 2.00mm, (2) 1.00mm, (1) .50mm, (2) .25mm
DSCH042-M507	Seven piece metric shim set	5.00mm	(1) 2.00mm, (1) 1.00mm, (3) .50mm, (2) .25mm
DSCH042-M605	Five piece metric shim set	6.00mm	(2) 2.00mm, (1) 1.00mm, (2) .50mm

**DSCH043 Series - Individual Shims**

DSC Part No.	Description	Thickness	Other part numbers
DSCH043-M025	Metric thickness shim	.25mm	56ZF28686-0
DSCH043-M050	Metric thickness shim	.50mm	56ZF28686-1
DSCH043-M100	Metric thickness shim	1.00mm	56ZF28686-2
DSCH043-M200	Metric thickness shim	2.00mm	56ZF28686-3



**DSCH043 Series - Shim Sets**

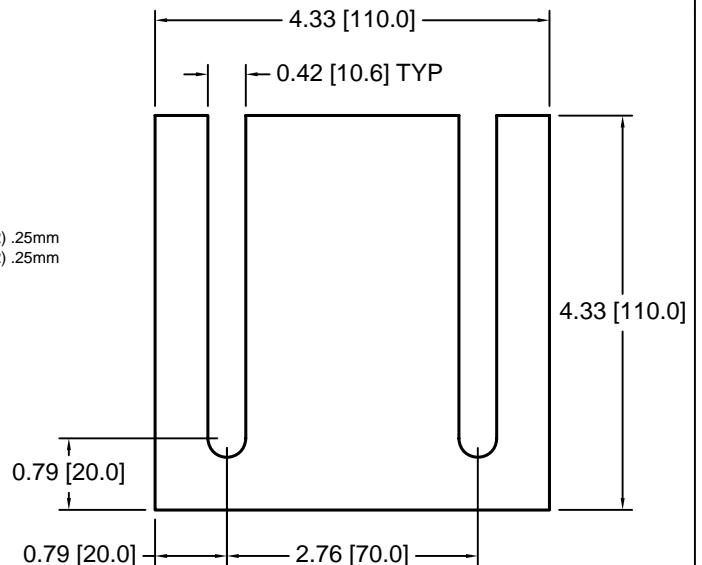
DSC Part No.	Description	Thickness	Set includes
DSCH043-M454	Four piece metric shim set	4.50mm	(1) 2.00mm, (2) 1.00mm, (1) .50mm
DSCH043-M505	Five piece metric shim set	5.00mm	(1) 2.00mm, (2) 1.00mm, (2) .50mm
DSCH043-M506	Six piece metric shim set	5.00mm	(1) 2.00mm, (2) 1.00mm, (1) .50mm, (2) .25mm
DSCH043-M507	Seven piece metric shim set	5.00mm	(1) 2.00mm, (1) 1.00mm, (3) .50mm, (2) .25mm
DSCH043-M605	Five piece metric shim set	6.00mm	(2) 2.00mm, (1) 1.00mm, (2) .50mm

**DSCH044 Series - Individual Shims**

DSC Part No.	Description	Thickness	Other part numbers
DSCH044-M025	Metric thickness shim	.25mm	ACH602
DSCH044-M050	Metric thickness shim	.50mm	ACH605
DSCH044-M100	Metric thickness shim	1.00mm	ACH610
DSCH044-M200	Metric thickness shim	2.00mm	ACH620

**DSCH044 Series - Shim Sets**

DSC Part No.	Description	Thickness	Set includes
DSCH044-M454	Four piece metric shim set	4.50mm	(1) 2.00mm, (2) 1.00mm, (1) .50mm
DSCH044-M505	Five piece metric shim set	5.00mm	(1) 2.00mm, (2) 1.00mm, (2) .50mm
DSCH044-M506	Six piece metric shim set	5.00mm	(1) 2.00mm, (2) 1.00mm, (1) .50mm, (2) .25mm
DSCH044-M507	Seven piece metric shim set	5.00mm	(1) 2.00mm, (1) 1.00mm, (3) .50mm, (2) .25mm
DSCH044-M605	Five piece metric shim set	6.00mm	(2) 2.00mm, (1) 1.00mm, (2) .50mm



Douglas Stamping Company (248) 542-3940 FAX (248) 542-6342

<http://dougstampco.com> [sales@dougstampco.com](mailto:sales@dougstampco.com)