

Sets are bulk shipped

**Order SHIMS by individual piece or set**

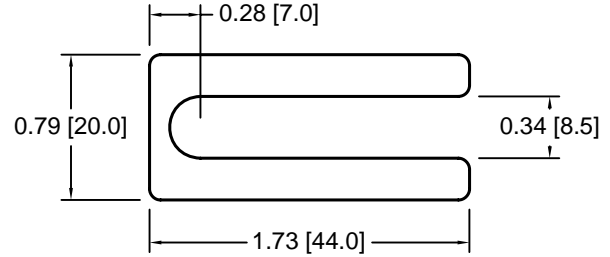
Drawings are not to scale

*Metric shims over 0.25mm thick are black oxidized*

*Slots and holes are centered unless otherwise noted*

**DSCH049 Series - Individual Shims**

DSC Part No.	Description	Thickness	Other part numbers
DSCH049-M025	Metric thickness shim	.25mm	DSC402S, ASH102N
DSCH049-M050	Metric thickness shim	.50mm	DSC405S, ASH105N
DSCH049-M100	Metric thickness shim	1.00mm	DSC410S, ASH110N
DSCH049-M200	Metric thickness shim	2.00mm	DSC420S, ASH120N

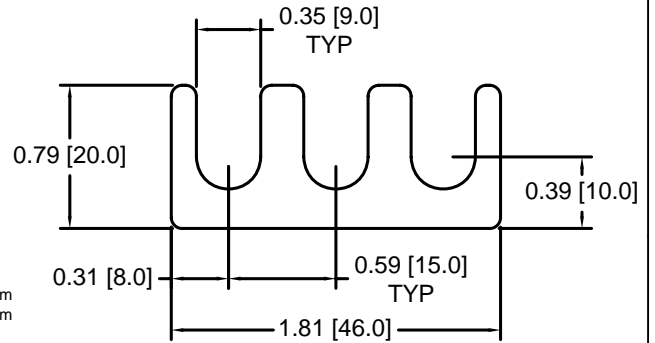


**DSCH049 Series - Shim Sets**

DSC Part No.	Description	Thickness	Set includes
DSCH049-M454	Four piece metric shim set	4.50mm	(1) 2.00mm, (2) 1.00mm, (1) .50mm
DSCH049-M505	Five piece metric shim set	5.00mm	(1) 2.00mm, (2) 1.00mm, (2) .50mm
DSCH049-M506	Six piece metric shim set	5.00mm	(1) 2.00mm, (2) 1.00mm, (1) .50mm, (2) .25mm
DSCH049-M507	Seven piece metric shim set	5.00mm	(1) 2.00mm, (1) 1.00mm, (3) .50mm, (2) .25mm
DSCH049-M605	Five piece metric shim set	6.00mm	(2) 2.00mm, (1) 1.00mm, (2) .50mm

**DSCH050 Series - Individual Shims**

DSC Part No.	Description	Thickness	Other part numbers
DSCH050-M025	Metric thickness shim	.25mm	ASH302N
DSCH050-M050	Metric thickness shim	.50mm	ASH305N
DSCH050-M100	Metric thickness shim	1.00mm	ASH310N
DSCH050-M200	Metric thickness shim	2.00mm	ASH320N

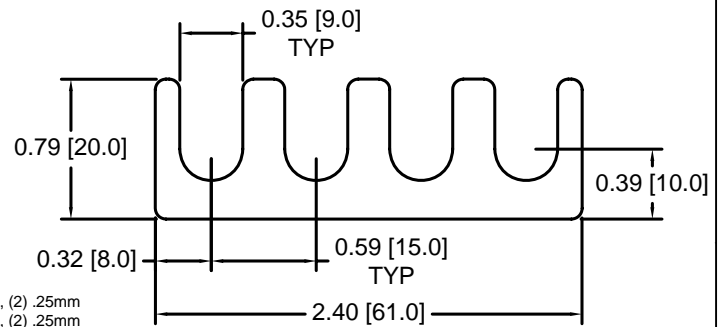


**DSCH050 Series - Shim Sets**

DSC Part No.	Description	Thickness	Set includes
DSCH050-M454	Four piece metric shim set	4.50mm	(1) 2.00mm, (2) 1.00mm, (1) .50mm
DSCH050-M505	Five piece metric shim set	5.00mm	(1) 2.00mm, (2) 1.00mm, (2) .50mm
DSCH050-M506	Six piece metric shim set	5.00mm	(1) 2.00mm, (2) 1.00mm, (1) .50mm, (2) .25mm
DSCH050-M507	Seven piece metric shim set	5.00mm	(1) 2.00mm, (1) 1.00mm, (3) .50mm, (2) .25mm
DSCH050-M605	Five piece metric shim set	6.00mm	(2) 2.00mm, (1) 1.00mm, (2) .50mm

**DSCH051 Series - Individual Shims**

DSC Part No.	Description	Thickness	Other part numbers
DSCH051-M025	Metric thickness shim	.25mm	ASH402N
DSCH051-M050	Metric thickness shim	.50mm	ASH405N
DSCH051-M100	Metric thickness shim	1.00mm	ASH410N
DSCH051-M200	Metric thickness shim	2.00mm	ASH420N

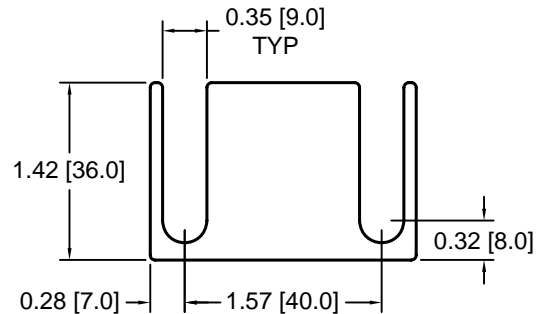


**DSCH051 Series - Shim Sets**

DSC Part No.	Description	Thickness	Set includes
DSCH051-M454	Four piece metric shim set	4.50mm	(1) 2.00mm, (2) 1.00mm, (1) .50mm
DSCH051-M505	Five piece metric shim set	5.00mm	(1) 2.00mm, (2) 1.00mm, (2) .50mm
DSCH051-M506	Six piece metric shim set	5.00mm	(1) 2.00mm, (2) 1.00mm, (1) .50mm, (2) .25mm
DSCH051-M507	Seven piece metric shim set	5.00mm	(1) 2.00mm, (1) 1.00mm, (3) .50mm, (2) .25mm
DSCH051-M605	Five piece metric shim set	6.00mm	(2) 2.00mm, (1) 1.00mm, (2) .50mm

**DSCH052 Series - Individual Shims**

DSC Part No.	Description	Thickness	Other part numbers
DSCH052-M025	Metric thickness shim	.25mm	DSC602S
DSCH052-M050	Metric thickness shim	.50mm	DSC605S
DSCH052-M100	Metric thickness shim	1.00mm	DSC610S
DSCH052-M200	Metric thickness shim	2.00mm	DSC620S



**DSCH052 Series - Shim Sets**

DSC Part No.	Description	Thickness	Set includes
DSCH052-M454	Four piece metric shim set	4.50mm	(1) 2.00mm, (2) 1.00mm, (1) .50mm
DSCH052-M505	Five piece metric shim set	5.00mm	(1) 2.00mm, (2) 1.00mm, (2) .50mm
DSCH052-M506	Six piece metric shim set	5.00mm	(1) 2.00mm, (2) 1.00mm, (1) .50mm, (2) .25mm
DSCH052-M507	Seven piece metric shim set	5.00mm	(1) 2.00mm, (1) 1.00mm, (3) .50mm, (2) .25mm
DSCH052-M605	Five piece metric shim set	6.00mm	(2) 2.00mm, (1) 1.00mm, (2) .50mm

Douglas Stamping Company (248) 542-3940 FAX (248) 542-6342

<http://dougstampco.com> [sales@dougstampco.com](mailto:sales@dougstampco.com)