

Sets are bulk shipped

Order SHIMS by individual piece or set

Drawings are not to scale

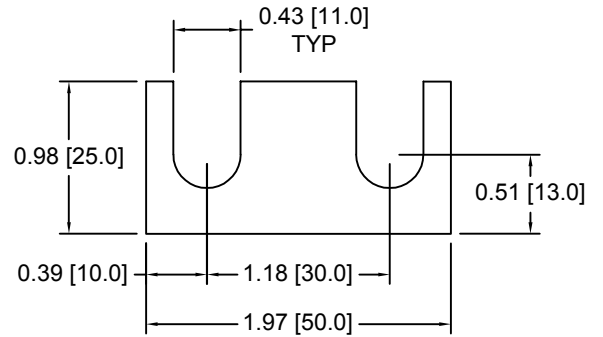
Metric shims over 0.25mm thick are black oxidized

Slots and holes are centered unless otherwise noted

**DSCH053 Series - Individual Shims**

**DSC Part No. Description Thickness Other part numbers**

DSCH053-M100..... Metric thickness shim..... 1.00mm..... DSC50081-1  
DSCH053-M200..... Metric thickness shim..... 2.00mm..... DSC50081-2



**DSCH053 Series - Shim Sets**

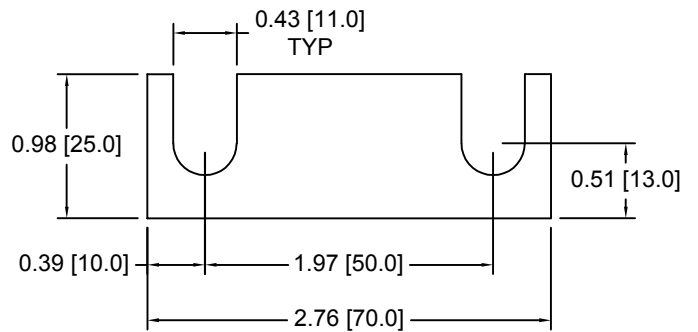
**DSC Part No. Description Thickness Set includes**

DSCH053-M503..... Three piece metric shim set.... 5.00mm..... (2) 2.00mm, (1) 1.00mm

**DSCH054 Series - Individual Shims**

**DSC Part No. Description Thickness Other part numbers**

DSCH054-M100..... Metric thickness shim..... 1.00mm..... DSC50082-1  
DSCH054-M200..... Metric thickness shim..... 2.00mm..... DSC50082-2



**DSCH054 Series - Shim Sets**

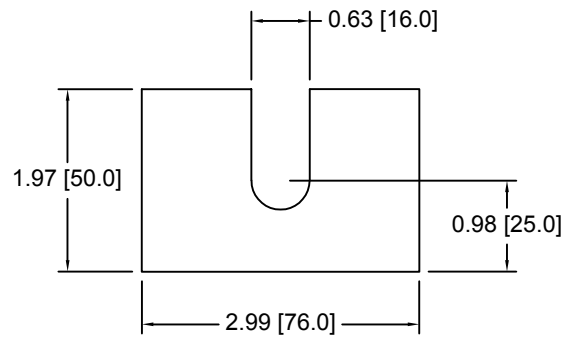
**DSC Part No. Description Thickness Set includes**

DSCH054-M503..... Three piece metric shim set.... 5.00mm..... (2) 2.00mm, (1) 1.00mm

**DSCH055 Series - Individual Shims**

**DSC Part No. Description Thickness Other part numbers**

DSCH055-M100..... Metric thickness shim..... 1.00mm..... DSC50083-1  
DSCH055-M200..... Metric thickness shim..... 2.00mm..... DSC50083-2



**DSCH055 Series - Shim Sets**

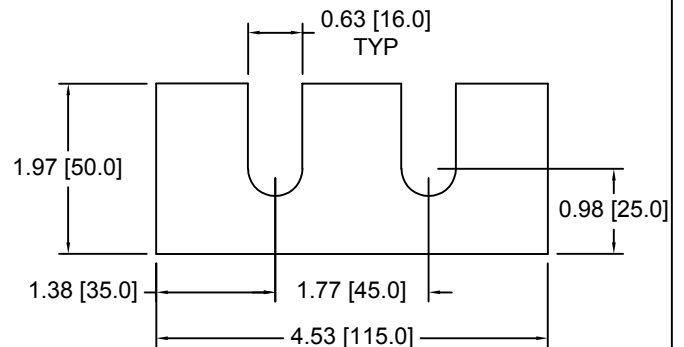
**DSC Part No. Description Thickness Set includes**

DSCH055-M503..... Three piece metric shim set.... 5.00mm..... (2) 2.00mm, (1) 1.00mm

**DSCH056 Series - Individual Shims**

**DSC Part No. Description Thickness Other part numbers**

DSCH056-M100..... Metric thickness shim..... 1.00mm..... DSC50084-1  
DSCH056-M200..... Metric thickness shim..... 2.00mm..... DSC50084-2



**DSCH056 Series - Shim Sets**

**DSC Part No. Description Thickness Set includes**

DSCH056-M503..... Three piece metric shim set.... 5.00mm..... (2) 2.00mm, (1) 1.00mm

Douglas Stamping Company (248) 542-3940 FAX (248) 542-6342

<http://dougstampco.com> [sales@dougstampco.com](mailto:sales@dougstampco.com)