

Sets are bulk shipped

Order SHIMS by individual piece or set

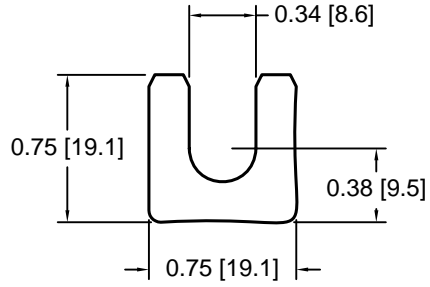
Drawings are not to scale

Metric shims over 0.25mm thick are black oxidized

Slots and holes are centered unless otherwise noted

DSC H057 Series - Individual Shims

DSC Part No.	Description	Thickness	Other part numbers
DSC H057-M025	Metric thickness shim.....	.25mm.....	GSD-A-25
DSC H057-M050	Metric thickness shim.....	.50mm.....	GSD-A-50
DSC H057-M100	Metric thickness shim.....	1.00mm.....	GSD-A-1
DSC H057-M200	Metric thickness shim.....	2.00mm.....	GSD-A-2

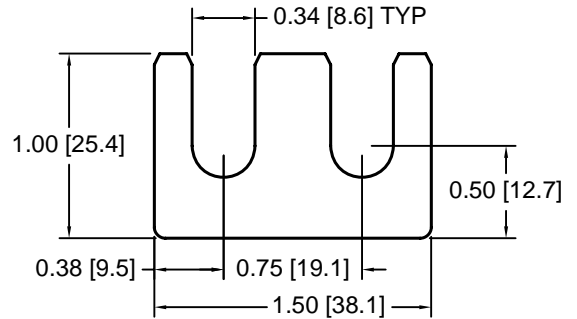


DSC H057 Series - Shim Sets

DSC Part No.	Description	Thickness	Set includes
DSC H057-M454	Four piece metric shim set.....	4.50mm.....	(1) 2.00mm, (2) 1.00mm, (1) .50mm
DSC H057-M505	Five piece metric shim set.....	5.00mm.....	(1) 2.00mm, (2) 1.00mm, (2) .50mm
DSC H057-M506	Six piece metric shim set.....	5.00mm.....	(1) 2.00mm, (2) 1.00mm, (1) .50mm, (2) .25mm
DSC H057-M507	Seven piece metric shim set.....	5.00mm.....	(1) 2.00mm, (1) 1.00mm, (3) .50mm, (2) .25mm
DSC H057-M605	Five piece metric shim set.....	6.00mm.....	(2) 2.00mm, (1) 1.00mm, (2) .50mm

DSC H058 Series - Individual Shims

DSC Part No.	Description	Thickness	Other part numbers
DSC H058-M025	Metric thickness shim.....	.25mm.....	GSD-C-25
DSC H058-M050	Metric thickness shim.....	.50mm.....	GSD-C-50
DSC H058-M100	Metric thickness shim.....	1.00mm.....	GSD-C-1
DSC H058-M200	Metric thickness shim.....	2.00mm.....	GSD-C-2

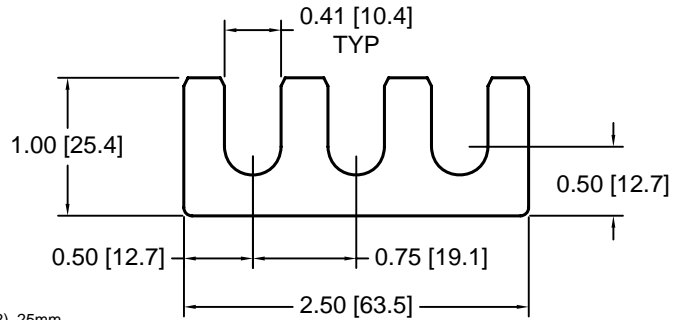


DSC H058 Series - Shim Sets

DSC Part No.	Description	Thickness	Set includes
DSC H058-M454	Four piece metric shim set.....	4.50mm.....	(1) 2.00mm, (2) 1.00mm, (1) .50mm
DSC H058-M505	Five piece metric shim set.....	5.00mm.....	(1) 2.00mm, (2) 1.00mm, (2) .50mm
DSC H058-M506	Six piece metric shim set.....	5.00mm.....	(1) 2.00mm, (2) 1.00mm, (1) .50mm, (2) .25mm
DSC H058-M507	Seven piece metric shim set.....	5.00mm.....	(1) 2.00mm, (1) 1.00mm, (3) .50mm, (2) .25mm
DSC H058-M605	Five piece metric shim set.....	6.00mm.....	(2) 2.00mm, (1) 1.00mm, (2) .50mm

DSC H059 Series - Individual Shims

DSC Part No.	Description	Thickness	Other part numbers
DSC H059-M025	Metric thickness shim.....	.25mm.....	GSD-E-25
DSC H059-M050	Metric thickness shim.....	.50mm.....	GSD-E-50
DSC H059-M100	Metric thickness shim.....	1.00mm.....	GSD-E-1
DSC H059-M200	Metric thickness shim.....	2.00mm.....	GSD-E-2

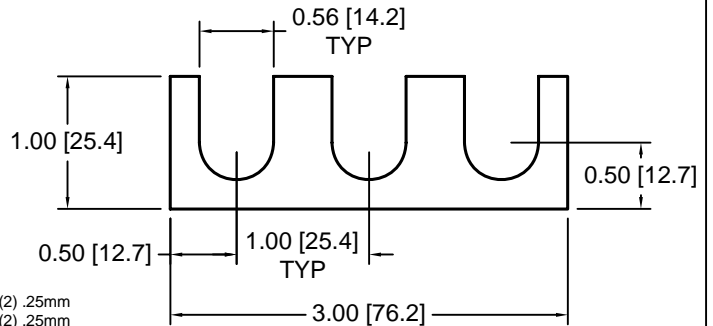


DSC H059 Series - Shim Sets

DSC Part No.	Description	Thickness	Set includes
DSC H059-M454	Four piece metric shim set.....	4.50mm.....	(1) 2.00mm, (2) 1.00mm, (1) .50mm
DSC H059-M505	Five piece metric shim set.....	5.00mm.....	(1) 2.00mm, (2) 1.00mm, (2) .50mm
DSC H059-M506	Six piece metric shim set.....	5.00mm.....	(1) 2.00mm, (2) 1.00mm, (1) .50mm, (2) .25mm
DSC H059-M507	Seven piece metric shim set.....	5.00mm.....	(1) 2.00mm, (1) 1.00mm, (3) .50mm, (2) .25mm
DSC H059-M605	Five piece metric shim set.....	6.00mm.....	(2) 2.00mm, (1) 1.00mm, (2) .50mm

DSC H060 Series - Individual Shims

DSC Part No.	Description	Thickness	Other part numbers
DSC H060-M025	Metric thickness shim.....	.25mm.....	GSD-F-25
DSC H060-M050	Metric thickness shim.....	.50mm.....	GSD-F-50
DSC H060-M100	Metric thickness shim.....	1.00mm.....	GSD-F-1
DSC H060-M200	Metric thickness shim.....	2.00mm.....	GSD-F-2



DSC H060 Series - Shim Sets

DSC Part No.	Description	Thickness	Set includes
DSC H060-M454	Four piece metric shim set.....	4.50mm.....	(1) 2.00mm, (2) 1.00mm, (1) .50mm
DSC H060-M505	Five piece metric shim set.....	5.00mm.....	(1) 2.00mm, (2) 1.00mm, (2) .50mm
DSC H060-M506	Six piece metric shim set.....	5.00mm.....	(1) 2.00mm, (2) 1.00mm, (1) .50mm, (2) .25mm
DSC H060-M507	Seven piece metric shim set.....	5.00mm.....	(1) 2.00mm, (1) 1.00mm, (3) .50mm, (2) .25mm
DSC H060-M605	Five piece metric shim set.....	6.00mm.....	(2) 2.00mm, (1) 1.00mm, (2) .50mm

Douglas Stamping Company (248) 542-3940 FAX (248) 542-6342

<http://dougstampco.com> sales@dougstampco.com