

Sets are bulk shipped

Order SHIMS by individual piece or set

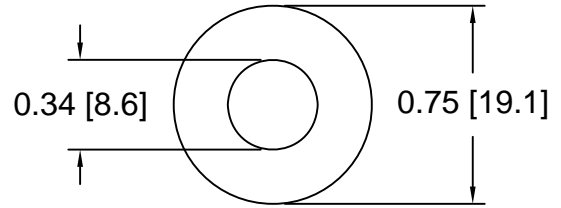
Drawings are not to scale

Metric shims over 0.25mm thick are black oxidized

Slots and holes are centered unless otherwise noted

DSCH063 Series - Individual Shims

DSC Part No.	Description	Thickness	Other part numbers
DSCH063-M025	Metric thickness shim	.25mm	M FS 15-AAAA
DSCH063-M050	Metric thickness shim	.50mm	M FS 15-AAA
DSCH063-M100	Metric thickness shim	1.00mm	M FS 15-AA
DSCH063-M200	Metric thickness shim	2.00mm	M FS 15-A
DSCH063-E015	Inch thickness shim	.015 inch	FS 15-AAA
DSCH063-E032	Inch thickness shim	.031 inch	FS 15-AA
DSCH063-E062	Inch thickness shim	.062 inch	FS 15-A

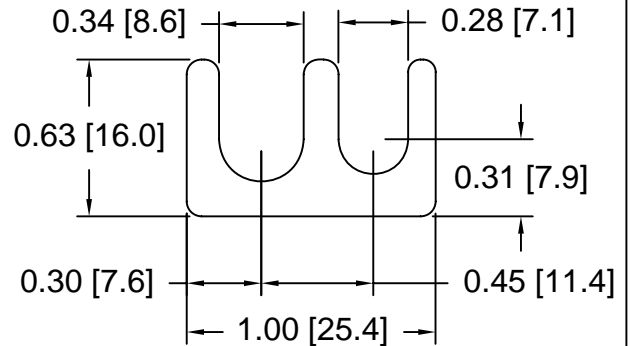


DSCH063 Series - Shim Sets

DSC Part No.	Description	Thickness	Set includes
DSCH063-M454	Four piece metric shim set	4.50mm	(1) 2.00mm, (2) 1.00mm, (1) .50mm
DSCH063-M505	Five piece metric shim set	5.00mm	(1) 2.00mm, (2) 1.00mm, (2) .50mm
DSCH063-M506	Six piece metric shim set	5.00mm	(1) 2.00mm, (2) 1.00mm, (1) .50mm, (2) .25mm
DSCH063-M507	Seven piece metric shim set	5.00mm	(1) 2.00mm, (1) 1.00mm, (3) .50mm, (2) .25mm
DSCH063-M605	Five piece metric shim set	6.00mm	(2) 2.00mm, (1) 1.00mm, (2) .50mm
DSCH063-E255	Five piece inch shim set	.250 inch	(3) .062 inch, (2) .031 inch

DSCH064 Series - Individual Shims

DSC Part No.	Description	Thickness	Other part numbers
DSCH064-M025	Metric thickness shim	.25mm	M FS 15-BBBB
DSCH064-M050	Metric thickness shim	.50mm	M FS 15-BBB
DSCH064-M100	Metric thickness shim	1.00mm	M FS 15-BB
DSCH064-M200	Metric thickness shim	2.00mm	M FS 15-B
DSCH064-E015	Inch thickness shim	.015 inch	FS 15-BBB
DSCH064-E032	Inch thickness shim	.031 inch	FS 15-BB
DSCH064-E062	Inch thickness shim	.062 inch	FS 15-B

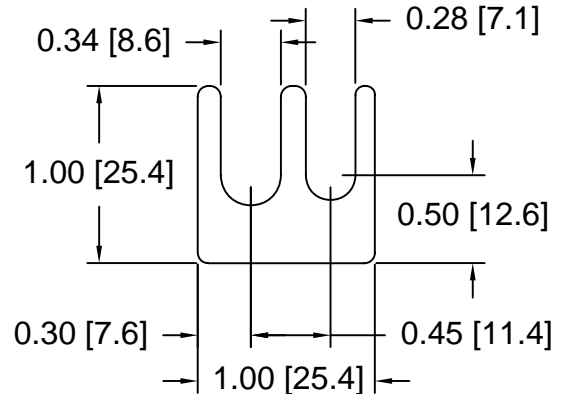


DSCH064 Series - Shim Sets

DSC Part No.	Description	Thickness	Set includes
DSCH064-M454	Four piece metric shim set	4.50mm	(1) 2.00mm, (2) 1.00mm, (1) .50mm
DSCH064-M505	Five piece metric shim set	5.00mm	(1) 2.00mm, (2) 1.00mm, (2) .50mm
DSCH064-M506	Six piece metric shim set	5.00mm	(1) 2.00mm, (2) 1.00mm, (1) .50mm, (2) .25mm
DSCH064-M507	Seven piece metric shim set	5.00mm	(1) 2.00mm, (1) 1.00mm, (3) .50mm, (2) .25mm
DSCH064-M605	Five piece metric shim set	6.00mm	(2) 2.00mm, (1) 1.00mm, (2) .50mm
DSCH064-E255	Five piece inch shim set	.250 inch	(3) .062 inch, (2) .031 inch

DSCH065 Series - Individual Shims

DSC Part No.	Description	Thickness	Other part numbers
DSCH065-M025	Metric thickness shim	.25mm	M FS 15-CCCC
DSCH065-M050	Metric thickness shim	.50mm	M FS 15-CCC
DSCH065-M100	Metric thickness shim	1.00mm	M FS 15-CC
DSCH065-M200	Metric thickness shim	2.00mm	M FS 15-C
DSCH065-E015	Inch thickness shim	.015 inch	FS 15-CCC
DSCH065-E032	Inch thickness shim	.031 inch	FS 15-CC
DSCH065-E062	Inch thickness shim	.062 inch	FS 15-C

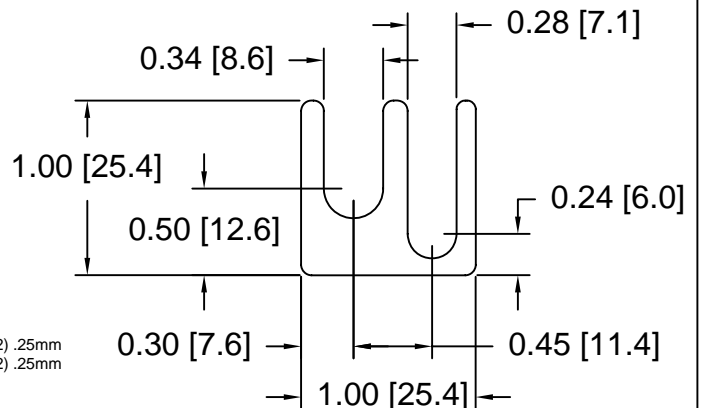


DSCH065 Series - Shim Sets

DSC Part No.	Description	Thickness	Set includes
DSCH065-M454	Four piece metric shim set	4.50mm	(1) 2.00mm, (2) 1.00mm, (1) .50mm
DSCH065-M505	Five piece metric shim set	5.00mm	(1) 2.00mm, (2) 1.00mm, (2) .50mm
DSCH065-M506	Six piece metric shim set	5.00mm	(1) 2.00mm, (2) 1.00mm, (1) .50mm, (2) .25mm
DSCH065-M507	Seven piece metric shim set	5.00mm	(1) 2.00mm, (1) 1.00mm, (3) .50mm, (2) .25mm
DSCH065-M605	Five piece metric shim set	6.00mm	(2) 2.00mm, (1) 1.00mm, (2) .50mm
DSCH065-E255	Five piece inch shim set	.250 inch	(3) .062 inch, (2) .031 inch

DSCH066 Series - Individual Shims

DSC Part No.	Description	Thickness	Other part numbers
DSCH066-M025	Metric thickness shim	.25mm	M FS 15-DDDD
DSCH066-M050	Metric thickness shim	.50mm	M FS 15-DDD
DSCH066-M100	Metric thickness shim	1.00mm	M FS 15-DD
DSCH066-M200	Metric thickness shim	2.00mm	M FS 15-D
DSCH066-E015	Inch thickness shim	.015 inch	FS 15-DDD
DSCH066-E032	Inch thickness shim	.031 inch	FS 15-DD
DSCH066-E062	Inch thickness shim	.062 inch	FS 15-D



DSCH066 Series - Shim Sets

DSC Part No.	Description	Thickness	Set includes
DSCH066-M454	Four piece metric shim set	4.50mm	(1) 2.00mm, (2) 1.00mm, (1) .50mm
DSCH066-M505	Five piece metric shim set	5.00mm	(1) 2.00mm, (2) 1.00mm, (2) .50mm
DSCH066-M506	Six piece metric shim set	5.00mm	(1) 2.00mm, (2) 1.00mm, (1) .50mm, (2) .25mm
DSCH066-M507	Seven piece metric shim set	5.00mm	(1) 2.00mm, (1) 1.00mm, (3) .50mm, (2) .25mm
DSCH066-M605	Five piece metric shim set	6.00mm	(2) 2.00mm, (1) 1.00mm, (2) .50mm
DSCH066-E255	Five piece inch shim set	.250 inch	(3) .062 inch, (2) .031 inch

Douglas Stamping Company (248) 542-3940 FAX (248) 542-6342

http://dougstampco.com sales@dougstampco.com