

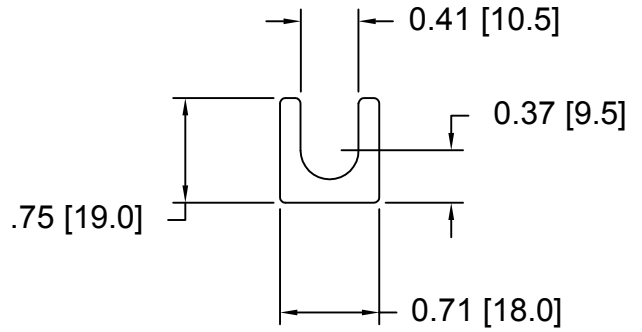
Shims

Drawings are not to scale

Sets are bulk shipped Slots and holes are centered unless otherwise noted
Most spacers are etched on the side with thickness

DSCH119 Series Shims

DSC Part No.	Thickness	Other part numbers
DSCH119-M025	0.25MM	TYPE 1-T025, DSC1918-51
DSCH119-M050	0.50MM	TYPE 1-T050, DSC1918-52
DSCH119-M100	1.00MM	TYPE 1-T100, DSC1918-53
DSCH119-M200	2.00MM	TYPE 1-T200, DSC1918-54

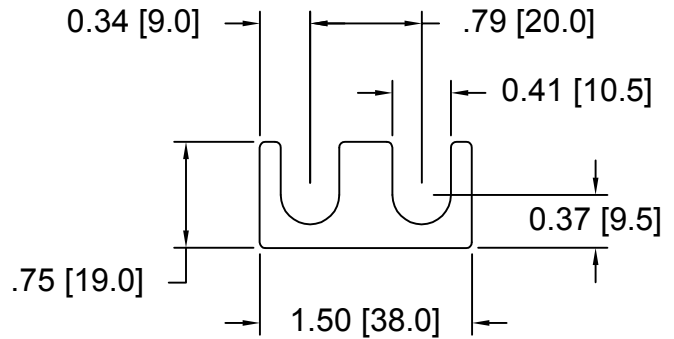


DSCH119 Series - Shim Sets

DSC Part No.	Description	Thickness	Set includes
DSCH119-M505	Five piece metric shim set	5.00mm	(1) 2.00mm, (2) 1.00mm, (2) .50mm
DSCH119-M507	Seven piece metric shim set	5.00mm	(1) 2.00mm, (1) 1.00mm, (3) .50mm, (2) .25mm

DSCH120 Series Shims

DSC Part No.	Thickness	Other part numbers
DSCH120-M025	0.25MM	TYPE 2-T025, DSC1938-51
DSCH120-M050	0.50MM	TYPE 2-T050, DSC1938-52
DSCH120-M100	1.00MM	TYPE 2-T100, DSC1938-53
DSCH120-M200	2.00MM	TYPE 2-T200, DSC1938-54

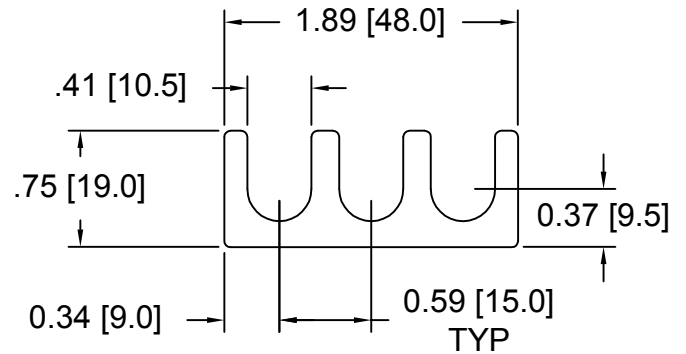


DSCH120 Series - Shim Sets

DSC Part No.	Description	Thickness	Set includes
DSCH120-M505	Five piece metric shim set	5.00mm	(1) 2.00mm, (2) 1.00mm, (2) .50mm
DSCH120-M507	Seven piece metric shim set	5.00mm	(1) 2.00mm, (1) 1.00mm, (3) .50mm, (2) .25mm

DSCH121 Series Shims

DSC Part No.	Thickness	Other part numbers
DSCH121-M025	0.25MM	TYPE 3-T025, DSC1948-51
DSCH121-M050	0.50MM	TYPE 3-T050, DSC1948-52
DSCH121-M100	1.00MM	TYPE 3-T100, DSC1948-53
DSCH121-M200	2.00MM	TYPE 3-T200, DSC1948-54

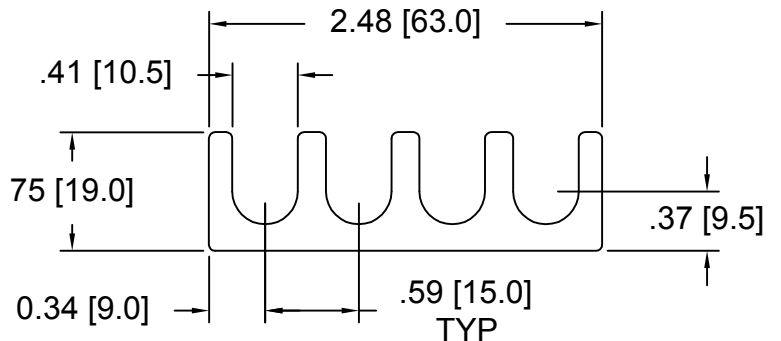


DSCH121 Series - Shim Sets

DSC Part No.	Description	Thickness	Set includes
DSCH121-M505	Five piece metric shim set	5.00mm	(1) 2.00mm, (2) 1.00mm, (2) .50mm
DSCH121-M507	Seven piece metric shim set	5.00mm	(1) 2.00mm, (1) 1.00mm, (3) .50mm, (2) .25mm

DSCH122 Series Shims

DSC Part No.	Thickness	Other part numbers
DSCH122-M025	0.25MM	TYPE 4-T025, DSC1963-51
DSCH122-M050	0.50MM	TYPE 4-T050, DSC1963-52
DSCH122-M100	1.00MM	TYPE 4-T100, DSC1963-53
DSCH122-M200	2.00MM	TYPE 4-T200, DSC1963-54



DSCH122 Series - Shim Sets

DSC Part No.	Description	Thickness	Set includes
DSCH122-M505	Five piece metric shim set	5.00mm	(1) 2.00mm, (2) 1.00mm, (2) .50mm
DSCH122-M507	Seven piece metric shim set	5.00mm	(1) 2.00mm, (1) 1.00mm, (3) .50mm, (2) .25mm

Douglas Stamping Company (248) 542-3940 FAX (248) 542-6342

<http://dougstampco.com> sales@dougstampco.com