

# SPACERS

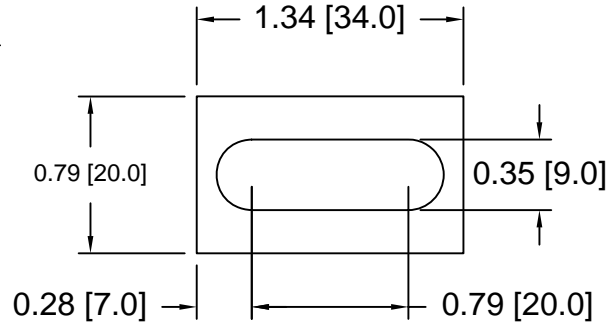
Drawings are not to scale

Metric spacers are black oxidized      Slots and holes are centered unless otherwise noted  
Most spacers are etched on the side with thickness

## DSCP015 Series Spacers

DSC Part No.	Thickness	Other part #s
DSCP015-M300	3.00mm	ASP330S
DSCP015-M320	3.20mm	ASP332S
DSCP015-M340	3.40mm	ASP334S
DSCP015-M360	3.60mm	ASP336S
DSCP015-M380	3.80mm	ASP338S
DSCP015-M400	4.00mm	ASP340S
DSCP015-M420	4.20mm	ASP342S
DSCP015-M440	4.40mm	ASP344S
DSCP015-M460	4.60mm	ASP346S
DSCP015-M480	4.80mm	ASP348S
DSCP015-M500	5.00mm	ASP350S
DSCP015-M520	5.20mm	ASP352S
DSCP015-M540	5.40mm	ASP354S
DSCP015-M560	5.60mm	ASP356S
DSCP015-M580	5.80mm	ASP358S
DSCP015-M600	6.00mm	ASP360S
DSCP015-M620	6.20mm	ASP362S

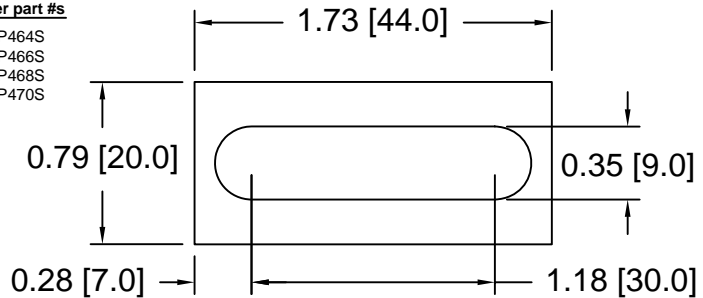
DSC Part No.	Thickness	Other part #s
DSCP015-M640	6.40mm	ASP364S
DSCP015-M660	6.60mm	ASP366S
DSCP015-M680	6.80mm	ASP368S
DSCP015-M700	7.00mm	ASP370S



## DSCP016 Series Spacers

DSC Part No.	Thickness	Other part #s
DSCP016-M300	3.00mm	ASP430S
DSCP016-M320	3.20mm	ASP432S
DSCP016-M340	3.40mm	ASP434S
DSCP016-M360	3.60mm	ASP436S
DSCP016-M380	3.80mm	ASP438S
DSCP016-M400	4.00mm	ASP440S
DSCP016-M420	4.20mm	ASP442S
DSCP016-M440	4.40mm	ASP444S
DSCP016-M460	4.60mm	ASP446S
DSCP016-M480	4.80mm	ASP448S
DSCP016-M500	5.00mm	ASP450S
DSCP016-M520	5.20mm	ASP452S
DSCP016-M540	5.40mm	ASP454S
DSCP016-M560	5.60mm	ASP456S
DSCP016-M580	5.80mm	ASP458S
DSCP016-M600	6.00mm	ASP460S
DSCP016-M620	6.20mm	ASP462S

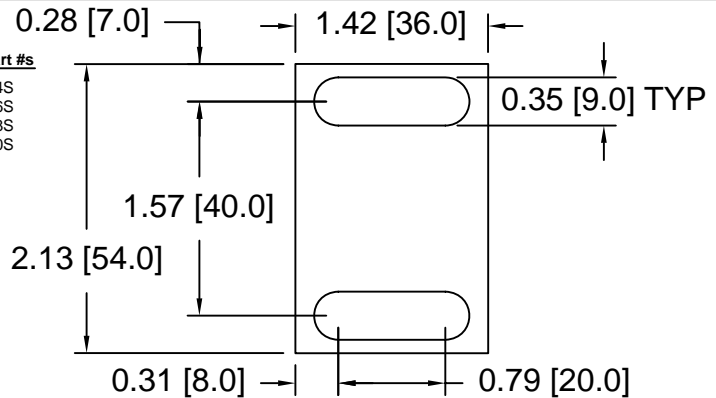
DSC Part No.	Thickness	Other part #s
DSCP016-M640	6.40mm	ASP464S
DSCP016-M660	6.60mm	ASP466S
DSCP016-M680	6.80mm	ASP468S
DSCP016-M700	7.00mm	ASP470S



## DSCP017 Series Spacers

DSC Part No.	Thickness	Other part #s
DSCP017-M300	3.00mm	ASP630S
DSCP017-M320	3.20mm	ASP632S
DSCP017-M340	3.40mm	ASP634S
DSCP017-M360	3.60mm	ASP636S
DSCP017-M380	3.80mm	ASP638S
DSCP017-M400	4.00mm	ASP640S
DSCP017-M420	4.20mm	ASP642S
DSCP017-M440	4.40mm	ASP644S
DSCP017-M460	4.60mm	ASP646S
DSCP017-M480	4.80mm	ASP648S
DSCP017-M500	5.00mm	ASP650S
DSCP017-M520	5.20mm	ASP652S
DSCP017-M540	5.40mm	ASP654S
DSCP017-M560	5.60mm	ASP656S
DSCP017-M580	5.80mm	ASP658S
DSCP017-M600	6.00mm	ASP660S
DSCP017-M620	6.20mm	ASP662S

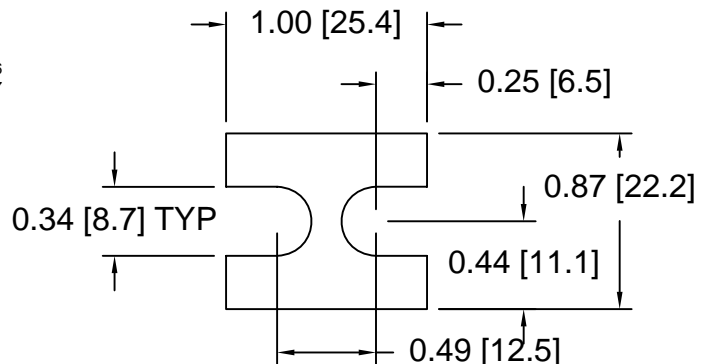
DSC Part No.	Thickness	Other part #s
DSCP017-M640	6.40mm	ASP664S
DSCP017-M660	6.60mm	ASP666S
DSCP017-M680	6.80mm	ASP668S
DSCP017-M700	7.00mm	ASP670S



## DSCP018 Series Spacers

DSC Part No.	Thickness	Other part #s
DSCP018-M050	0.50mm	FSD 40774-45
DSCP018-M100	1.00mm	FSD 40774-47
DSCP018-M200	2.00mm	FSD 40774-51
DSCP018-M225	2.25mm	FSD 40774-52
DSCP018-M250	2.50mm	FSD 40774-53
DSCP018-M275	2.75mm	FSD 40774-54
DSCP018-M300	3.00mm	FSD 40774-55
DSCP018-M325	3.25mm	FSD 40774-56
DSCP018-M350	3.50mm	FSD 40774-57
DSCP018-M375	3.75mm	FSD 40774-58
DSCP018-M400	4.00mm	FSD 40774-59
DSCP018-M425	4.25mm	FSD 40774-60
DSCP018-M450	4.50mm	FSD 40774-61
DSCP018-M475	4.75mm	FSD 40774-62
DSCP018-M500	5.00mm	FSD 40774-63
DSCP018-M525	5.25mm	FSD 40774-64
DSCP018-M550	5.50mm	FSD 40774-65

DSC Part No.	Thickness	Other part #s
DSCP018-M575	5.75mm	FSD 40774-66
DSCP018-M600	6.00mm	FSD 40774-67



Douglas Stamping Company (248) 542-3940 FAX (248) 542-6342

<http://dougstampco.com>      [sales@dougstampco.com](mailto:sales@dougstampco.com)