

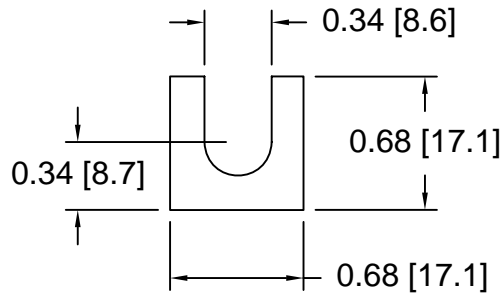
SPACERS

Drawings are not to scale

Metric spacers are black oxidized Slots and holes are centered unless otherwise noted
Most spacers are etched on the side with thickness

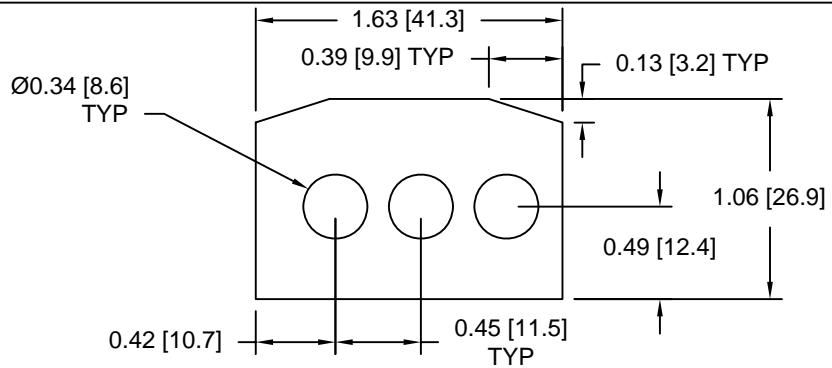
DSCP027 Series Spacers

| DSC Part No. | Thickness | Other part numbers |
|--------------|-----------|--------------------|
| DSCP027-M025 | 0.25mm | FSD 41238-51 |
| DSCP027-M050 | 0.50mm | FSD 41238-52 |
| DSCP027-M100 | 1.00mm | FSD 41238-53 |
| DSCP027-M200 | 2.00mm | FSD 41238-54 |
| DSCP027-M300 | 3.00mm | FSD 41238-55 |
| DSCP027-M400 | 4.00mm | FSD 41238-56 |
| DSCP027-M500 | 5.00mm | FSD 41238-57 |



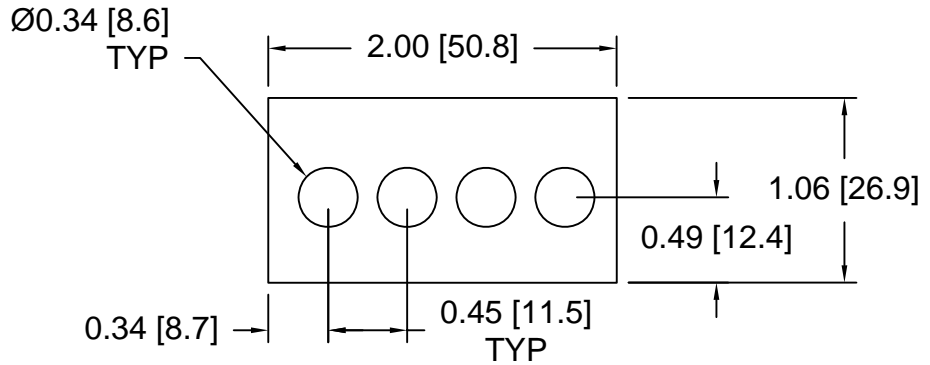
DSCP028 Series Spacers

| DSC Part No. | Thickness | Other part numbers |
|--------------|-----------|---------------------------|
| DSCP028-M050 | 0.50mm | 41-502-1901, SAS 32740-05 |
| DSCP028-M100 | 1.00mm | 41-502-1902, SAS 32740-10 |
| DSCP028-M150 | 1.50mm | 41-502-1903, SAS 32740-15 |
| DSCP028-M200 | 2.00mm | 41-502-1904, SAS 32740-20 |
| DSCP028-M250 | 2.50mm | 41-502-1905, SAS 32740-25 |
| DSCP028-M300 | 3.00mm | 41-502-1906, SAS 32740-30 |
| DSCP028-M350 | 3.50mm | 41-502-1907, SAS 32740-35 |
| DSCP028-M400 | 4.00mm | 41-502-1908, SAS 32740-40 |
| DSCP028-M450 | 4.50mm | 41-502-1909, SAS 32740-45 |
| DSCP028-M500 | 5.00mm | 41-502-1910, SAS 32740-50 |
| DSCP028-M550 | 5.50mm | 41-502-1911, SAS 32740-55 |
| DSCP028-M600 | 6.00mm | 41-502-1912, SAS 32740-60 |
| DSCP028-M650 | 6.50mm | 41-502-1913, SAS 32740-65 |
| DSCP028-M700 | 7.00mm | 41-502-1914, SAS 32740-70 |
| DSCP028-M750 | 7.50mm | 41-502-1915, SAS 32740-75 |
| DSCP028-M800 | 8.00mm | 41-502-1916, SAS 32740-80 |



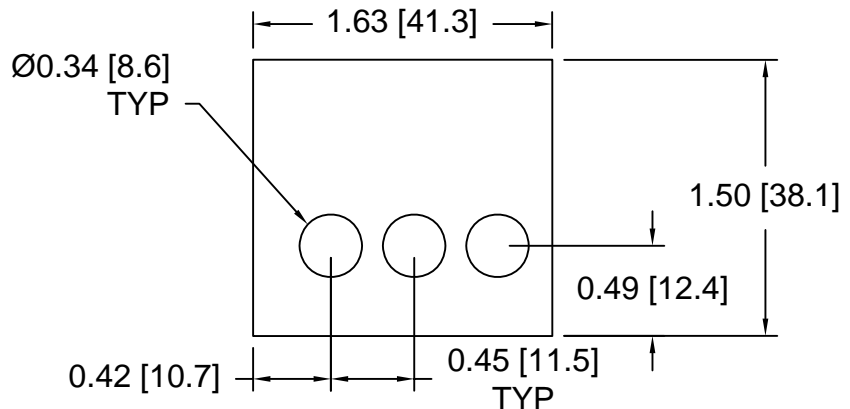
DSCP029 Series Spacers

| DSC Part No. | Thickness | Other part numbers |
|--------------|-----------|---------------------------|
| DSCP029-M050 | 0.50mm | 41-502-1920, SAS 42751-05 |
| DSCP029-M100 | 1.00mm | 41-502-1921, SAS 42751-10 |
| DSCP029-M150 | 1.50mm | 41-502-1922, SAS 42751-15 |
| DSCP029-M200 | 2.00mm | 41-502-1923, SAS 42751-20 |
| DSCP029-M250 | 2.50mm | 41-502-1924, SAS 42751-25 |
| DSCP029-M300 | 3.00mm | 41-502-1925, SAS 42751-30 |
| DSCP029-M350 | 3.50mm | 41-502-1926, SAS 42751-35 |
| DSCP029-M400 | 4.00mm | 41-502-1927, SAS 42751-40 |
| DSCP029-M450 | 4.50mm | 41-502-1928, SAS 42751-45 |
| DSCP029-M500 | 5.00mm | 41-502-1929, SAS 42751-50 |
| DSCP029-M550 | 5.50mm | 41-502-1930, SAS 42751-55 |
| DSCP029-M600 | 6.00mm | 41-502-1931, SAS 42751-60 |
| DSCP029-M650 | 6.50mm | 41-502-1932, SAS 42751-65 |
| DSCP029-M700 | 7.00mm | 41-502-1933, SAS 42751-70 |
| DSCP029-M750 | 7.50mm | 41-502-1934, SAS 42751-75 |
| DSCP029-M800 | 8.00mm | 41-502-1935, SAS 42751-80 |



DSCP030 Series Spacers

| DSC Part No. | Thickness | Other part numbers |
|--------------|-----------|---------------------------|
| DSCP030-M050 | 0.50mm | 41-502-1940, SAS 33840-05 |
| DSCP030-M100 | 1.00mm | 41-502-1941, SAS 33840-10 |
| DSCP030-M150 | 1.50mm | 41-502-1942, SAS 33840-15 |
| DSCP030-M200 | 2.00mm | 41-502-1943, SAS 33840-20 |
| DSCP030-M250 | 2.50mm | 41-502-1944, SAS 33840-25 |
| DSCP030-M300 | 3.00mm | 41-502-1945, SAS 33840-30 |
| DSCP030-M350 | 3.50mm | 41-502-1946, SAS 33840-35 |
| DSCP030-M400 | 4.00mm | 41-502-1947, SAS 33840-40 |
| DSCP030-M450 | 4.50mm | 41-502-1948, SAS 33840-45 |
| DSCP030-M500 | 5.00mm | 41-502-1949, SAS 33840-50 |
| DSCP030-M550 | 5.50mm | 41-502-1950, SAS 33840-55 |
| DSCP030-M600 | 6.00mm | 41-502-1951, SAS 33840-60 |
| DSCP030-M650 | 6.50mm | 41-502-1952, SAS 33840-65 |
| DSCP030-M700 | 7.00mm | 41-502-1953, SAS 33840-70 |
| DSCP030-M750 | 7.50mm | 41-502-1954, SAS 33840-75 |
| DSCP030-M800 | 8.00mm | 41-502-1955, SAS 33840-80 |



Douglas Stamping Company (248) 542-3940 FAX (248) 542-6342

<http://dougstampco.com> sales@dougstampco.com