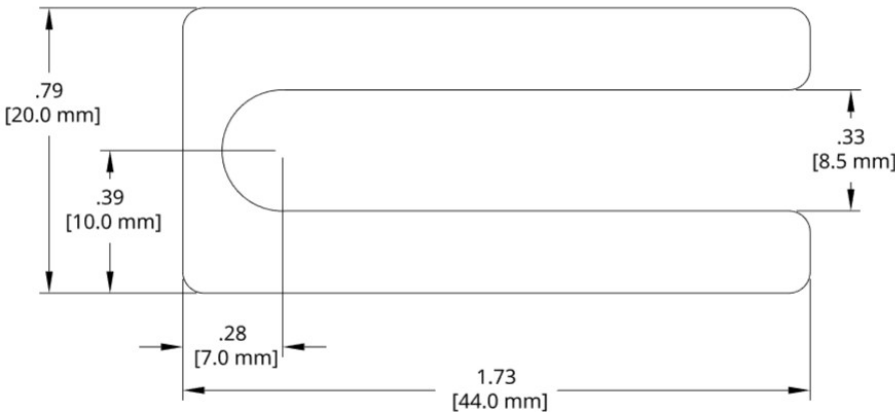
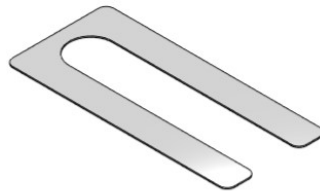


DSCH049 Series Shims



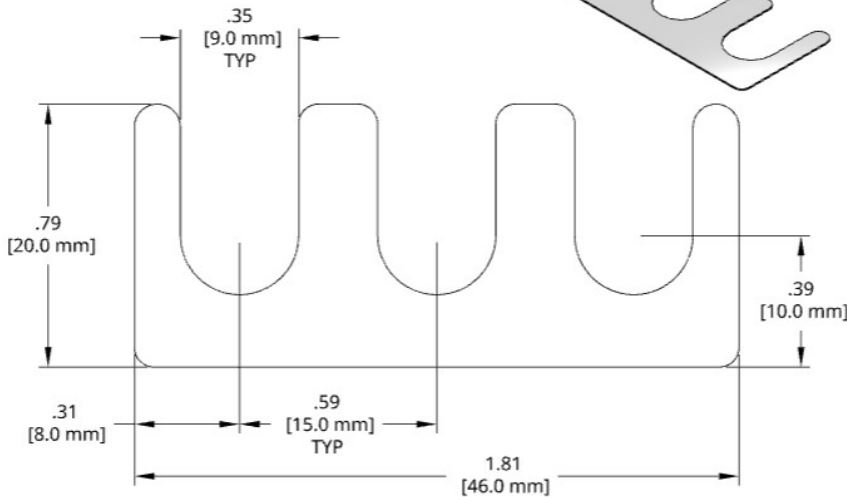
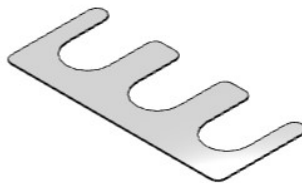
Full Hard 1010 steel shim stock. .25mm and 2.00mm unfinished, .50mm yellow dichromate and 1.00mm black oxide finish.

Add a **K** to the end of the Bulk Set number for assembled (kitted) sets.

| Individual Shim | Thickness |
|-----------------|-----------|
| DSCH049-M025 | .25 mm |
| DSCH049-M050 | .50 mm |
| DSCH049-M100 | 1.00 mm |
| DSCH049-M200 | 2.00 mm |
| DSCH049-E015 | .015 inch |
| DSCH049-E032 | .032 inch |
| DSCH049-E062 | .062 inch |

| Bulk Set | Thick | Set Includes |
|--------------|----------|--|
| DSCH049-M305 | 3.0mm | (0) 2.00mm, (2) 1.00mm, (1) .50mm, (2) .25mm |
| DSCH049-M454 | 4.5mm | (1) 2.00mm, (2) 1.00mm, (1) .50mm, (0) .25mm |
| DSCH049-M505 | 5.0mm | (1) 2.00mm, (2) 1.00mm, (2) .50mm, (0) .25mm |
| DSCH049-M506 | 5.0mm | (1) 2.00mm, (2) 1.00mm, (1) .50mm, (2) .25mm |
| DSCH049-M507 | 5.0mm | (1) 2.00mm, (1) 1.00mm, (3) .50mm, (2) .25mm |
| DSCH049-M605 | 6.0mm | (2) 2.00mm, (1) 1.00mm, (2) .50mm, (0) .25mm |
| DSCH049-M706 | 7.0mm | (2) 2.00mm, (2) 1.00mm, (2) .50mm, (0) .25mm |
| DSCH049-E255 | .25 inch | (3) 0.062in, (2) 0.032in |

DSCH050 Series Shims



Full Hard 1010 steel shim stock. .25mm and 2.00mm unfinished, .50mm yellow dichromate and 1.00mm black oxide finish.

Add a **K** to the end of the Bulk Set number for assembled (kitted) sets.

| Individual Shims | Thickness |
|------------------|-----------|
| DSCH050-M025 | .25 mm |
| DSCH050-M050 | .50 mm |
| DSCH050-M100 | 1.00 mm |
| DSCH050-M200 | 2.00 mm |
| DSCH050-E015 | .015 inch |
| DSCH050-E032 | .032 inch |
| DSCH050-E062 | .062 inch |

| Set | Thick | Set Includes |
|--------------|----------|--|
| DSCH050-M305 | 3.0mm | (0) 2.00mm, (2) 1.00mm, (1) .50mm, (2) .25mm |
| DSCH050-M454 | 4.5mm | (1) 2.00mm, (2) 1.00mm, (1) .50mm, (0) .25mm |
| DSCH050-M505 | 5.0mm | (1) 2.00mm, (2) 1.00mm, (2) .50mm, (0) .25mm |
| DSCH050-M506 | 5.0mm | (1) 2.00mm, (2) 1.00mm, (1) .50mm, (2) .25mm |
| DSCH050-M507 | 5.0mm | (1) 2.00mm, (1) 1.00mm, (3) .50mm, (2) .25mm |
| DSCH050-M605 | 6.0mm | (2) 2.00mm, (1) 1.00mm, (2) .50mm, (0) .25mm |
| DSCH050-M706 | 7.0mm | (2) 2.00mm, (2) 1.00mm, (2) .50mm, (0) .25mm |
| DSCH050-E255 | .25 inch | (3) 0.062in, (2) 0.032in |