

Sets are bulk shipped

**Order SHIMS by individual piece or set**

Drawings are not to scale

*Metric shims over 0.25mm thick are black oxidized*

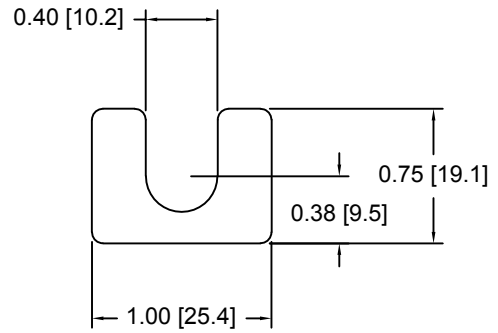
*Slots and holes are centered unless otherwise noted*

**DSCH001 Series - Individual Shims**

DSC Part No.	Description	Thickness	Other part numbers
DSCH001-M025	Metric thickness shim	.25mm	FSD 34492-54
DSCH001-M050	Metric thickness shim	.50mm	FSD 34492-53
DSCH001-M100	Metric thickness shim	1.00mm	FSD 34492-52
DSCH001-M200	Metric thickness shim	2.00mm	FSD 34492-51
DSCH001-E015	Inch thickness shim	.015 inch	FSD 14180-54
DSCH001-E032	Inch thickness shim	.031 Inch	FSD 14180-52
DSCH001-E062	Inch thickness shim	.062 inch	FSD 14180-51

**DSCH001 Series - Shim Sets**

DSC Part No.	Description	Thickness	Set includes
DSCH001-M454	Four piece metric shim set	4.50mm	(1) 2.00mm, (2) 1.00mm, (1) .50mm
DSCH001-M505	Five piece metric shim set	5.00mm	(1) 2.00mm, (2) 1.00mm, (2) .50mm
DSCH001-M506	Six piece metric shim set	5.00mm	(1) 2.00mm, (2) 1.00mm, (1) .50mm, (2) .25mm
DSCH001-M507	Seven piece metric shim set	5.00mm	(1) 2.00mm, (1) 1.00mm, (3) .50mm, (2) .25mm
DSCH001-M605	Five piece metric shim set	6.00mm	(2) 2.00mm, (1) 1.00mm, (2) .50mm
DSCH001-E255	Five piece inch shim set	.250 inch	(3) .062 inch, (2) .031 Inch

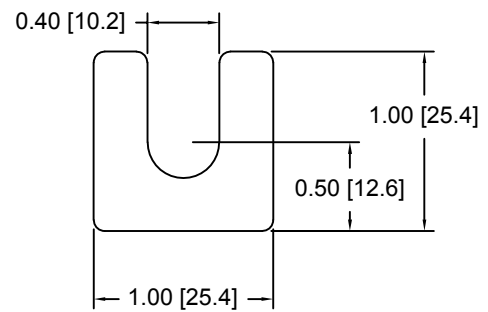


**DSCH002 Series - Individual Shims**

DSC Part No.	Description	Thickness	Other part numbers
DSCH002-M025	Metric thickness shim	.25mm	FSD 34493-54, GSD-B-25
DSCH002-M050	Metric thickness shim	.50mm	FSD 34493-53, GSD-B-50
DSCH002-M100	Metric thickness shim	1.00mm	FSD 34493-52, GSD-B-1
DSCH002-M200	Metric thickness shim	2.00mm	FSD 34493-51, GSD-B-2
DSCH002-E015	Inch thickness shim	.015 inch	FSD 14181-54
DSCH002-E032	Inch thickness shim	.031 Inch	FSD 14181-52
DSCH002-E062	Inch thickness shim	.062 inch	FSD 14181-51

**DSCH002 Series - Shim Sets**

DSC Part No.	Description	Thickness	Set includes
DSCH002-M454	Four piece metric shim set	4.50mm	(1) 2.00mm, (2) 1.00mm, (1) .50mm
DSCH002-M505	Five piece metric shim set	5.00mm	(1) 2.00mm, (2) 1.00mm, (2) .50mm
DSCH002-M506	Six piece metric shim set	5.00mm	(1) 2.00mm, (2) 1.00mm, (1) .50mm, (2) .25mm
DSCH002-M507	Seven piece metric shim set	5.00mm	(1) 2.00mm, (1) 1.00mm, (3) .50mm, (2) .25mm
DSCH002-M605	Five piece metric shim set	6.00mm	(2) 2.00mm, (1) 1.00mm, (2) .50mm
DSCH002-E255	Five piece inch shim set	.250 inch	(3) .062 inch, (2) .031 Inch

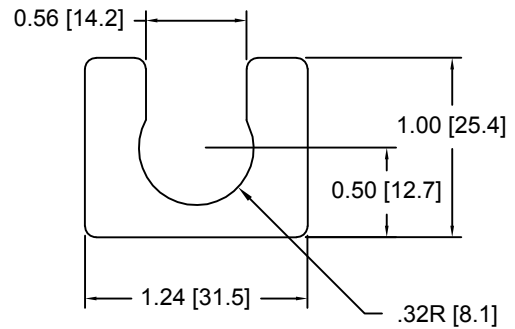


**DSCH003 Series - Individual Shims**

DSC Part No.	Description	Thickness	Other part numbers
DSCH003-M025	Metric thickness shim	.25mm	FSD 34494-54
DSCH003-M050	Metric thickness shim	.50mm	FSD 34494-53
DSCH003-M100	Metric thickness shim	1.00mm	FSD 34494-52
DSCH003-M200	Metric thickness shim	2.00mm	FSD 34494-51
DSCH003-E015	Inch thickness shim	.015 inch	FSD 14129-54
DSCH003-E032	Inch thickness shim	.031 Inch	FSD 14129-52
DSCH003-E062	Inch thickness shim	.062 inch	FSD 14129-51

**DSCH003 Series - Shim Sets**

DSC Part No.	Description	Thickness	Set includes
DSCH003-M454	Four piece metric shim set	4.50mm	(1) 2.00mm, (2) 1.00mm, (1) .50mm
DSCH003-M505	Five piece metric shim set	5.00mm	(1) 2.00mm, (2) 1.00mm, (2) .50mm
DSCH003-M506	Six piece metric shim set	5.00mm	(1) 2.00mm, (2) 1.00mm, (1) .50mm, (2) .25mm
DSCH003-M507	Seven piece metric shim set	5.00mm	(1) 2.00mm, (1) 1.00mm, (3) .50mm, (2) .25mm
DSCH003-M605	Five piece metric shim set	6.00mm	(2) 2.00mm, (1) 1.00mm, (2) .50mm
DSCH003-E255	Five piece inch shim set	.250 inch	(3) .062 inch, (2) .031 Inch

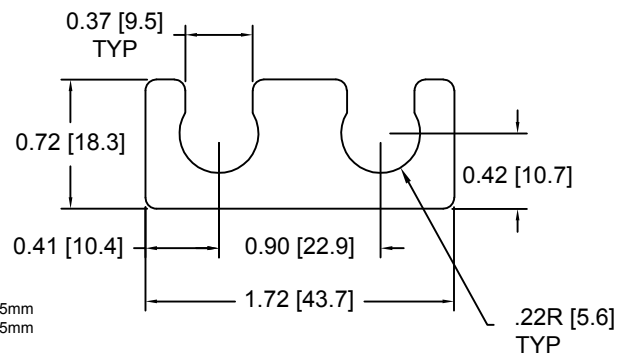


**DSCH004 Series - Individual Shims**

DSC Part No.	Description	Thickness	Other part numbers
DSCH004-M025	Metric thickness shim	.25mm	FSD 34495-54
DSCH004-M050	Metric thickness shim	.50mm	FSD 34495-53
DSCH004-M100	Metric thickness shim	1.00mm	FSD 34495-52
DSCH004-M200	Metric thickness shim	2.00mm	FSD 34495-51
DSCH004-E015	Inch thickness shim	.015 inch	FSD 14050-54
DSCH004-E032	Inch thickness shim	.031 Inch	FSD 14050-52
DSCH004-E062	Inch thickness shim	.062 inch	FSD 14050-51

**DSCH004 Series - Shim Sets**

DSC Part No.	Description	Thickness	Set includes
DSCH004-M454	Four piece metric shim set	4.50mm	(1) 2.00mm, (2) 1.00mm, (1) .50mm
DSCH004-M505	Five piece metric shim set	5.00mm	(1) 2.00mm, (2) 1.00mm, (2) .50mm
DSCH004-M506	Six piece metric shim set	5.00mm	(1) 2.00mm, (2) 1.00mm, (1) .50mm, (2) .25mm
DSCH004-M507	Seven piece metric shim set	5.00mm	(1) 2.00mm, (1) 1.00mm, (3) .50mm, (2) .25mm
DSCH004-M605	Five piece metric shim set	6.00mm	(2) 2.00mm, (1) 1.00mm, (2) .50mm
DSCH004-E255	Five piece inch shim set	.250 inch	(3) .062 inch, (2) .031 Inch



Douglas Stamping Company (248) 542-3940 FAX (248) 542-6342

<http://dougstampco.com> [sales@dougstampco.com](mailto:sales@dougstampco.com)