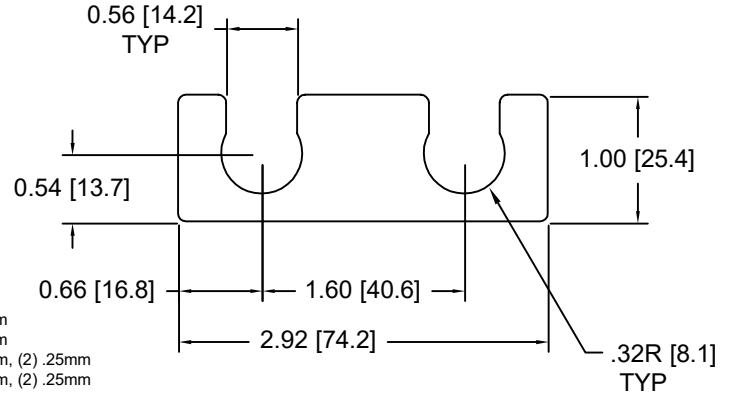


**DSCCH013 Series - Individual Shims**

DSC Part No.	Description	Thickness	Other part numbers
DSCCH013-M025	Metric thickness shim	.25mm	FSD 34504-54
DSCCH013-M050	Metric thickness shim	.50mm	FSD 34504-53
DSCCH013-M100	Metric thickness shim	1.00mm	FSD 34504-52
DSCCH013-M200	Metric thickness shim	2.00mm	FSD 34504-51
DSCCH013-E015	Inch thickness shim	.015 inch	FSD 14053-54
DSCCH013-E032	Inch thickness shim	.031 inch	FSD 14053-52
DSCCH013-E062	Inch thickness shim	.062 inch	FSD 14053-51

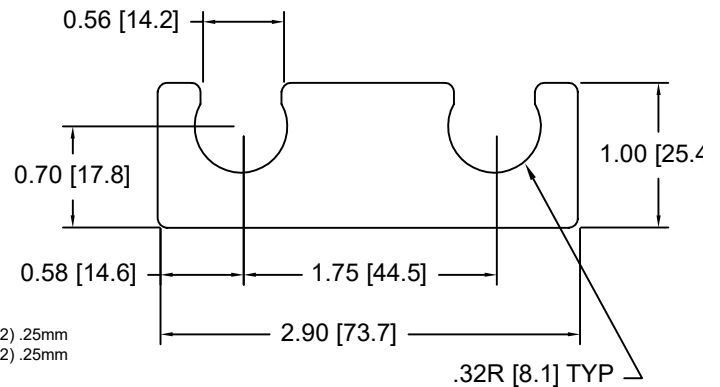


**DSCCH013 Series - Shim Sets**

DSC Part No.	Description	Thickness	Set includes
DSCCH013-M454	Four piece metric shim set	4.50mm	(1) 2.00mm, (2) 1.00mm, (1) .50mm
DSCCH013-M505	Five piece metric shim set	5.00mm	(1) 2.00mm, (2) 1.00mm, (2) .50mm
DSCCH013-M506	Six piece metric shim set	5.00mm	(1) 2.00mm, (2) 1.00mm, (1) .50mm, (2) .25mm
DSCCH013-M507	Seven piece metric shim set	5.00mm	(1) 2.00mm, (1) 1.00mm, (3) .50mm, (2) .25mm
DSCCH013-M605	Five piece metric shim set	6.00mm	(2) 2.00mm, (1) 1.00mm, (2) .50mm
DSCCH013-E255	Five piece inch shim set	.250 inch	(3) .062 inch, (2) .031 inch

**DSCCH014 Series - Individual Shims**

DSC Part No.	Description	Thickness	Other part numbers
DSCCH014-M025	Metric thickness shim	.25mm	FSD 34505-54
DSCCH014-M050	Metric thickness shim	.50mm	FSD 34505-53
DSCCH014-M100	Metric thickness shim	1.00mm	FSD 34505-52
DSCCH014-M200	Metric thickness shim	2.00mm	FSD 34505-51
DSCCH014-E015	Inch thickness shim	.015 inch	FSD 14068-54
DSCCH014-E032	Inch thickness shim	.031 inch	FSD 14068-52
DSCCH014-E062	Inch thickness shim	.062 inch	FSD 14068-51

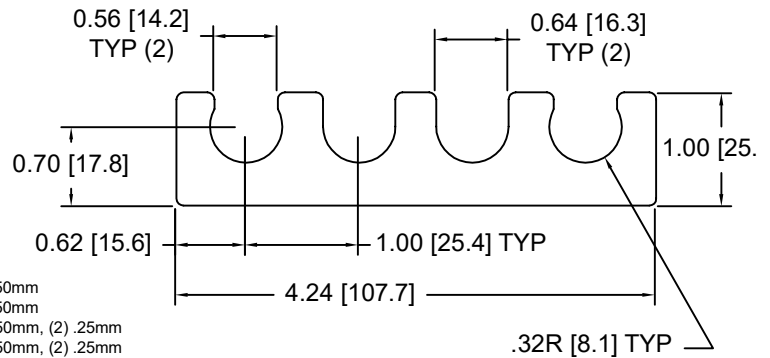


**DSCCH014 Series - Shim Sets**

DSC Part No.	Description	Thickness	Set includes
DSCCH014-M454	Four piece metric shim set	4.50mm	(1) 2.00mm, (2) 1.00mm, (1) .50mm
DSCCH014-M505	Five piece metric shim set	5.00mm	(1) 2.00mm, (2) 1.00mm, (2) .50mm
DSCCH014-M506	Six piece metric shim set	5.00mm	(1) 2.00mm, (2) 1.00mm, (1) .50mm, (2) .25mm
DSCCH014-M507	Seven piece metric shim set	5.00mm	(1) 2.00mm, (1) 1.00mm, (3) .50mm, (2) .25mm
DSCCH014-M605	Five piece metric shim set	6.00mm	(2) 2.00mm, (1) 1.00mm, (2) .50mm
DSCCH014-E255	Five piece inch shim set	.250 inch	(3) .062 inch, (2) .031 inch

**DSCCH015 Series - Individual Shims**

DSC Part No.	Description	Thickness	Other part numbers
DSCCH015-M025	Metric thickness shim	.25mm	FSD 34506-54
DSCCH015-M050	Metric thickness shim	.50mm	FSD 34506-53
DSCCH015-M100	Metric thickness shim	1.00mm	FSD 34506-52
DSCCH015-M200	Metric thickness shim	2.00mm	FSD 34506-51
DSCCH015-E015	Inch thickness shim	.015 inch	FSD 14202-54
DSCCH015-E032	Inch thickness shim	.031 inch	FSD 14202-52
DSCCH015-E062	Inch thickness shim	.062 inch	FSD 14202-51

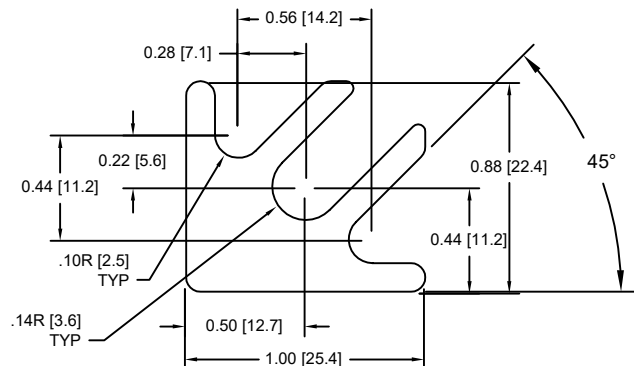


**DSCCH015 Series - Shim Sets**

DSC Part No.	Description	Thickness	Set includes
DSCCH015-M454	Four piece metric shim set	4.50mm	(1) 2.00mm, (2) 1.00mm, (1) .50mm
DSCCH015-M505	Five piece metric shim set	5.00mm	(1) 2.00mm, (2) 1.00mm, (2) .50mm
DSCCH015-M506	Six piece metric shim set	5.00mm	(1) 2.00mm, (2) 1.00mm, (1) .50mm, (2) .25mm
DSCCH015-M507	Seven piece metric shim set	5.00mm	(1) 2.00mm, (1) 1.00mm, (3) .50mm, (2) .25mm
DSCCH015-M605	Five piece metric shim set	6.00mm	(2) 2.00mm, (1) 1.00mm, (2) .50mm
DSCCH015-E255	Five piece inch shim set	.250 inch	(3) .062 inch, (2) .031 inch

**DSCCH016 Series - Individual Shims**

DSC Part No.	Description	Thickness	Other part numbers
DSCCH016-M025	Metric thickness shim	.25mm	FSD 34507-54
DSCCH016-M050	Metric thickness shim	.50mm	FSD 34507-53
DSCCH016-M100	Metric thickness shim	1.00mm	FSD 34507-52
DSCCH016-M200	Metric thickness shim	2.00mm	FSD 34507-51
DSCCH016-E015	Inch thickness shim	.015 inch	FSD 14190-54
DSCCH016-E032	Inch thickness shim	.031 inch	FSD 14190-52
DSCCH016-E062	Inch thickness shim	.062 inch	FSD 14190-51



**DSCCH016 Series - Shim Sets**

DSC Part No.	Description	Thickness	Set includes
DSCCH016-M454	Four piece metric shim set	4.50mm	(1) 2.00mm, (2) 1.00mm, (1) .50mm
DSCCH016-M505	Five piece metric shim set	5.00mm	(1) 2.00mm, (2) 1.00mm, (2) .50mm
DSCCH016-M506	Six piece metric shim set	5.00mm	(1) 2.00mm, (2) 1.00mm, (1) .50mm, (2) .25mm
DSCCH016-M507	Seven piece metric shim set	5.00mm	(1) 2.00mm, (1) 1.00mm, (3) .50mm, (2) .25mm
DSCCH016-M605	Five piece metric shim set	6.00mm	(2) 2.00mm, (1) 1.00mm, (2) .50mm
DSCCH016-E255	Five piece inch shim set	.250 inch	(3) .062 inch, (2) .031 inch