

Sets are bulk shipped

Order SHIMS by individual piece or set

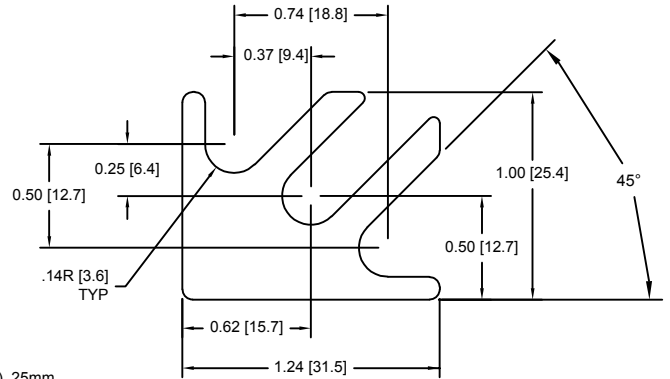
Drawings are not to scale

Metric shims over 0.25mm thick are black oxidized

Slots and holes are centered unless otherwise noted

DSCH017 Series - Individual Shims

DSC Part No.	Description	Thickness	Other part numbers
DSCH017-M025	Metric thickness shim	.25mm	FSD 34508-54
DSCH017-M050	Metric thickness shim	.50mm	FSD 34508-53
DSCH017-M100	Metric thickness shim	1.00mm	FSD 34508-52
DSCH017-M200	Metric thickness shim	2.00mm	FSD 34508-51
DSCH017-E015	Inch thickness shim	.015 inch	FSD 14108-54
DSCH017-E032	Inch thickness shim	.031 Inch	FSD 14108-52
DSCH017-E062	Inch thickness shim	.062 inch	FSD 14108-51

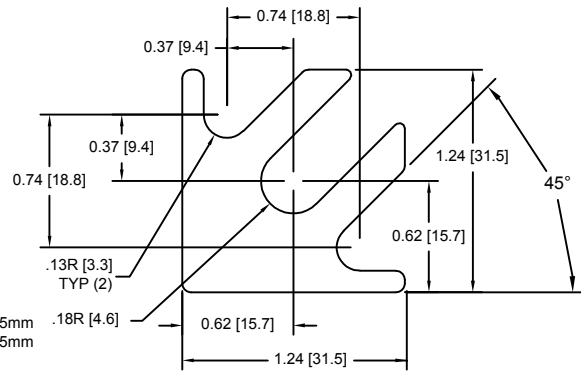


DSCH017 Series - Shim Sets

DSC Part No.	Description	Thickness	Set includes
DSCH017-M454	Four piece metric shim set	4.50mm	(1) 2.00mm, (2) 1.00mm, (1) .50mm
DSCH017-M505	Five piece metric shim set	5.00mm	(1) 2.00mm, (2) 1.00mm, (2) .50mm
DSCH017-M506	Six piece metric shim set	5.00mm	(1) 2.00mm, (2) 1.00mm, (1) .50mm, (2) .25mm
DSCH017-M507	Seven piece metric shim set	5.00mm	(1) 2.00mm, (1) 1.00mm, (3) .50mm, (2) .25mm
DSCH017-M605	Five piece metric shim set	6.00mm	(2) 2.00mm, (1) 1.00mm, (2) .50mm
DSCH017-E255	Five piece inch shim set	.250 inch	(3) .062 inch, (2) .031 Inch

DSCH018 Series - Individual Shims

DSC Part No.	Description	Thickness	Other part numbers
DSCH018-M025	Metric thickness shim	.25mm	FSD 34509-54
DSCH018-M050	Metric thickness shim	.50mm	FSD 34509-53
DSCH018-M100	Metric thickness shim	1.00mm	FSD 34509-52
DSCH018-M200	Metric thickness shim	2.00mm	FSD 34509-51
DSCH018-E015	Inch thickness shim	.015 inch	FSD 14109-54
DSCH018-E032	Inch thickness shim	.031 Inch	FSD 14109-52
DSCH018-E062	Inch thickness shim	.062 inch	FSD 14109-51

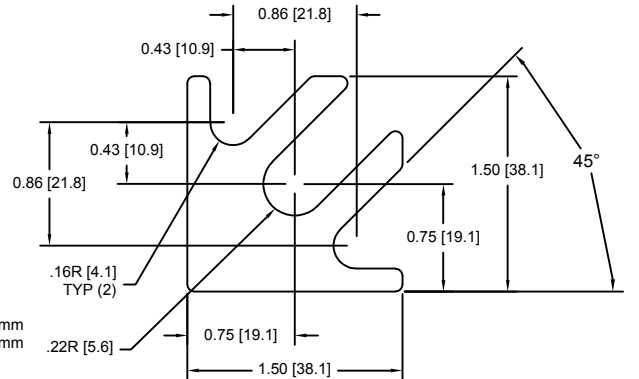


DSCH018 Series - Shim Sets

DSC Part No.	Description	Thickness	Set includes
DSCH018-M454	Four piece metric shim set	4.50mm	(1) 2.00mm, (2) 1.00mm, (1) .50mm
DSCH018-M505	Five piece metric shim set	5.00mm	(1) 2.00mm, (2) 1.00mm, (2) .50mm
DSCH018-M506	Six piece metric shim set	5.00mm	(1) 2.00mm, (2) 1.00mm, (1) .50mm, (2) .25mm
DSCH018-M507	Seven piece metric shim set	5.00mm	(1) 2.00mm, (1) 1.00mm, (3) .50mm, (2) .25mm
DSCH018-M605	Five piece metric shim set	6.00mm	(2) 2.00mm, (1) 1.00mm, (2) .50mm
DSCH018-E255	Five piece inch shim set	.250 inch	(3) .062 inch, (2) .031 Inch

DSCH019 Series - Individual Shims

DSC Part No.	Description	Thickness	Other part numbers
DSCH019-M025	Metric thickness shim	.25mm	FSD 34510-54
DSCH019-M050	Metric thickness shim	.50mm	FSD 34510-53
DSCH019-M100	Metric thickness shim	1.00mm	FSD 34510-52
DSCH019-M200	Metric thickness shim	2.00mm	FSD 34510-51
DSCH019-E015	Inch thickness shim	.015 inch	FSD 14075-54
DSCH019-E032	Inch thickness shim	.031 Inch	FSD 14075-52
DSCH019-E062	Inch thickness shim	.062 inch	FSD 14075-51

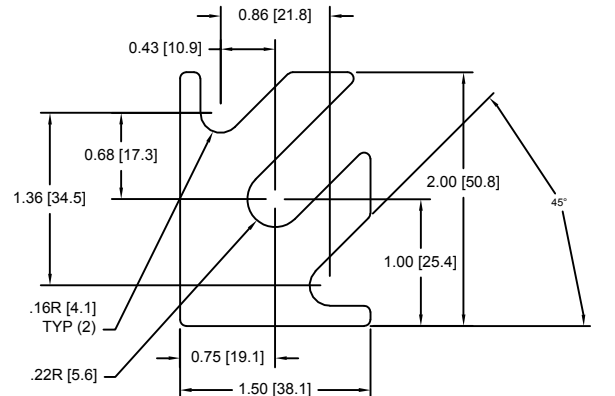


DSCH019 Series - Shim Sets

DSC Part No.	Description	Thickness	Set includes
DSCH019-M454	Four piece metric shim set	4.50mm	(1) 2.00mm, (2) 1.00mm, (1) .50mm
DSCH019-M505	Five piece metric shim set	5.00mm	(1) 2.00mm, (2) 1.00mm, (2) .50mm
DSCH019-M506	Six piece metric shim set	5.00mm	(1) 2.00mm, (2) 1.00mm, (1) .50mm, (2) .25mm
DSCH019-M507	Seven piece metric shim set	5.00mm	(1) 2.00mm, (1) 1.00mm, (3) .50mm, (2) .25mm
DSCH019-M605	Five piece metric shim set	6.00mm	(2) 2.00mm, (1) 1.00mm, (2) .50mm
DSCH019-E255	Five piece inch shim set	.250 inch	(3) .062 inch, (2) .031 Inch

DSCH020 Series - Individual Shims

DSC Part No.	Description	Thickness	Other part numbers
DSCH020-M025	Metric thickness shim	.25mm	FSD 34511-54
DSCH020-M050	Metric thickness shim	.50mm	FSD 34511-53
DSCH020-M100	Metric thickness shim	1.00mm	FSD 34511-52
DSCH020-M200	Metric thickness shim	2.00mm	FSD 34511-51
DSCH020-E015	Inch thickness shim	.015 inch	FSD 14076-54
DSCH020-E032	Inch thickness shim	.031 Inch	FSD 14076-52
DSCH020-E062	Inch thickness shim	.062 inch	FSD 14076-51



DSCH020 Series - Shim Sets

DSC Part No.	Description	Thickness	Set includes
DSCH020-M454	Four piece metric shim set	4.50mm	(1) 2.00mm, (2) 1.00mm, (1) .50mm
DSCH020-M505	Five piece metric shim set	5.00mm	(1) 2.00mm, (2) 1.00mm, (2) .50mm
DSCH020-M506	Six piece metric shim set	5.00mm	(1) 2.00mm, (2) 1.00mm, (1) .50mm, (2) .25mm
DSCH020-M507	Seven piece metric shim set	5.00mm	(1) 2.00mm, (1) 1.00mm, (3) .50mm, (2) .25mm
DSCH020-M605	Five piece metric shim set	6.00mm	(2) 2.00mm, (1) 1.00mm, (2) .50mm
DSCH020-E255	Five piece inch shim set	.250 inch	(3) .062 inch, (2) .031 Inch

Douglas Stamping Company (248) 542-3940 FAX (248) 542-6342

http://dougstampco.com sales@dougstampco.com