

Sets are bulk shipped

Order SHIMS by individual piece or set

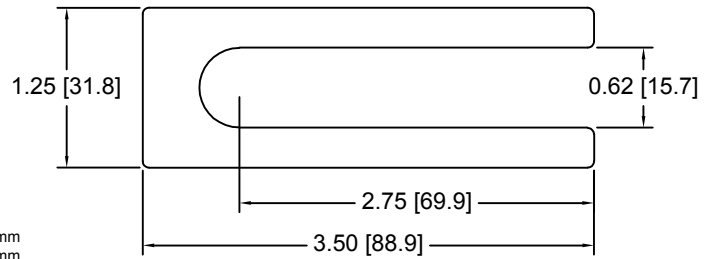
Drawings are not to scale

Metric shims over 0.25mm thick are black oxidized

Slots and holes are centered unless otherwise noted

DSCH021 Series - Individual Shims

| DSC Part No. | Description | Thickness | Other part numbers |
|--------------|-----------------------|-----------|--------------------|
| DSCH021-M025 | Metric thickness shim | .25mm | FSD 39558-54 |
| DSCH021-M050 | Metric thickness shim | .50mm | FSD 39558-53 |
| DSCH021-M100 | Metric thickness shim | 1.00mm | FSD 39558-52 |
| DSCH021-M200 | Metric thickness shim | 2.00mm | FSD 39558-51 |
| DSCH021-E015 | Inch thickness shim | .015 inch | FSD 39600-54 |
| DSCH021-E032 | Inch thickness shim | .031 Inch | FSD 39600-52 |
| DSCH021-E062 | Inch thickness shim | .062 inch | FSD 39600-51 |

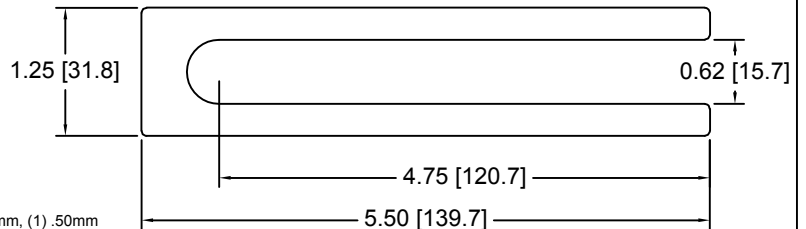


DSCH021 Series - Shim Sets

| DSC Part No. | Description | Thickness | Set includes |
|--------------|-----------------------------|-----------|--|
| DSCH021-M454 | Four piece metric shim set | 4.50mm | (1) 2.00mm, (2) 1.00mm, (1) .50mm |
| DSCH021-M505 | Five piece metric shim set | 5.00mm | (1) 2.00mm, (2) 1.00mm, (2) .50mm |
| DSCH021-M506 | Six piece metric shim set | 5.00mm | (1) 2.00mm, (2) 1.00mm, (1) .50mm, (2) .25mm |
| DSCH021-M507 | Seven piece metric shim set | 5.00mm | (1) 2.00mm, (1) 1.00mm, (3) .50mm, (2) .25mm |
| DSCH021-M605 | Five piece metric shim set | 6.00mm | (2) 2.00mm, (1) 1.00mm, (2) .50mm |
| DSCH021-E255 | Five piece inch shim set | .250 inch | (3) .062 inch, (2) .031 Inch |

DSCH022 Series - Individual Shims

| DSC Part No. | Description | Thickness | Other part numbers |
|--------------|-----------------------|-----------|--------------------|
| DSCH022-M025 | Metric thickness shim | .25mm | FSD 39559-54 |
| DSCH022-M050 | Metric thickness shim | .50mm | FSD 39559-53 |
| DSCH022-M100 | Metric thickness shim | 1.00mm | FSD 39559-52 |
| DSCH022-M200 | Metric thickness shim | 2.00mm | FSD 39559-51 |
| DSCH022-E015 | Inch thickness shim | .015 inch | FSD 39601-54 |
| DSCH022-E032 | Inch thickness shim | .031 Inch | FSD 39601-52 |
| DSCH022-E062 | Inch thickness shim | .062 inch | FSD 39601-51 |

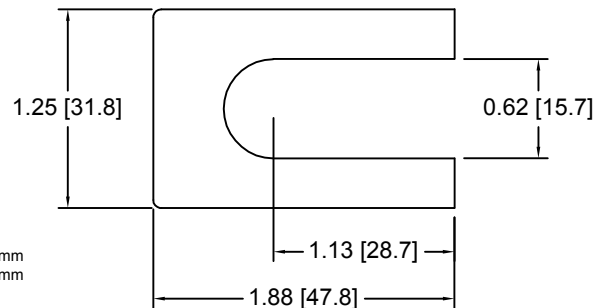


DSCH022 Series - Shim Sets

| DSC Part No. | Description | Thickness | Set includes |
|--------------|-----------------------------|-----------|--|
| DSCH022-M454 | Four piece metric shim set | 4.50mm | (1) 2.00mm, (2) 1.00mm, (1) .50mm |
| DSCH022-M505 | Five piece metric shim set | 5.00mm | (1) 2.00mm, (2) 1.00mm, (2) .50mm |
| DSCH022-M506 | Six piece metric shim set | 5.00mm | (1) 2.00mm, (2) 1.00mm, (1) .50mm, (2) .25mm |
| DSCH022-M507 | Seven piece metric shim set | 5.00mm | (1) 2.00mm, (1) 1.00mm, (3) .50mm, (2) .25mm |
| DSCH022-M605 | Five piece metric shim set | 6.00mm | (2) 2.00mm, (1) 1.00mm, (2) .50mm |
| DSCH022-E255 | Five piece inch shim set | .250 inch | (3) .062 inch, (2) .031 Inch |

DSCH023 Series - Individual Shims

| DSC Part No. | Description | Thickness | Other part numbers |
|--------------|-----------------------|-----------|--------------------|
| DSCH023-M025 | Metric thickness shim | .25mm | DSC-625S-54 |
| DSCH023-M050 | Metric thickness shim | .50mm | DSC-625S-53 |
| DSCH023-M100 | Metric thickness shim | 1.00mm | DSC-625S-52 |
| DSCH023-M200 | Metric thickness shim | 2.00mm | DSC-625S-51 |
| DSCH023-E015 | Inch thickness shim | .015 inch | 125187-54 |
| DSCH023-E032 | Inch thickness shim | .031 Inch | 125187-52 |
| DSCH023-E062 | Inch thickness shim | .062 inch | 125187-51 |

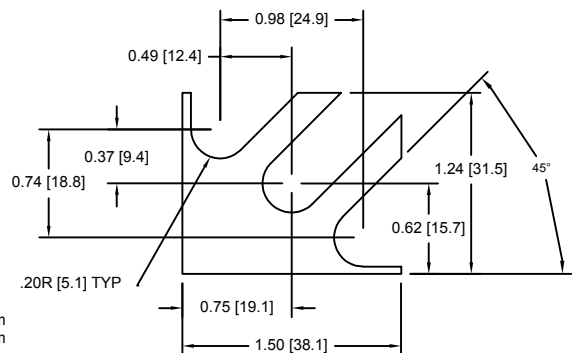


DSCH023 Series - Shim Sets

| DSC Part No. | Description | Thickness | Set includes |
|--------------|-----------------------------|-----------|--|
| DSCH023-M454 | Four piece metric shim set | 4.50mm | (1) 2.00mm, (2) 1.00mm, (1) .50mm |
| DSCH023-M505 | Five piece metric shim set | 5.00mm | (1) 2.00mm, (2) 1.00mm, (2) .50mm |
| DSCH023-M506 | Six piece metric shim set | 5.00mm | (1) 2.00mm, (2) 1.00mm, (1) .50mm, (2) .25mm |
| DSCH023-M507 | Seven piece metric shim set | 5.00mm | (1) 2.00mm, (1) 1.00mm, (3) .50mm, (2) .25mm |
| DSCH023-M605 | Five piece metric shim set | 6.00mm | (2) 2.00mm, (1) 1.00mm, (2) .50mm |
| DSCH023-E255 | Five piece inch shim set | .250 inch | (3) .062 inch, (2) .031 Inch |

DSCH024 Series - Individual Shims

| DSC Part No. | Description | Thickness | Other part numbers |
|--------------|-----------------------|-----------|--------------------|
| DSCH024-M025 | Metric thickness shim | .25mm | FSD 40800-54 |
| DSCH024-M050 | Metric thickness shim | .50mm | FSD 40800-53 |
| DSCH024-M100 | Metric thickness shim | 1.00mm | FSD 40800-52 |
| DSCH024-M200 | Metric thickness shim | 2.00mm | FSD 40800-51 |



DSCH024 Series - Shim Sets

| DSC Part No. | Description | Thickness | Set includes |
|--------------|-----------------------------|-----------|--|
| DSCH024-M454 | Four piece metric shim set | 4.50mm | (1) 2.00mm, (2) 1.00mm, (1) .50mm |
| DSCH024-M505 | Five piece metric shim set | 5.00mm | (1) 2.00mm, (2) 1.00mm, (2) .50mm |
| DSCH024-M506 | Six piece metric shim set | 5.00mm | (1) 2.00mm, (2) 1.00mm, (1) .50mm, (2) .25mm |
| DSCH024-M507 | Seven piece metric shim set | 5.00mm | (1) 2.00mm, (1) 1.00mm, (3) .50mm, (2) .25mm |
| DSCH024-M605 | Five piece metric shim set | 6.00mm | (2) 2.00mm, (1) 1.00mm, (2) .50mm |

Douglas Stamping Company (248) 542-3940 FAX (248) 542-6342

<http://dougstampco.com> sales@dougstampco.com