

Sets are bulk shipped

Order SHIMS by individual piece or set

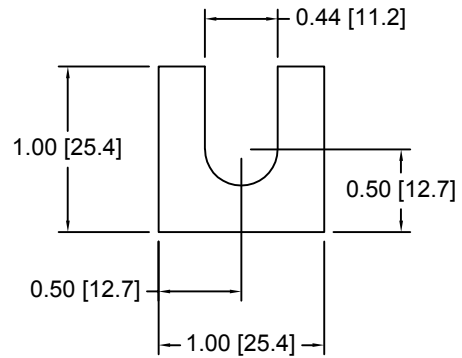
Drawings are not to scale

Metric shims over 0.25mm thick are black oxidized

Slots and holes are centered unless otherwise noted

DSCH029 Series - Individual Shims

DSC Part No.	Description	Thickness	Other part numbers
DSCH029-M025	Metric thickness shim	.25mm	FSD 40891-54
DSCH029-M050	Metric thickness shim	.50mm	FSD 40891-53
DSCH029-M100	Metric thickness shim	1.00mm	FSD 40891-52
DSCH029-M200	Metric thickness shim	2.00mm	FSD 40891-51

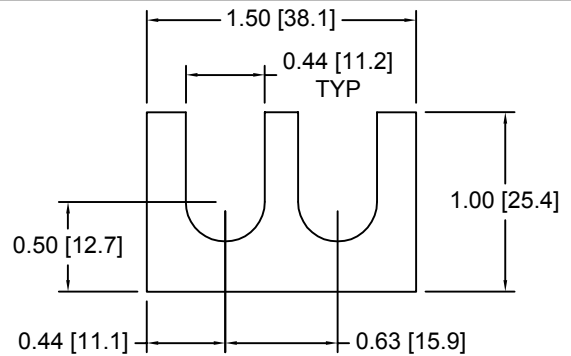


DSCH029 Series - Shim Sets

DSC Part No.	Description	Thickness	Set includes
DSCH029-M454	Four piece metric shim set	4.50mm	(1) 2.00mm, (2) 1.00mm, (1) .50mm
DSCH029-M505	Five piece metric shim set	5.00mm	(1) 2.00mm, (2) 1.00mm, (2) .50mm
DSCH029-M506	Six piece metric shim set	5.00mm	(1) 2.00mm, (2) 1.00mm, (1) .50mm, (2) .25mm
DSCH029-M507	Seven piece metric shim set	5.00mm	(1) 2.00mm, (1) 1.00mm, (3) .50mm, (2) .25mm
DSCH029-M605	Five piece metric shim set	6.00mm	(2) 2.00mm, (1) 1.00mm, (2) .50mm

DSCH030 Series - Individual Shims

DSC Part No.	Description	Thickness	Other part numbers
DSCH030-M025	Metric thickness shim	.25mm	FSD 40892-54
DSCH030-M050	Metric thickness shim	.50mm	FSD 40892-53
DSCH030-M100	Metric thickness shim	1.00mm	FSD 40892-52
DSCH030-M200	Metric thickness shim	2.00mm	FSD 40892-51

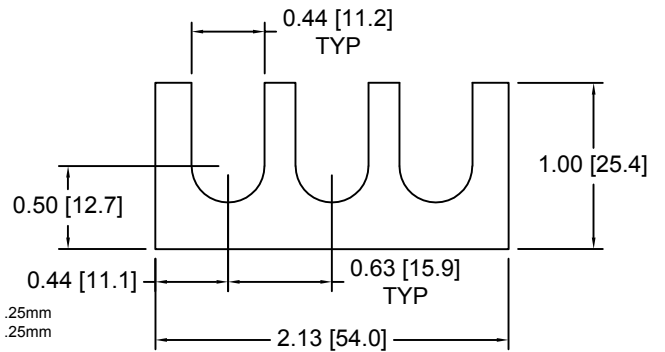


DSCH030 Series - Shim Sets

DSC Part No.	Description	Thickness	Set includes
DSCH030-M454	Four piece metric shim set	4.50mm	(1) 2.00mm, (2) 1.00mm, (1) .50mm
DSCH030-M505	Five piece metric shim set	5.00mm	(1) 2.00mm, (2) 1.00mm, (2) .50mm
DSCH030-M506	Six piece metric shim set	5.00mm	(1) 2.00mm, (2) 1.00mm, (1) .50mm, (2) .25mm
DSCH030-M507	Seven piece metric shim set	5.00mm	(1) 2.00mm, (1) 1.00mm, (3) .50mm, (2) .25mm
DSCH030-M605	Five piece metric shim set	6.00mm	(2) 2.00mm, (1) 1.00mm, (2) .50mm

DSCH031 Series - Individual Shims

DSC Part No.	Description	Thickness	Other part numbers
DSCH031-M025	Metric thickness shim	.25mm	FSD 40893-54
DSCH031-M050	Metric thickness shim	.50mm	FSD 40893-53
DSCH031-M100	Metric thickness shim	1.00mm	FSD 40893-52
DSCH031-M200	Metric thickness shim	2.00mm	FSD 40893-51

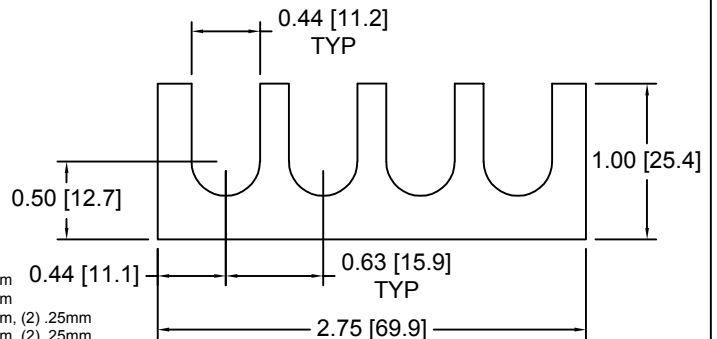


DSCH031 Series - Shim Sets

DSC Part No.	Description	Thickness	Set includes
DSCH031-M454	Four piece metric shim set	4.50mm	(1) 2.00mm, (2) 1.00mm, (1) .50mm
DSCH031-M505	Five piece metric shim set	5.00mm	(1) 2.00mm, (2) 1.00mm, (2) .50mm
DSCH031-M506	Six piece metric shim set	5.00mm	(1) 2.00mm, (2) 1.00mm, (1) .50mm, (2) .25mm
DSCH031-M507	Seven piece metric shim set	5.00mm	(1) 2.00mm, (1) 1.00mm, (3) .50mm, (2) .25mm
DSCH031-M605	Five piece metric shim set	6.00mm	(2) 2.00mm, (1) 1.00mm, (2) .50mm

DSCH032 Series - Individual Shims

DSC Part No.	Description	Thickness	Other part numbers
DSCH032-M025	Metric thickness shim	.25mm	FSD 40894-54
DSCH032-M050	Metric thickness shim	.50mm	FSD 40894-53
DSCH032-M100	Metric thickness shim	1.00mm	FSD 40894-52
DSCH032-M200	Metric thickness shim	2.00mm	FSD 40894-51



DSCH032 Series - Shim Sets

DSC Part No.	Description	Thickness	Set includes
DSCH032-M454	Four piece metric shim set	4.50mm	(1) 2.00mm, (2) 1.00mm, (1) .50mm
DSCH032-M505	Five piece metric shim set	5.00mm	(1) 2.00mm, (2) 1.00mm, (2) .50mm
DSCH032-M506	Six piece metric shim set	5.00mm	(1) 2.00mm, (2) 1.00mm, (1) .50mm, (2) .25mm
DSCH032-M507	Seven piece metric shim set	5.00mm	(1) 2.00mm, (1) 1.00mm, (3) .50mm, (2) .25mm
DSCH032-M605	Five piece metric shim set	6.00mm	(2) 2.00mm, (1) 1.00mm, (2) .50mm

Douglas Stamping Company (248) 542-3940 FAX (248) 542-6342

<http://dougstampco.com> sales@dougstampco.com