

Sets are bulk shipped

Order SHIMS by individual piece or set

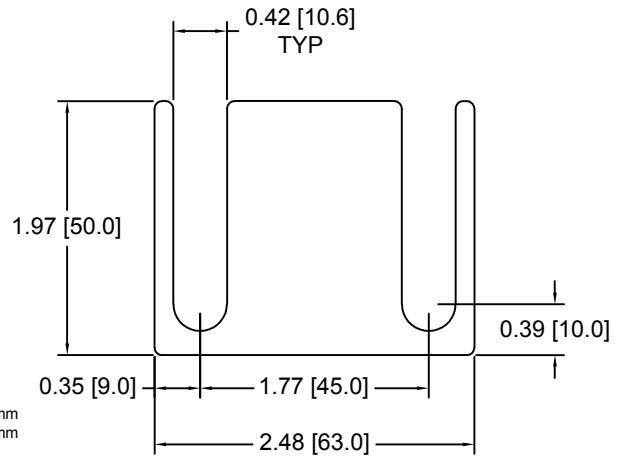
Drawings are not to scale

Metric shims over 0.25mm thick are black oxidized

Slots and holes are centered unless otherwise noted

DSC H045 Series - Individual Shims

DSC Part No.	Description	Thickness	Other part numbers
DSC H045-M025	Metric thickness shim	.25mm	ASH602
DSC H045-M050	Metric thickness shim	.50mm	ASH605
DSC H045-M100	Metric thickness shim	1.00mm	ASH610
DSC H045-M200	Metric thickness shim	2.00mm	ASH620



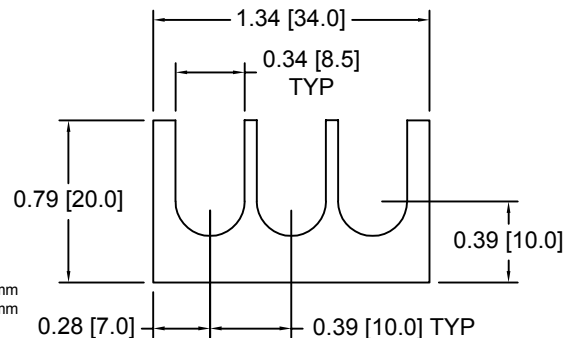
DSC H045 Series - Shim Sets

DSC Part No.	Description	Thickness	Set includes
DSC H045-M454	Four piece metric shim set	4.50mm	(1) 2.00mm, (2) 1.00mm, (1) .50mm
DSC H045-M505	Five piece metric shim set	5.00mm	(1) 2.00mm, (2) 1.00mm, (2) .50mm
DSC H045-M506	Six piece metric shim set	5.00mm	(1) 2.00mm, (2) 1.00mm, (1) .50mm, (2) .25mm
DSC H045-M507	Seven piece metric shim set	5.00mm	(1) 2.00mm, (1) 1.00mm, (3) .50mm, (2) .25mm
DSC H045-M605	Five piece metric shim set	6.00mm	(2) 2.00mm, (1) 1.00mm, (2) .50mm

DSC H046 Series - Individual Shims

DSC Part No.	Description	Thickness	Other part numbers
DSC H046-M025	Metric thickness shim	.25mm	ASH302S
DSC H046-M050	Metric thickness shim	.50mm	ASH305S
DSC H046-M100	Metric thickness shim	1.00mm	ASH310S
DSC H046-M200	Metric thickness shim	2.00mm	ASH320S

*0.25mm and 2.00mm unfinished
0.50mm yellow dichromate
1.00mm black oxide*



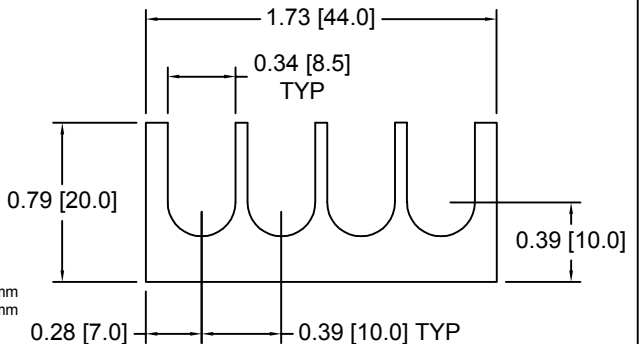
DSC H046 Series - Shim Sets

DSC Part No.	Description	Thickness	Set includes
DSC H046-M454	Four piece metric shim set	4.50mm	(1) 2.00mm, (2) 1.00mm, (1) .50mm
DSC H046-M505	Five piece metric shim set	5.00mm	(1) 2.00mm, (2) 1.00mm, (2) .50mm
DSC H046-M506	Six piece metric shim set	5.00mm	(1) 2.00mm, (2) 1.00mm, (1) .50mm, (2) .25mm
DSC H046-M507	Seven piece metric shim set	5.00mm	(1) 2.00mm, (1) 1.00mm, (3) .50mm, (2) .25mm
DSC H046-M605	Five piece metric shim set	6.00mm	(2) 2.00mm, (1) 1.00mm, (2) .50mm

DSC H047 Series - Individual Shims

DSC Part No.	Description	Thickness	Other part numbers
DSC H047-M025	Metric thickness shim	.25mm	ASH402S
DSC H047-M050	Metric thickness shim	.50mm	ASH405S
DSC H047-M100	Metric thickness shim	1.00mm	ASH410S
DSC H047-M200	Metric thickness shim	2.00mm	ASH420S

*0.25mm and 2.00mm unfinished
0.50mm yellow dichromate
1.00mm black oxide*

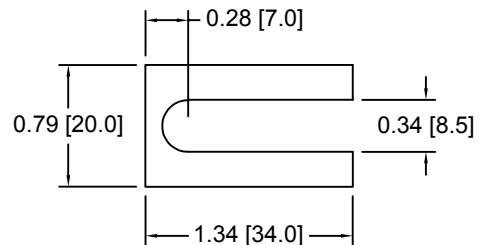


DSC H047 Series - Shim Sets

DSC Part No.	Description	Thickness	Set includes
DSC H047-M454	Four piece metric shim set	4.50mm	(1) 2.00mm, (2) 1.00mm, (1) .50mm
DSC H047-M505	Five piece metric shim set	5.00mm	(1) 2.00mm, (2) 1.00mm, (2) .50mm
DSC H047-M506	Six piece metric shim set	5.00mm	(1) 2.00mm, (2) 1.00mm, (1) .50mm, (2) .25mm
DSC H047-M507	Seven piece metric shim set	5.00mm	(1) 2.00mm, (1) 1.00mm, (3) .50mm, (2) .25mm
DSC H047-M605	Five piece metric shim set	6.00mm	(2) 2.00mm, (1) 1.00mm, (2) .50mm

DSC H048 Series - Individual Shims

DSC Part No.	Description	Thickness	Other part numbers
DSC H048-M025	Metric thickness shim	.25mm	DSC302S
DSC H048-M050	Metric thickness shim	.50mm	DSC305S
DSC H048-M100	Metric thickness shim	1.00mm	DSC310S
DSC H048-M200	Metric thickness shim	2.00mm	DSC320S



DSC H048 Series - Shim Sets

DSC Part No.	Description	Thickness	Set includes
DSC H048-M454	Four piece metric shim set	4.50mm	(1) 2.00mm, (2) 1.00mm, (1) .50mm
DSC H048-M505	Five piece metric shim set	5.00mm	(1) 2.00mm, (2) 1.00mm, (2) .50mm
DSC H048-M506	Six piece metric shim set	5.00mm	(1) 2.00mm, (2) 1.00mm, (1) .50mm, (2) .25mm
DSC H048-M507	Seven piece metric shim set	5.00mm	(1) 2.00mm, (1) 1.00mm, (3) .50mm, (2) .25mm
DSC H048-M605	Five piece metric shim set	6.00mm	(2) 2.00mm, (1) 1.00mm, (2) .50mm

Douglas Stamping Company (248) 542-3940 FAX (248) 542-6342

<http://dougstampco.com> sales@dougstampco.com