

Sets are bulk shipped

Order SHIMS by individual piece or set

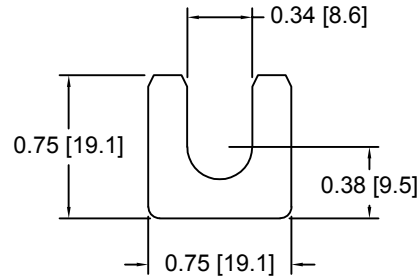
Drawings are not to scale

Metric shims over 0.25mm thick are black oxidized

Slots and holes are centered unless otherwise noted

DSCH057 Series - Individual Shims

DSC Part No.	Description	Thickness	Other part numbers
DSCH057-M025	Metric thickness shim	.25mm	GSD-A-25
DSCH057-M050	Metric thickness shim	.50mm	GSD-A-50
DSCH057-M100	Metric thickness shim	1.00mm	GSD-A-1
DSCH057-M200	Metric thickness shim	2.00mm	GSD-A-2

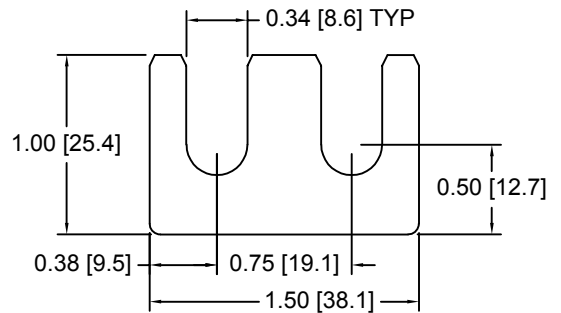


DSCH057 Series - Shim Sets

DSC Part No.	Description	Thickness	Set includes
DSCH057-M454	Four piece metric shim set	4.50mm	(1) 2.00mm, (2) 1.00mm, (1) .50mm
DSCH057-M505	Five piece metric shim set	5.00mm	(1) 2.00mm, (2) 1.00mm, (2) .50mm
DSCH057-M506	Six piece metric shim set	5.00mm	(1) 2.00mm, (2) 1.00mm, (1) .50mm, (2) .25mm
DSCH057-M507	Seven piece metric shim set	5.00mm	(1) 2.00mm, (1) 1.00mm, (3) .50mm, (2) .25mm
DSCH057-M605	Five piece metric shim set	6.00mm	(2) 2.00mm, (1) 1.00mm, (2) .50mm

DSCH058 Series - Individual Shims

DSC Part No.	Description	Thickness	Other part numbers
DSCH058-M025	Metric thickness shim	.25mm	GSD-C-25
DSCH058-M050	Metric thickness shim	.50mm	GSD-C-50
DSCH058-M100	Metric thickness shim	1.00mm	GSD-C-1
DSCH058-M200	Metric thickness shim	2.00mm	GSD-C-2

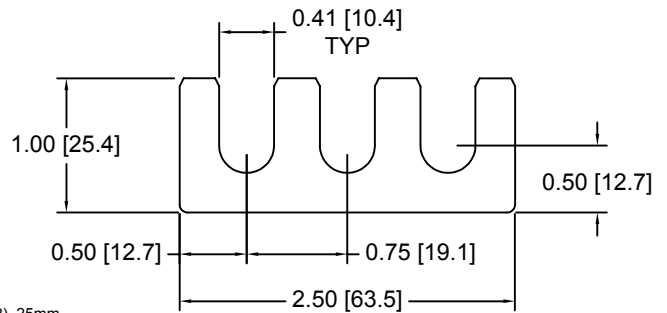


DSCH058 Series - Shim Sets

DSC Part No.	Description	Thickness	Set includes
DSCH058-M454	Four piece metric shim set	4.50mm	(1) 2.00mm, (2) 1.00mm, (1) .50mm
DSCH058-M505	Five piece metric shim set	5.00mm	(1) 2.00mm, (2) 1.00mm, (2) .50mm
DSCH058-M506	Six piece metric shim set	5.00mm	(1) 2.00mm, (2) 1.00mm, (1) .50mm, (2) .25mm
DSCH058-M507	Seven piece metric shim set	5.00mm	(1) 2.00mm, (1) 1.00mm, (3) .50mm, (2) .25mm
DSCH058-M605	Five piece metric shim set	6.00mm	(2) 2.00mm, (1) 1.00mm, (2) .50mm

DSCH059 Series - Individual Shims

DSC Part No.	Description	Thickness	Other part numbers
DSCH059-M025	Metric thickness shim	.25mm	GSD-E-25
DSCH059-M050	Metric thickness shim	.50mm	GSD-E-50
DSCH059-M100	Metric thickness shim	1.00mm	GSD-E-1
DSCH059-M200	Metric thickness shim	2.00mm	GSD-E-2

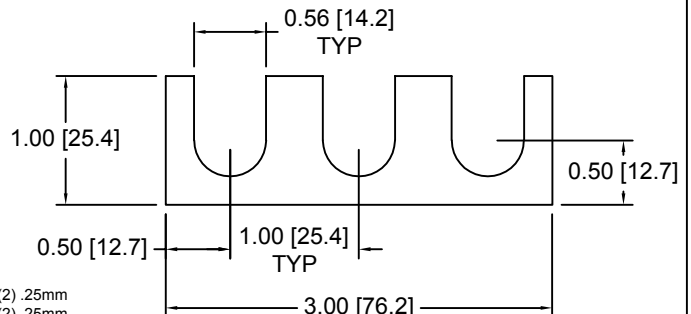


DSCH059 Series - Shim Sets

DSC Part No.	Description	Thickness	Set includes
DSCH059-M454	Four piece metric shim set	4.50mm	(1) 2.00mm, (2) 1.00mm, (1) .50mm
DSCH059-M505	Five piece metric shim set	5.00mm	(1) 2.00mm, (2) 1.00mm, (2) .50mm
DSCH059-M506	Six piece metric shim set	5.00mm	(1) 2.00mm, (2) 1.00mm, (1) .50mm, (2) .25mm
DSCH059-M507	Seven piece metric shim set	5.00mm	(1) 2.00mm, (1) 1.00mm, (3) .50mm, (2) .25mm
DSCH059-M605	Five piece metric shim set	6.00mm	(2) 2.00mm, (1) 1.00mm, (2) .50mm

DSCH060 Series - Individual Shims

DSC Part No.	Description	Thickness	Other part numbers
DSCH060-M025	Metric thickness shim	.25mm	GSD-F-25
DSCH060-M050	Metric thickness shim	.50mm	GSD-F-50
DSCH060-M100	Metric thickness shim	1.00mm	GSD-F-1
DSCH060-M200	Metric thickness shim	2.00mm	GSD-F-2



DSCH060 Series - Shim Sets

DSC Part No.	Description	Thickness	Set includes
DSCH060-M454	Four piece metric shim set	4.50mm	(1) 2.00mm, (2) 1.00mm, (1) .50mm
DSCH060-M505	Five piece metric shim set	5.00mm	(1) 2.00mm, (2) 1.00mm, (2) .50mm
DSCH060-M506	Six piece metric shim set	5.00mm	(1) 2.00mm, (2) 1.00mm, (1) .50mm, (2) .25mm
DSCH060-M507	Seven piece metric shim set	5.00mm	(1) 2.00mm, (1) 1.00mm, (3) .50mm, (2) .25mm
DSCH060-M605	Five piece metric shim set	6.00mm	(2) 2.00mm, (1) 1.00mm, (2) .50mm

Douglas Stamping Company (248) 542-3940 FAX (248) 542-6342

<http://dougstampco.com> sales@dougstampco.com