

Sets are bulk shipped

**Order SHIMS by individual piece or set**

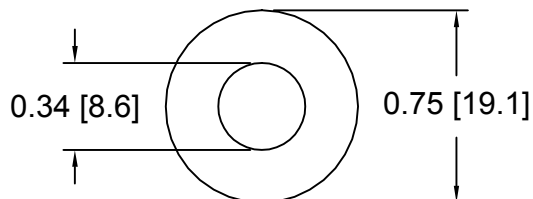
Drawings are not to scale

*Metric shims over 0.25mm thick are black oxidized*

*Slots and holes are centered unless otherwise noted*

**DSCH063 Series - Individual Shims**

DSC Part No.	Description	Thickness	Other part numbers
DSCH063-M025	Metric thickness shim	.25mm	M FS 15-AAAA
DSCH063-M050	Metric thickness shim	.50mm	M FS 15-AAA
DSCH063-M100	Metric thickness shim	1.00mm	M FS 15-AA
DSCH063-M200	Metric thickness shim	2.00mm	M FS 15-A
DSCH063-E015	Inch thickness shim	.015 inch	FS 15-AAA
DSCH063-E032	Inch thickness shim	.031 inch	FS 15-AA
DSCH063-E062	Inch thickness shim	.062 inch	FS 15-A

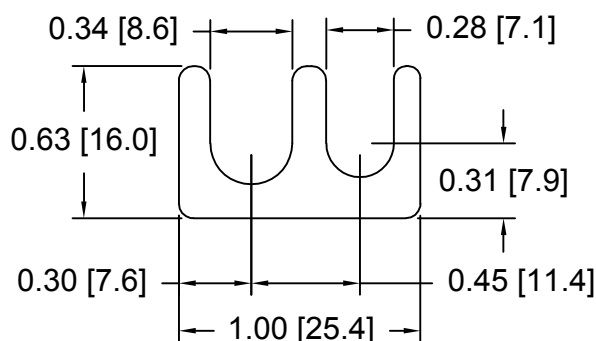


**DSCH063 Series - Shim Sets**

DSC Part No.	Description	Thickness	Set includes
DSCH063-M454	Four piece metric shim set	4.50mm	(1) 2.00mm, (2) 1.00mm, (1) .50mm
DSCH063-M505	Five piece metric shim set	5.00mm	(1) 2.00mm, (2) 1.00mm, (2) .50mm
DSCH063-M506	Six piece metric shim set	5.00mm	(1) 2.00mm, (2) 1.00mm, (1) .50mm, (2) .25mm
DSCH063-M507	Seven piece metric shim set	5.00mm	(1) 2.00mm, (1) 1.00mm, (3) .50mm, (2) .25mm
DSCH063-M605	Five piece metric shim set	6.00mm	(2) 2.00mm, (1) 1.00mm, (2) .50mm
DSCH063-E255	Five piece inch shim set	.250 inch	(3) .062 inch, (2) .031 inch

**DSCH064 Series - Individual Shims**

DSC Part No.	Description	Thickness	Other part numbers
DSCH064-M025	Metric thickness shim	.25mm	M FS 15-BBBB
DSCH064-M050	Metric thickness shim	.50mm	M FS 15-BBB
DSCH064-M100	Metric thickness shim	1.00mm	M FS 15-BB
DSCH064-M200	Metric thickness shim	2.00mm	M FS 15-B
DSCH064-E015	Inch thickness shim	.015 inch	FS 15-BBB
DSCH064-E032	Inch thickness shim	.031 inch	FS 15-BB
DSCH064-E062	Inch thickness shim	.062 inch	FS 15-B

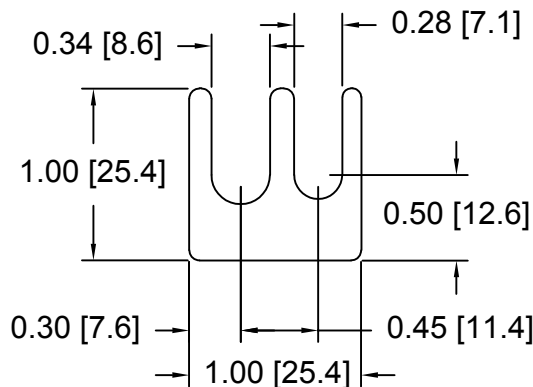


**DSCH064 Series - Shim Sets**

DSC Part No.	Description	Thickness	Set includes
DSCH064-M454	Four piece metric shim set	4.50mm	(1) 2.00mm, (2) 1.00mm, (1) .50mm
DSCH064-M505	Five piece metric shim set	5.00mm	(1) 2.00mm, (2) 1.00mm, (2) .50mm
DSCH064-M506	Six piece metric shim set	5.00mm	(1) 2.00mm, (2) 1.00mm, (1) .50mm, (2) .25mm
DSCH064-M507	Seven piece metric shim set	5.00mm	(1) 2.00mm, (1) 1.00mm, (3) .50mm, (2) .25mm
DSCH064-M605	Five piece metric shim set	6.00mm	(2) 2.00mm, (1) 1.00mm, (2) .50mm
DSCH064-E255	Five piece inch shim set	.250 inch	(3) .062 inch, (2) .031 inch

**DSCH065 Series - Individual Shims**

DSC Part No.	Description	Thickness	Other part numbers
DSCH065-M025	Metric thickness shim	.25mm	M FS 15-CCCC
DSCH065-M050	Metric thickness shim	.50mm	M FS 15-CCC
DSCH065-M100	Metric thickness shim	1.00mm	M FS 15-CC
DSCH065-M200	Metric thickness shim	2.00mm	M FS 15-C
DSCH065-E015	Inch thickness shim	.015 inch	FS 15-CCC
DSCH065-E032	Inch thickness shim	.031 inch	FS 15-CC
DSCH065-E062	Inch thickness shim	.062 inch	FS 15-C

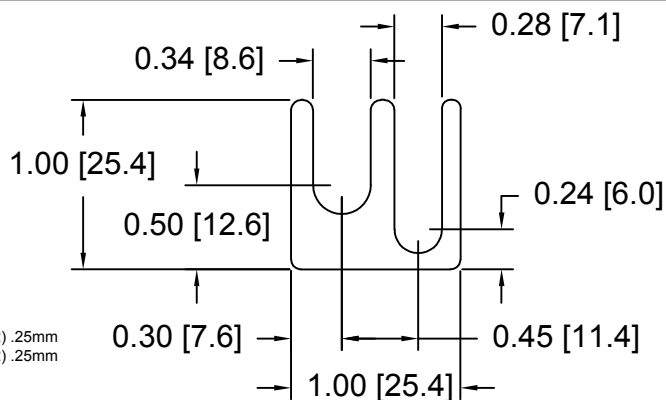


**DSCH065 Series - Shim Sets**

DSC Part No.	Description	Thickness	Set includes
DSCH065-M454	Four piece metric shim set	4.50mm	(1) 2.00mm, (2) 1.00mm, (1) .50mm
DSCH065-M505	Five piece metric shim set	5.00mm	(1) 2.00mm, (2) 1.00mm, (2) .50mm
DSCH065-M506	Six piece metric shim set	5.00mm	(1) 2.00mm, (1) 1.00mm, (1) .50mm, (2) .25mm
DSCH065-M507	Seven piece metric shim set	5.00mm	(1) 2.00mm, (1) 1.00mm, (3) .50mm, (2) .25mm
DSCH065-M605	Five piece metric shim set	6.00mm	(2) 2.00mm, (1) 1.00mm, (2) .50mm
DSCH065-E255	Five piece inch shim set	.250 inch	(3) .062 inch, (2) .031 inch

**DSCH066 Series - Individual Shims**

DSC Part No.	Description	Thickness	Other part numbers
DSCH066-M025	Metric thickness shim	.25mm	M FS 15-DDDD
DSCH066-M050	Metric thickness shim	.50mm	M FS 15-DDD
DSCH066-M100	Metric thickness shim	1.00mm	M FS 15-DD
DSCH066-M200	Metric thickness shim	2.00mm	M FS 15-D
DSCH066-E015	Inch thickness shim	.015 inch	FS 15-DDD
DSCH066-E032	Inch thickness shim	.031 inch	FS 15-DD
DSCH066-E062	Inch thickness shim	.062 inch	FS 15-D



**DSCH066 Series - Shim Sets**

DSC Part No.	Description	Thickness	Set includes
DSCH066-M454	Four piece metric shim set	4.50mm	(1) 2.00mm, (2) 1.00mm, (1) .50mm
DSCH066-M505	Five piece metric shim set	5.00mm	(1) 2.00mm, (2) 1.00mm, (2) .50mm
DSCH066-M506	Six piece metric shim set	5.00mm	(1) 2.00mm, (2) 1.00mm, (1) .50mm, (2) .25mm
DSCH066-M507	Seven piece metric shim set	5.00mm	(1) 2.00mm, (1) 1.00mm, (3) .50mm, (2) .25mm
DSCH066-M605	Five piece metric shim set	6.00mm	(2) 2.00mm, (1) 1.00mm, (2) .50mm
DSCH066-E255	Five piece inch shim set	.250 inch	(3) .062 inch, (2) .031 inch

Douglas Stamping Company (248) 542-3940 FAX (248) 542-6342

<http://dougstampco.com> [sales@dougstampco.com](mailto:sales@dougstampco.com)