

Sets are bulk shipped

Order SHIMS by individual piece or set

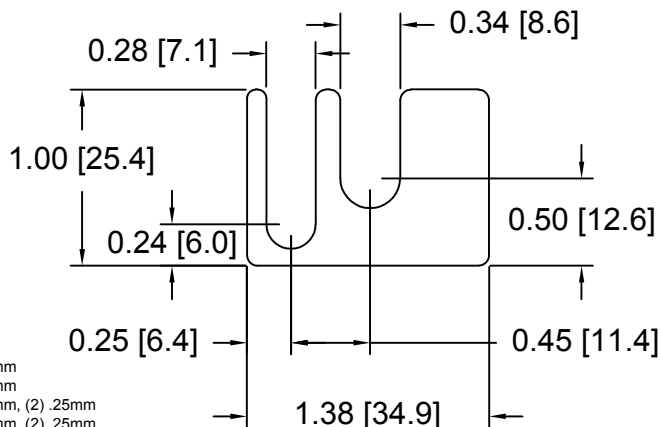
Drawings are not to scale

Metric shims over 0.25mm thick are black oxidized

Slots and holes are centered unless otherwise noted

DSCH067 Series - Individual Shims

DSC Part No.	Description	Thickness	Other part numbers
DSCH067-M025	Metric thickness shim	.25mm	M FS 15-EEEE
DSCH067-M050	Metric thickness shim	.50mm	M FS 15-EEE
DSCH067-M100	Metric thickness shim	1.00mm	M FS 15-EE
DSCH067-M200	Metric thickness shim	2.00mm	M FS 15-E
DSCH067-E015	Inch thickness shim	.015 inch	FS 15-EEE
DSCH067-E032	Inch thickness shim	.031 inch	FS 15-EE
DSCH067-E062	Inch thickness shim	.062 inch	FS 15-E

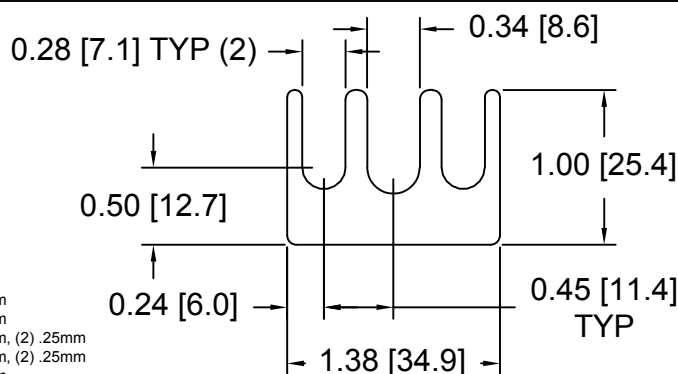


DSCH067 Series - Shim Sets

DSC Part No.	Description	Thickness	Set includes
DSCH067-M454	Four piece metric shim set	4.50mm	(1) 2.00mm, (2) 1.00mm, (1) .50mm
DSCH067-M505	Five piece metric shim set	5.00mm	(1) 2.00mm, (2) 1.00mm, (2) .50mm
DSCH067-M506	Six piece metric shim set	5.00mm	(1) 2.00mm, (2) 1.00mm, (1) .50mm, (2) .25mm
DSCH067-M507	Seven piece metric shim set	5.00mm	(1) 2.00mm, (1) 1.00mm, (3) .50mm, (2) .25mm
DSCH067-M605	Five piece metric shim set	6.00mm	(2) 2.00mm, (1) 1.00mm, (2) .50mm
DSCH067-E255	Five piece inch shim set	.250 inch	(3) .062 inch, (2) .031 inch

DSCH068 Series - Individual Shims

DSC Part No.	Description	Thickness	Other part numbers
DSCH068-M025	Metric thickness shim	.25mm	M FS 15-FFFF
DSCH068-M050	Metric thickness shim	.50mm	M FS 15-FFF
DSCH068-M100	Metric thickness shim	1.00mm	M FS 15-FF
DSCH068-M200	Metric thickness shim	2.00mm	M FS 15-F
DSCH068-E015	Inch thickness shim	.015 inch	FS 15-FFF
DSCH068-E032	Inch thickness shim	.031 inch	FS 15-FF
DSCH068-E062	Inch thickness shim	.062 inch	FS 15-F

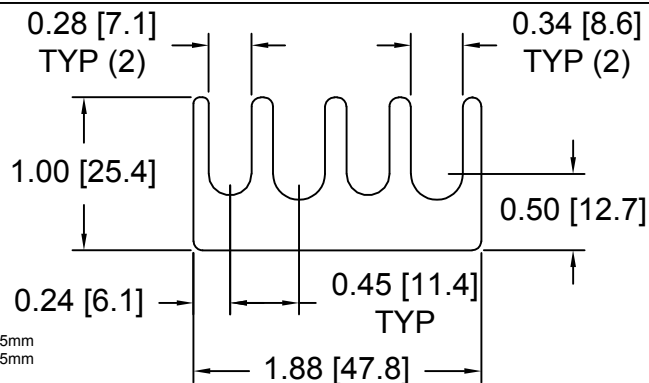


DSCH068 Series - Shim Sets

DSC Part No.	Description	Thickness	Set includes
DSCH068-M454	Four piece metric shim set	4.50mm	(1) 2.00mm, (2) 1.00mm, (1) .50mm
DSCH068-M505	Five piece metric shim set	5.00mm	(1) 2.00mm, (2) 1.00mm, (2) .50mm
DSCH068-M506	Six piece metric shim set	5.00mm	(1) 2.00mm, (2) 1.00mm, (1) .50mm, (2) .25mm
DSCH068-M507	Seven piece metric shim set	5.00mm	(1) 2.00mm, (1) 1.00mm, (3) .50mm, (2) .25mm
DSCH068-M605	Five piece metric shim set	6.00mm	(2) 2.00mm, (1) 1.00mm, (2) .50mm
DSCH068-E255	Five piece inch shim set	.250 inch	(3) .062 inch, (2) .031 inch

DSCH069 Series - Individual Shims

DSC Part No.	Description	Thickness	Other part numbers
DSCH069-M025	Metric thickness shim	.25mm	M FS 15-GGGG
DSCH069-M050	Metric thickness shim	.50mm	M FS 15-GGG
DSCH069-M100	Metric thickness shim	1.00mm	M FS 15-GG
DSCH069-M200	Metric thickness shim	2.00mm	M FS 15-G
DSCH069-E015	Inch thickness shim	.015 inch	FS 15-GGG
DSCH069-E032	Inch thickness shim	.031 inch	FS 15-GG
DSCH069-E062	Inch thickness shim	.062 inch	FS 15-G

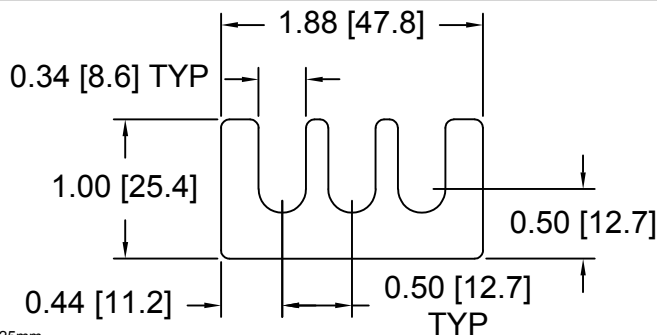


DSCH069 Series - Shim Sets

DSC Part No.	Description	Thickness	Set includes
DSCH069-M454	Four piece metric shim set	4.50mm	(1) 2.00mm, (2) 1.00mm, (1) .50mm
DSCH069-M505	Five piece metric shim set	5.00mm	(1) 2.00mm, (2) 1.00mm, (2) .50mm
DSCH069-M506	Six piece metric shim set	5.00mm	(1) 2.00mm, (2) 1.00mm, (1) .50mm, (2) .25mm
DSCH069-M507	Seven piece metric shim set	5.00mm	(1) 2.00mm, (1) 1.00mm, (3) .50mm, (2) .25mm
DSCH069-M605	Five piece metric shim set	6.00mm	(2) 2.00mm, (1) 1.00mm, (2) .50mm
DSCH069-E255	Five piece inch shim set	.250 inch	(3) .062 inch, (2) .031 inch

DSCH070 Series - Individual Shims

DSC Part No.	Description	Thickness	Other part numbers
DSCH070-M025	Metric thickness shim	.25mm	M FS 15-HHHH, GSD-D-25
DSCH070-M050	Metric thickness shim	.50mm	M FS 15-HHH, GSD-D-50
DSCH070-M100	Metric thickness shim	1.00mm	M FS 15-HH, GSD-D-1
DSCH070-M200	Metric thickness shim	2.00mm	M FS 15-H, GSD-D-2
DSCH070-E015	Inch thickness shim	.015 inch	FS 15-HHH
DSCH070-E032	Inch thickness shim	.031 inch	FS 15-HH
DSCH070-E062	Inch thickness shim	.062 inch	FS 15-H



DSCH070 Series - Shim Sets

DSC Part No.	Description	Thickness	Set includes
DSCH070-M454	Four piece metric shim set	4.50mm	(1) 2.00mm, (2) 1.00mm, (1) .50mm
DSCH070-M505	Five piece metric shim set	5.00mm	(1) 2.00mm, (2) 1.00mm, (2) .50mm
DSCH070-M506	Six piece metric shim set	5.00mm	(1) 2.00mm, (2) 1.00mm, (1) .50mm, (2) .25mm
DSCH070-M507	Seven piece metric shim set	5.00mm	(1) 2.00mm, (1) 1.00mm, (3) .50mm, (2) .25mm
DSCH070-M605	Five piece metric shim set	6.00mm	(2) 2.00mm, (1) 1.00mm, (2) .50mm
DSCH070-E255	Five piece inch shim set	.250 inch	(3) .062 inch, (2) .031 inch

Douglas Stamping Company (248) 542-3940 FAX (248) 542-6342

<http://dougstampco.com> sales@dougstampco.com