

# Shims

Drawings are not to scale

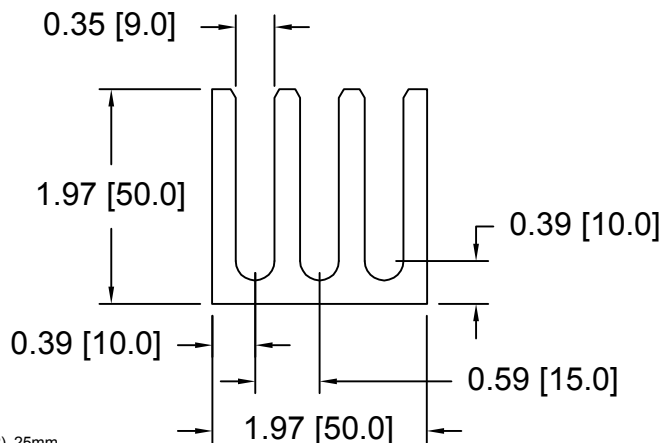
Sets are bulk shipped

Slots and holes are centered unless otherwise noted

Most spacers are etched on the side with thickness

## DSCH115 Series Shims

DSC Part No.	Thickness	Other part numbers
DSCH115-M010	0.10MM	11-38D 495 551/6, 5 279 665
DSCH115-M020	0.20MM	11-38D 495 551/5
DSCH115-M025	0.25MM	
DSCH115-M050	0.50MM	11-38D 495 551/4, 5 279 666
DSCH115-M100	1.00MM	11-38D 495 551/3, 5 279 667
DSCH115-M200	2.00MM	11-38D 495 551/2, 5 279 668
DSCH115-M500	5.00MM	11-38D 495 551/1

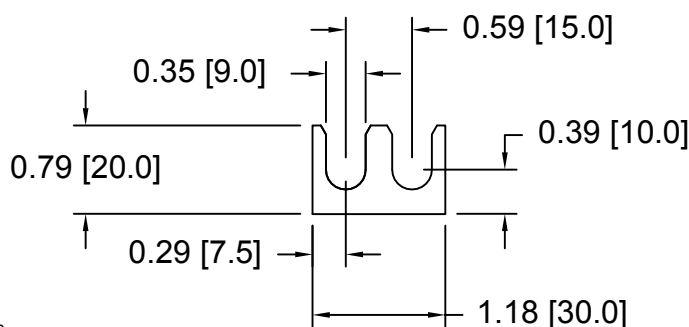


## DSCH115 Series - Shim Sets

DSC Part No.	Description	Thickness	Set includes
DSCH115-M505	Five piece metric shim set	5.00mm	(1) 2.00mm, (2) 1.00mm, (2) .50mm
DSCH115-M507	Seven piece metric shim set	5.00mm	(1) 2.00mm, (1) 1.00mm, (3) .50mm, (2) .25mm

## DSCH116 Series Shims

DSC Part No.	Thickness	Other part numbers
DSCH116-M010	0.10MM	3 699 426
DSCH116-M025	0.25MM	
DSCH116-M050	0.50MM	3 699 427
DSCH116-M100	1.00MM	3 699 428
DSCH116-M200	2.00MM	3 699 429

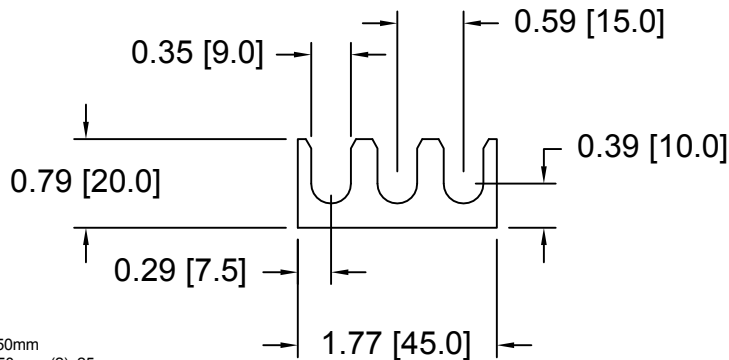


## DSCH116 Series - Shim Sets

DSC Part No.	Description	Thickness	Set includes
DSCH116-M505	Five piece metric shim set	5.00mm	(1) 2.00mm, (2) 1.00mm, (2) .50mm
DSCH116-M507	Seven piece metric shim set	5.00mm	(1) 2.00mm, (1) 1.00mm, (3) .50mm, (2) .25mm

## DSCH117 Series Shims

DSC Part No.	Thickness	Other part numbers
DSCH117-M010	0.10MM	3 699 430
DSCH117-M025	0.25MM	
DSCH117-M050	0.50MM	3 699 431
DSCH117-M100	1.00MM	3 699 432
DSCH117-M200	2.00MM	3 699 433

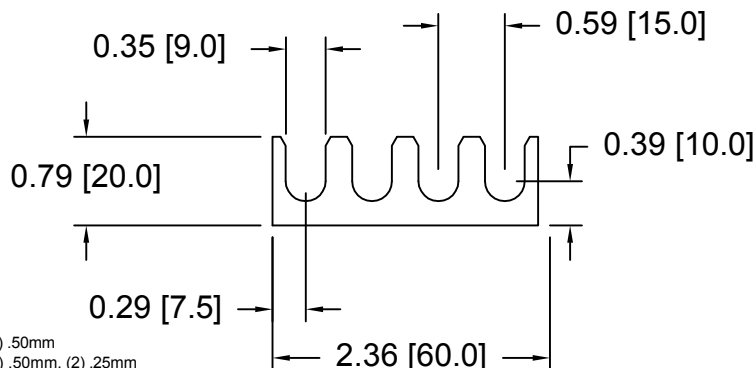


## DSCH117 Series - Shim Sets

DSC Part No.	Description	Thickness	Set includes
DSCH117-M505	Five piece metric shim set	5.00mm	(1) 2.00mm, (2) 1.00mm, (2) .50mm
DSCH117-M507	Seven piece metric shim set	5.00mm	(1) 2.00mm, (1) 1.00mm, (3) .50mm, (2) .25mm

## DSCH118 Series Shims

DSC Part No.	Thickness	Other part numbers
DSCH118-M010	0.10MM	3 699 434
DSCH118-M025	0.25MM	
DSCH118-M050	0.50MM	3 699 435
DSCH118-M100	1.00MM	3 699 436
DSCH118-M200	2.00MM	3 699 437



## DSCH118 Series - Shim Sets

DSC Part No.	Description	Thickness	Set includes
DSCH118-M505	Five piece metric shim set	5.00mm	(1) 2.00mm, (2) 1.00mm, (2) .50mm
DSCH118-M507	Seven piece metric shim set	5.00mm	(1) 2.00mm, (1) 1.00mm, (3) .50mm, (2) .25mm

Douglas Stamping Company (248) 542-3940 FAX (248) 542-6342

<http://dougstampco.com> [sales@dougstampco.com](mailto:sales@dougstampco.com)