

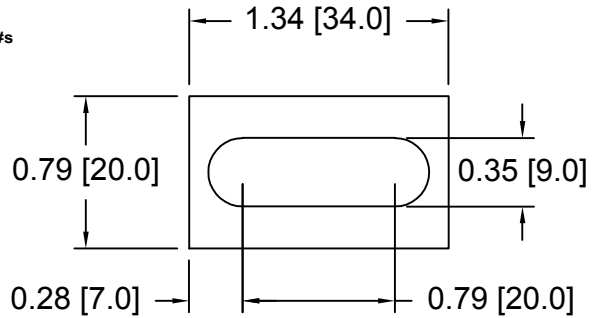
SPACERS

Drawings are not to scale

Metric spacers are black oxidized Slots and holes are centered unless otherwise noted
Most spacers are etched on the side with thickness

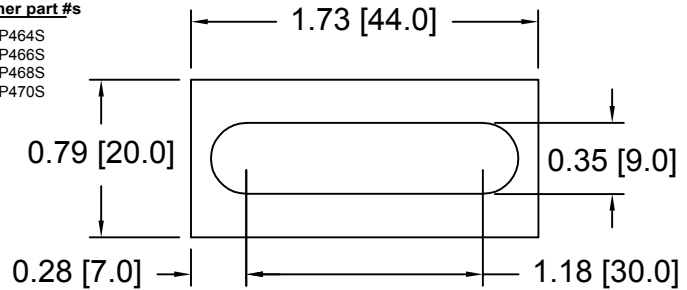
DSCP015 Series Spacers

DSC Part No.	Thickness	Other part #s	DSC Part No.	Thickness	Other part #s
DSCP015-M300	3.00mm	ASP330S	DSCP015-M640	6.40mm	ASP364S
DSCP015-M320	3.20mm	ASP332S	DSCP015-M660	6.60mm	ASP366S
DSCP015-M340	3.40mm	ASP334S	DSCP015-M680	6.80mm	ASP368S
DSCP015-M360	3.60mm	ASP336S	DSCP015-M700	7.00mm	ASP370S
DSCP015-M380	3.80mm	ASP338S			
DSCP015-M400	4.00mm	ASP340S			
DSCP015-M420	4.20mm	ASP342S			
DSCP015-M440	4.40mm	ASP344S			
DSCP015-M460	4.60mm	ASP346S			
DSCP015-M480	4.80mm	ASP348S			
DSCP015-M500	5.00mm	ASP350S			
DSCP015-M520	5.20mm	ASP352S			
DSCP015-M540	5.40mm	ASP354S			
DSCP015-M560	5.60mm	ASP356S			
DSCP015-M580	5.80mm	ASP358S			
DSCP015-M600	6.00mm	ASP360S			
DSCP015-M620	6.20mm	ASP362S			



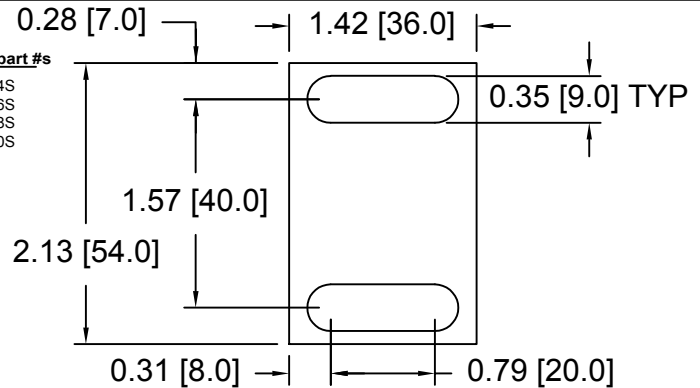
DSCP016 Series Spacers

DSC Part No.	Thickness	Other part #s	DSC Part No.	Thickness	Other part #s
DSCP016-M300	3.00mm	ASP430S	DSCP016-M640	6.40mm	ASP464S
DSCP016-M320	3.20mm	ASP432S	DSCP016-M660	6.60mm	ASP466S
DSCP016-M340	3.40mm	ASP434S	DSCP016-M680	6.80mm	ASP468S
DSCP016-M360	3.60mm	ASP436S	DSCP016-M700	7.00mm	ASP470S
DSCP016-M380	3.80mm	ASP438S			
DSCP016-M400	4.00mm	ASP440S			
DSCP016-M420	4.20mm	ASP442S			
DSCP016-M440	4.40mm	ASP444S			
DSCP016-M460	4.60mm	ASP446S			
DSCP016-M480	4.80mm	ASP448S			
DSCP016-M500	5.00mm	ASP450S			
DSCP016-M520	5.20mm	ASP452S			
DSCP016-M540	5.40mm	ASP454S			
DSCP016-M560	5.60mm	ASP456S			
DSCP016-M580	5.80mm	ASP458S			
DSCP016-M600	6.00mm	ASP460S			
DSCP016-M620	6.20mm	ASP462S			



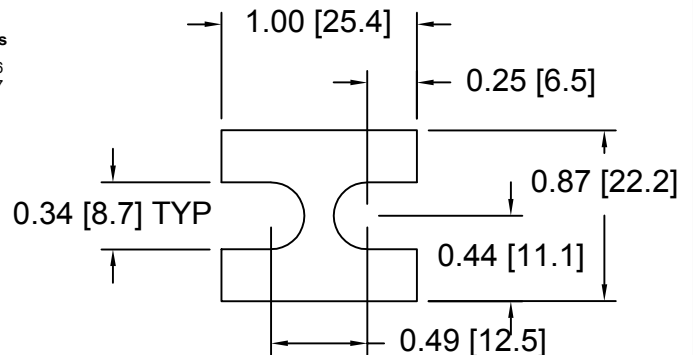
DSCP017 Series Spacers

DSC Part No.	Thickness	Other part #s	DSC Part No.	Thickness	Other part #s
DSCP017-M300	3.00mm	ASP630S	DSCP017-M640	6.40mm	ASP664S
DSCP017-M320	3.20mm	ASP632S	DSCP017-M660	6.60mm	ASP666S
DSCP017-M340	3.40mm	ASP634S	DSCP017-M680	6.80mm	ASP668S
DSCP017-M360	3.60mm	ASP636S	DSCP017-M700	7.00mm	ASP670S
DSCP017-M380	3.80mm	ASP638S			
DSCP017-M400	4.00mm	ASP640S			
DSCP017-M420	4.20mm	ASP642S			
DSCP017-M440	4.40mm	ASP644S			
DSCP017-M460	4.60mm	ASP646S			
DSCP017-M480	4.80mm	ASP648S			
DSCP017-M500	5.00mm	ASP650S			
DSCP017-M520	5.20mm	ASP652S			
DSCP017-M540	5.40mm	ASP654S			
DSCP017-M560	5.60mm	ASP656S			
DSCP017-M580	5.80mm	ASP658S			
DSCP017-M600	6.00mm	ASP660S			
DSCP017-M620	6.20mm	ASP662S			



DSCP018 Series Spacers

DSC Part No.	Thickness	Other part #s	DSC Part No.	Thickness	Other part #s
DSCP018-M050	0.50mm	FSD 40774-45	DSCP018-M575	5.75mm	FSD 40774-66
DSCP018-M100	1.00mm	FSD 40774-47	DSCP018-M600	6.00mm	FSD 40774-67
DSCP018-M200	2.00mm	FSD 40774-51			
DSCP018-M225	2.25mm	FSD 40774-52			
DSCP018-M250	2.50mm	FSD 40774-53			
DSCP018-M275	2.75mm	FSD 40774-54			
DSCP018-M300	3.00mm	FSD 40774-55			
DSCP018-M325	3.25mm	FSD 40774-56			
DSCP018-M350	3.50mm	FSD 40774-57			
DSCP018-M375	3.75mm	FSD 40774-58			
DSCP018-M400	4.00mm	FSD 40774-59			
DSCP018-M425	4.25mm	FSD 40774-60			
DSCP018-M450	4.50mm	FSD 40774-61			
DSCP018-M475	4.75mm	FSD 40774-62			
DSCP018-M500	5.00mm	FSD 40774-63			
DSCP018-M525	5.25mm	FSD 40774-64			
DSCP018-M550	5.50mm	FSD 40774-65			



Douglas Stamping Company (248) 542-3940 FAX (248) 542-6342

<http://dougstampco.com> sales@dougstampco.com