

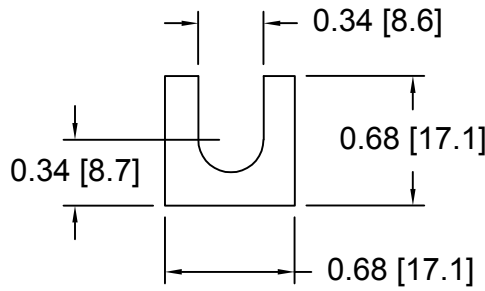
SPACERS

Drawings are not to scale

Metric spacers are black oxidized Slots and holes are centered unless otherwise noted
Most spacers are etched on the side with thickness

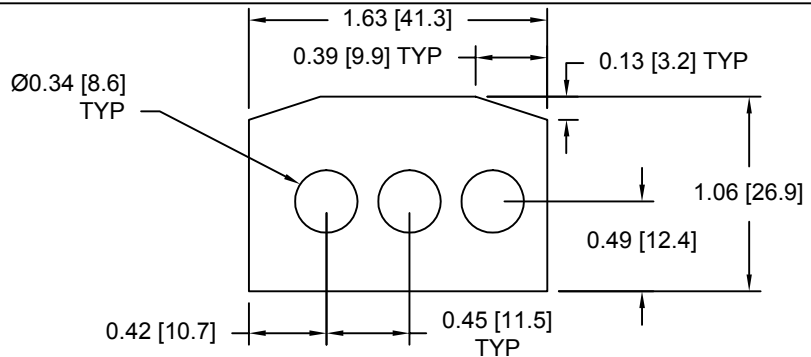
DSCP027 Series Spacers

DSC Part No.	Thickness	Other part numbers
DSCP027-M025	0.25mm	FSD 41238-51
DSCP027-M050	0.50mm	FSD 41238-52
DSCP027-M100	1.00mm	FSD 41238-53
DSCP027-M200	2.00mm	FSD 41238-54
DSCP027-M300	3.00mm	FSD 41238-55
DSCP027-M400	4.00mm	FSD 41238-56
DSCP027-M500	5.00mm	FSD 41238-57



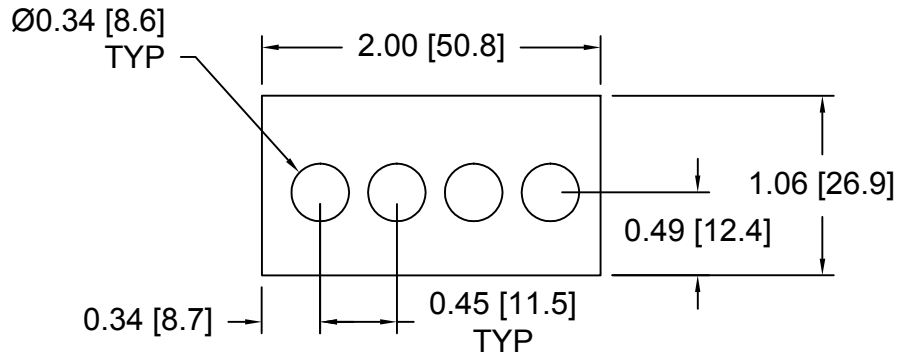
DSCP028 Series Spacers

DSC Part No.	Thickness	Other part numbers
DSCP028-M050	0.50mm	41-502-1901, SAS 32740-05
DSCP028-M100	1.00mm	41-502-1902, SAS 32740-10
DSCP028-M150	1.50mm	41-502-1903, SAS 32740-15
DSCP028-M200	2.00mm	41-502-1904, SAS 32740-20
DSCP028-M250	2.50mm	41-502-1905, SAS 32740-25
DSCP028-M300	3.00mm	41-502-1906, SAS 32740-30
DSCP028-M350	3.50mm	41-502-1907, SAS 32740-35
DSCP028-M400	4.00mm	41-502-1908, SAS 32740-40
DSCP028-M450	4.50mm	41-502-1909, SAS 32740-45
DSCP028-M500	5.00mm	41-502-1910, SAS 32740-50
DSCP028-M550	5.50mm	41-502-1911, SAS 32740-55
DSCP028-M600	6.00mm	41-502-1912, SAS 32740-60
DSCP028-M650	6.50mm	41-502-1913, SAS 32740-65
DSCP028-M700	7.00mm	41-502-1914, SAS 32740-70
DSCP028-M750	7.50mm	41-502-1915, SAS 32740-75
DSCP028-M800	8.00mm	41-502-1916, SAS 32740-80



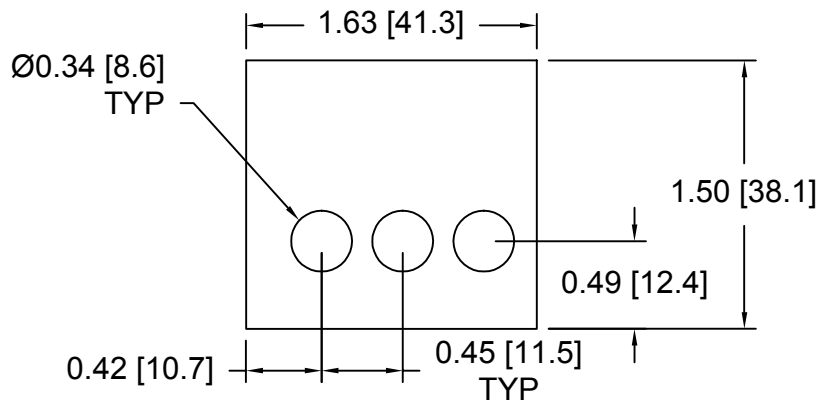
DSCP029 Series Spacers

DSC Part No.	Thickness	Other part numbers
DSCP029-M050	0.50mm	41-502-1921, SAS 42751-05
DSCP029-M100	1.00mm	41-502-1922, SAS 42751-10
DSCP029-M150	1.50mm	41-502-1923, SAS 42751-15
DSCP029-M200	2.00mm	41-502-1924, SAS 42751-20
DSCP029-M250	2.50mm	41-502-1925, SAS 42751-25
DSCP029-M300	3.00mm	41-502-1926, SAS 42751-30
DSCP029-M350	3.50mm	41-502-1927, SAS 42751-35
DSCP029-M400	4.00mm	41-502-1928, SAS 42751-40
DSCP029-M450	4.50mm	41-502-1929, SAS 42751-45
DSCP029-M500	5.00mm	41-502-1930, SAS 42751-50
DSCP029-M550	5.50mm	41-502-1931, SAS 42751-55
DSCP029-M600	6.00mm	41-502-1932, SAS 42751-60
DSCP029-M650	6.50mm	41-502-1933, SAS 42751-65
DSCP029-M700	7.00mm	41-502-1934, SAS 42751-70
DSCP029-M750	7.50mm	41-502-1935, SAS 42751-75
DSCP029-M800	8.00mm	41-502-1936, SAS 42751-80



DSCP030 Series Spacers

DSC Part No.	Thickness	Other part numbers
DSCP030-M050	0.50mm	41-502-1941, SAS 33840-05
DSCP030-M100	1.00mm	41-502-1942, SAS 33840-10
DSCP030-M150	1.50mm	41-502-1943, SAS 33840-15
DSCP030-M200	2.00mm	41-502-1944, SAS 33840-20
DSCP030-M250	2.50mm	41-502-1945, SAS 33840-25
DSCP030-M300	3.00mm	41-502-1946, SAS 33840-30
DSCP030-M350	3.50mm	41-502-1947, SAS 33840-35
DSCP030-M400	4.00mm	41-502-1948, SAS 33840-40
DSCP030-M450	4.50mm	41-502-1949, SAS 33840-45
DSCP030-M500	5.00mm	41-502-1950, SAS 33840-50
DSCP030-M550	5.50mm	41-502-1951, SAS 33840-55
DSCP030-M600	6.00mm	41-502-1952, SAS 33840-60
DSCP030-M650	6.50mm	41-502-1953, SAS 33840-65
DSCP030-M700	7.00mm	41-502-1954, SAS 33840-70
DSCP030-M750	7.50mm	41-502-1955, SAS 33840-75
DSCP030-M800	8.00mm	41-502-1956, SAS 33840-80



Douglas Stamping Company (248) 542-3940 FAX (248) 542-6342

<http://dougstampco.com> sales@dougstampco.com