

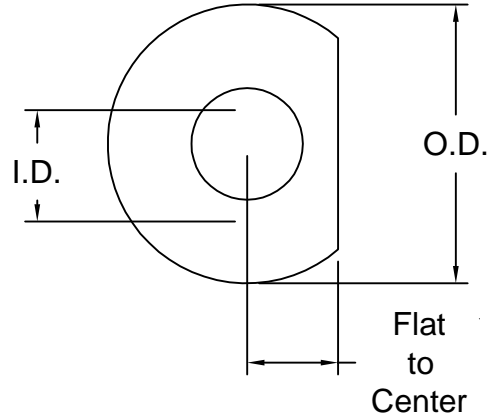
WELD WASHERS, SERRATED WASHERS, LINKS

Drawings are not to scale

Slots and holes are centered unless otherwise noted

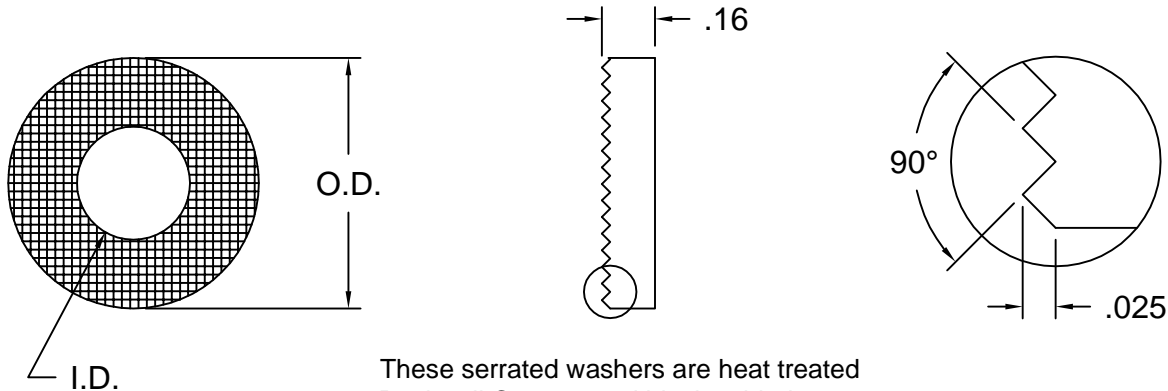
DSCD Series Weld Washers

DSC Part No.	I.D.	O.D.	Flat to Center	Thickness	Material/Plating	Other part numbers
DSCD001-E125	0.25 inch	0.75 inch	0.25 inch	0.13 inch	steel	DSC-D-14
DSCD002-E125	0.31 inch	0.88 inch	0.31 inch	0.13 inch	steel	DSC-D-516
DSCD003-E250	0.38 inch	1.00 inch	0.38 inch	0.25 inch	steel	56ZF24981-38
DSCD004-E140	0.38 inch	1.00 inch	0.38 inch	0.14 inch	steel	56ZM 2359-2, DSC-D-38
DSCD005-E140	0.38 inch	1.00 inch	0.38 inch	0.14 inch	steel	FSD 14102
DSCD006-E140	0.38 inch	1.00 inch	0.38 inch	0.14 inch	stainless	FSD 14102SS
DSCD007-E190	0.50 inch	1.25 inch	0.38 inch	0.19 inch	steel	56ZM 2359-3, DSC-D-12
DSCD008-E190	0.50 inch	1.25 inch	0.38 inch	0.19 inch	steel	FSD 14103
DSCD009-E190	0.50 inch	1.25 inch	0.50 inch	0.19 inch	stainless	FSD 14103SS
DSCD010-E190	0.50 inch	1.25 inch	0.50 inch	0.19 inch	steel/zinc	FSD 14103Z
DSCD011-E250	0.50 inch	1.25 inch	0.50 inch	0.25 inch	steel	56ZF24981-12
DSCD018-E310	0.50 inch	1.38 inch	0.50 inch	0.31 inch	steel	P111005
DSCD012-E190	0.63 inch	1.38 inch	0.50 inch	0.19 inch	steel	DSC-D-58
DSCD013-E250	0.63 inch	1.50 inch	0.50 inch	0.25 inch	steel	56ZF24981-58
DSCD014-E250	0.75 inch	1.50 inch	0.56 inch	0.25 inch	steel	56ZF24981-34
DSCD015-E250	0.75 inch	1.50 inch	0.63 inch	0.25 inch	steel	FSD 14239, DSC-D-34
DSCD016-E250	0.88 inch	1.75 inch	0.63 inch	0.25 inch	steel	DSC-D-78
DSCD017-E310	1.00 inch	2.00 inch	0.69 inch	0.31 inch	steel	DSC-D-100
DSCD101-M300	6.4mm	19.0mm	6.4mm	3.0mm	steel	FSD 41341, DSC-D-M6
DSCD102-M300	6.4mm	19.0mm	6.4mm	3.0mm	phenolic	DSC-D-M6P
DSCD103-M300	8.1mm	22.4mm	8.0mm	3.0mm	steel	FSD 41342, DSC-D-M8
DSCD104-M300	8.1mm	22.4mm	8.0mm	3.0mm	phenolic	DSC-D-M8P
DSCD105-M300	10.1mm	25.4mm	10.0mm	3.0mm	steel	FSD 41343, DSC-D-M10
DSCD106-M300	10.1mm	25.4mm	10.0mm	3.0mm	phenolic	DSC-D-M10P
DSCD107-M400	12.1mm	31.8mm	12.0mm	4.0mm	steel	FSD 41344, DSC-D-M12
DSCD108-M400	12.1mm	31.8mm	12.0mm	4.0mm	phenolic	DSC-D-M12P
DSCD111-M480	14.7mm	34.8mm	12.9mm	4.8mm	steel	DSC-D-M14
DSCD109-M480	16.7mm	38.1mm	15.0mm	4.8mm	steel	DSC-D-M16
DSCD110-M635	20.3mm	44.5mm	19.0mm	6.4mm	steel	DSC-D-M20



DSCS Series Serrated Washers (dimensions in inches)

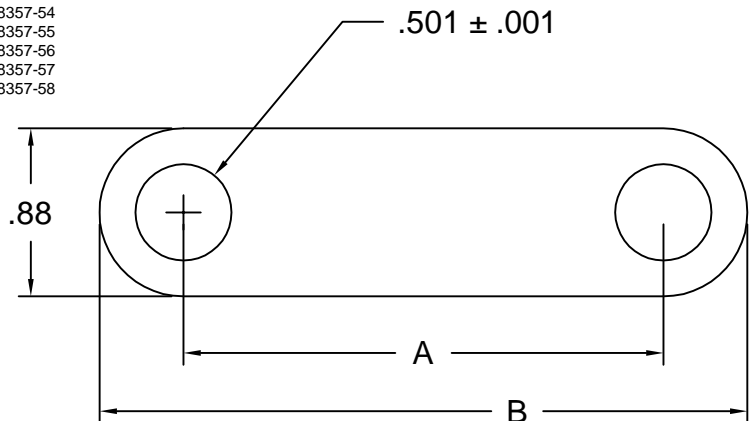
DSC Part No.	I.D.	O.D.	Thickness	Material	Other part numbers
DSCS001-E160	0.27	0.62	0.16	steel	FSD 14040-3
DSCS002-E160	0.33	0.75	0.16	steel	FSD 14040-4
DSCS003-E160	0.39	0.88	0.16	steel	FSD 14040-5
DSCS004-E160	0.52	1.00	0.16	steel	FSD 14040-1
DSCS005-E160	0.64	1.25	0.16	steel	FSD 14040-2



These serrated washers are heat treated Rockwell C 40-44 and black oxidized.

DSCY Series Links (dimensions in inches)

DSC Part No.	A	B length	Thickness	Material	Other part numbers
DSCY001-E250	2.50	3.38	0.25	steel	WG-8357-51
DSCY002-E250	3.00	3.88	0.25	steel	WG-8357-52
DSCY003-E250	1.88	2.75	0.25	steel	WG-8357-53
DSCY004-E250	2.75	3.62	0.25	steel	WG-8357-54
DSCY005-E250	2.38	3.25	0.25	steel	WG-8357-55
DSCY006-E250	3.88	4.75	0.25	steel	WG-8357-56
DSCY007-E250	3.25	4.12	0.25	steel	WG-8357-57
DSCY008-E250	2.12	3.00	0.25	steel	WG-8357-58



Douglas Stamping Company (248) 542-3940 FAX (248) 542-6342

<http://dougstampco.com> sales@dougstampco.com